

Must See:

The English Manor exterior elevation of this home is a feature unique to the Fischer Homes style of design and building.

- **Luxurious master suite** that occupies half of the second floor — included features to this getaway are an elevated sleeping area, large sitting area with fireplace, and a lavish bathroom with 6-foot soaking tub to create a true spa experience.
- **Professional grade kitchen appliances** and other gourmet features take meal preparation and everyday living to a new level.
- **Gorgeous windows** are found throughout the home and highlight the outdoor scenery that makes the setting special — unique arched windows, over-sized picture windows, and transoms in many rooms.
- The moment you walk through the front door, you will feel welcome in the formal living and dining areas. With the extra trim detail, **hardwood floors throughout**, and the two-story entry, it's a warm and welcoming home.



\$589,000

**4 bedrooms,
3 1/2 baths**

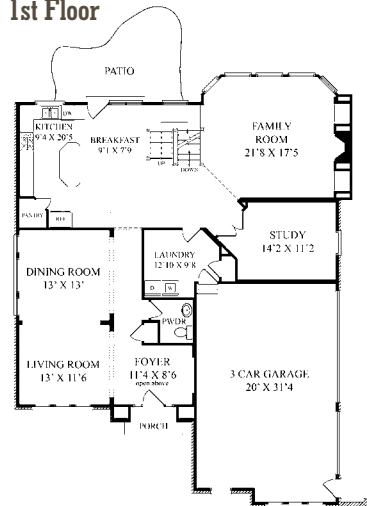
3-car garage

**Square footage:
3,826**

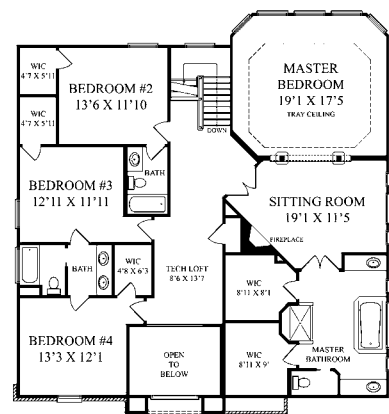
About the Builder:

A newcomer to the Columbus market, Fischer Homes has been in business since 1980 building single family, condominium, town and patio homes in northern Kentucky, southwest Ohio and Indiana. From a few communities in the 1980s, to expanded product offerings and geography in the 1990s, Fischer has built over 15,000 homes. A 2008 acquisition of Centex Homes allowed for expansion to central Ohio. Fischer has always measured their success by the ability to satisfy customers and provide sound financial results.

1st Floor



2nd Floor



Sales Contact

Jon Jasper
614-823-6800
www.fischerhomes.com

Interior Designer

Touch of Class
859-283-0077

Architect / Home Design

Fischer Homes
859-344-5981

Landscaper

Fischer Homes
859-344-3105

Color Palettes: Lots of warm tones with accent walls along with unique wall paper treatments.



Baguette
SW6123



Kaffe
SW6104



Antique White
SW6119