

## Must See:

The open and flowing floor plan of this home is perfect for casual or formal entertaining and just as comfortable for family gatherings.

- A grand and **dramatic entry** welcomes visitors with a custom 8-foot door, side lights and an arched transom.
- The **gourmet kitchen** includes professional-grade appliances, rich hardwood floors, beautiful cabinetry and a dinette area with a bay window wall and accent seat.
- The luxurious **first-floor owner's retreat** includes a spa-like bath with a multi-jet shower, Jacuzzi and a custom organized closet system.
- The two-story great room has a beautiful wooded view, and a gorgeous **floor-to-ceiling fireplace** flanked by cabinetry and arched bookcases.
- An elaborate deck steps down to the private patio that includes a water feature, "**door yard garden**" and a fire pit.



\$599,000

4 bedrooms,  
3 1/2 baths

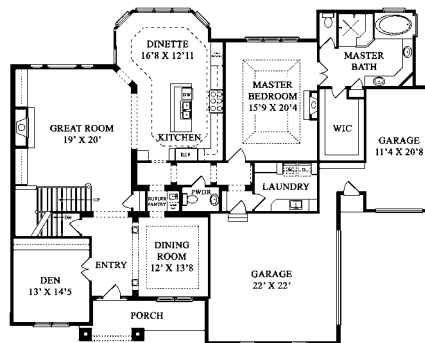
3-car garage

Square Footage:  
3,562

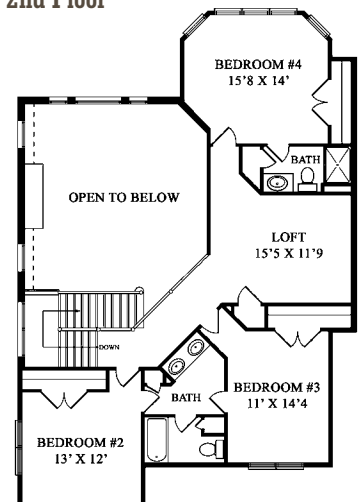
## About the Builder:

Manor Homes has been building in central Ohio since 1989 and is proud to be the developer of the Village at Hannah Farms as well as host of this year's BIA Parade of Homes. A customer-first philosophy and devotion to excellence have always been the cornerstones of their business. Manor takes pride in building award-winning homes backed by an outstanding warranty program — homes that look magnificent while providing structural soundness and confidence to every homeowner.

### 1st Floor



### 2nd Floor



#### Sales Contact

James Roof  
614-793-1700  
www.manorhomes.biz

#### Interior Designer

InStyle Interiors  
614-402-4525

#### Architect / Home Design

Building Service & Associates  
614-841-9460

#### Landscaper

Eastside Nursery  
614-836-9800

#### Color Palettes:

Silver grey walls and cream ceilings are accented with sea blue, aloe green, and shades of brown



5783



803



5425