

## Must See:

The wine cellar built under the suspended garage floor is an outstanding feature to this property.

- **Unique floor plan** property with angled walls, two fireplaces, large windows and hardwood floors throughout the first level.
- The incredible views of the wooded lot behind the home will be enjoyed from an outside **entertaining area**, including a spacious deck leading out from the first floor breakfast area. A lower-level patio opens up more space for additional entertaining space.
- The home's open and grand feel is accentuated by **raised ceilings** throughout the main floor and a two-story great room.
- The **gourmet kitchen** has all the latest features including, stainless-steel appliances, a double oven, a walk-in pantry and granite countertops.
- A beautiful **guest suite** will welcome any guest to the home with lots of privacy and spacious bath.



**\$679,000**

**4 bedrooms,  
4 1/2 baths**

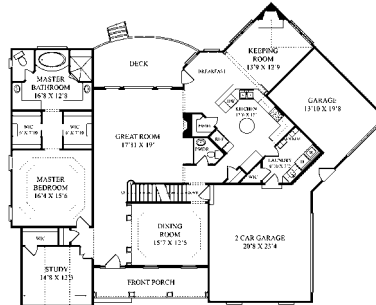
**3-car garage**

**Square footage:  
4,236**

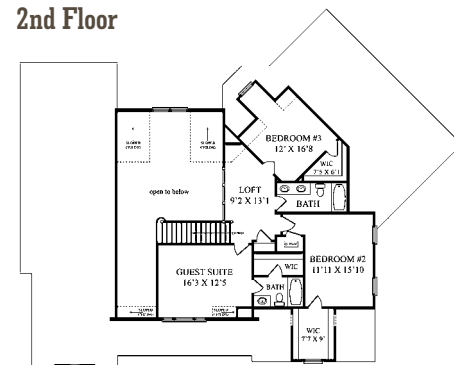
### About the Builder:

Key Homes has maintained a solid presence in central Ohio since 1972. In that time the company has enjoyed a well-earned reputation for uncompromising quality, careful attention to detail and unwavering loyalty to the concept of creating real value for the customer. Key Homes is currently building in Pataskala and Pickerington with prices ranging from \$200,000-\$350,000.

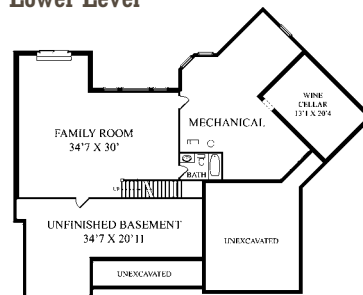
#### 1st Floor



#### 2nd Floor



#### Lower Level



#### Sales Contact

Jennifer Smith  
740-927-8383  
www.keyhomesohio.com

#### Interior Designer

Andreas Furniture  
330-852-2494

#### Architect / Home Design

Keiser Design Group  
614-864-9999

#### Landscaper

Albyn's Landscape and Nursery  
740-763-3359

#### Color Palettes:

These are the primary colors. There are nine other colors that will be used in this home.



**Connected Gray**  
SW6165



**Mannered Gold**  
SW6130



**Restrained Gold**  
SW6129