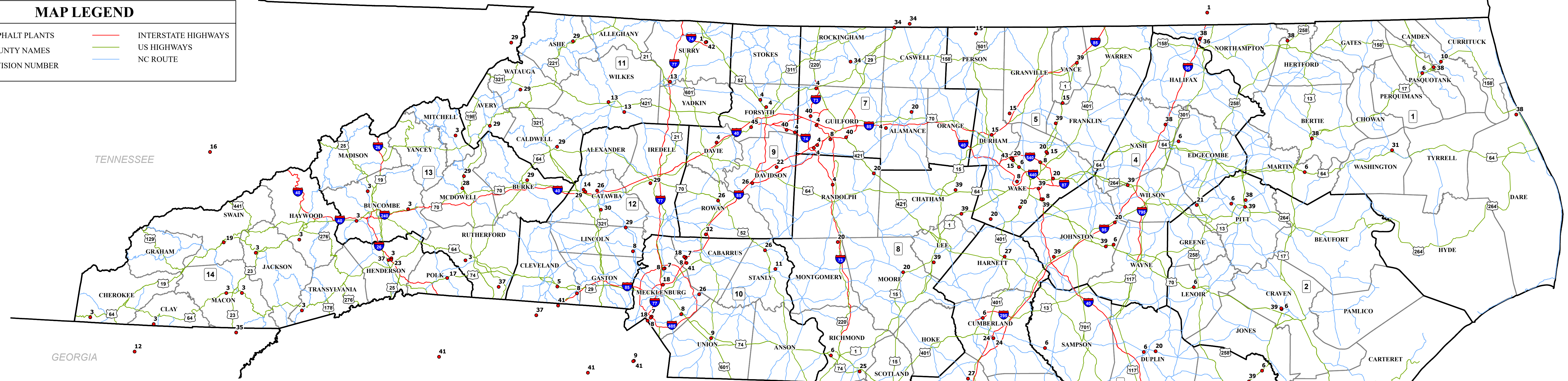


NC PRIMARY ROUTES

MAP LEGEND

●	ASPHALT PLANTS	—	INTERSTATE HIGHWAYS
9	COUNTY NAMES	—	US HIGHWAYS
	DIVISION NUMBER	—	NC ROUTE

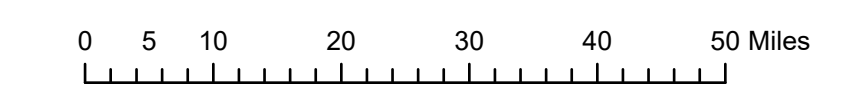


NCDOT CERTIFIED ASPHALT PLANTS

Map Key	Producer	# of Plants
1	Adams Construction Co.	4
2	Allan Myers	1
3	APAC - Harrison	13
4	APAC-Atlantic - Thompson-Arthur	10
5	Asphalt Paving Of Shelby, Inc.	1
6	Barnhill Contracting Company	15
7	Blythe Brothers Asphalt Co.	3
8	Blythe Construction, Inc.	10
9	Boggs Materials, Inc.	4
10	C & L Concrete Works, Inc.	1
11	C.K. Earnhardt & Son, Inc.	1
12	C.W. Matthews Contracting Co., Inc.	2
13	Carl Rose & Sons, Inc.	3
14	Carolina Paving of Hickory, Inc.	1
15	Carolina Sunrock LLC	6

Map Key	Producer	# of Plants
16	Charles Blalock & Sons, Inc.	1
17	D & S Asphalt Materials, Inc.	1
18	Ferebee Asphalt Corp.	3
19	Fortner Contracting Inc. (FCI)	1
20	Fred Smith Company	11
21	Garris Grading & Paving	1
22	Hanes Construction Co.	1
23	HHM Management	1
24	Highland Paving	3
25	Hudson Paving Co.	1
26	J.T. Russell & Sons, Inc.	5
27	Johnson Brothers Utility & Paving	2
28	Johnson Paving Co.	1
29	Maymead Materials, Inc.	10
30	Midstate Contractors	1

Map Key	Producer	# of Plants
31	NCDOT - Division 1 Plant	1
32	NJR Group, Inc.	1
33	Onslow Grading & Paving, Inc.	1
34	Piedmont Asphalt, LLC	5
35	Pittman Construction Co.	2
36	Rightmyer Machine Rentals, Inc.	1
37	Rogers Group, Inc.	3
38	Rose Brothers Paving Co.	7
39	S.T. Wooten Corp.	14
40	Sharpe Bros. Paving - Div. of Vecellio & Grogan	3
41	Sloan Construction Co.	5
42	Sowers Construction Company, Inc.	1
43	T. R. Vernal	1
44	Virginia Paving Company	1
45	Yadkin Valley Paving Co.	1



North Carolina Department of Transportation
Operations Program Management Unit
Transportation Asset Analytics

Information Current as of 12/31/2020

Suppliers more than 25 miles outside of the state are not shown on this map, but can be viewed by visiting our GO!NC website then searching for suppliers:

ncdot.maps.arcgis.com/home