

Intro to AI for Nursing Home Leaders

Josh Bowman, MHA, HFA, CNHA



Fall Conference
September 9-10, 2025

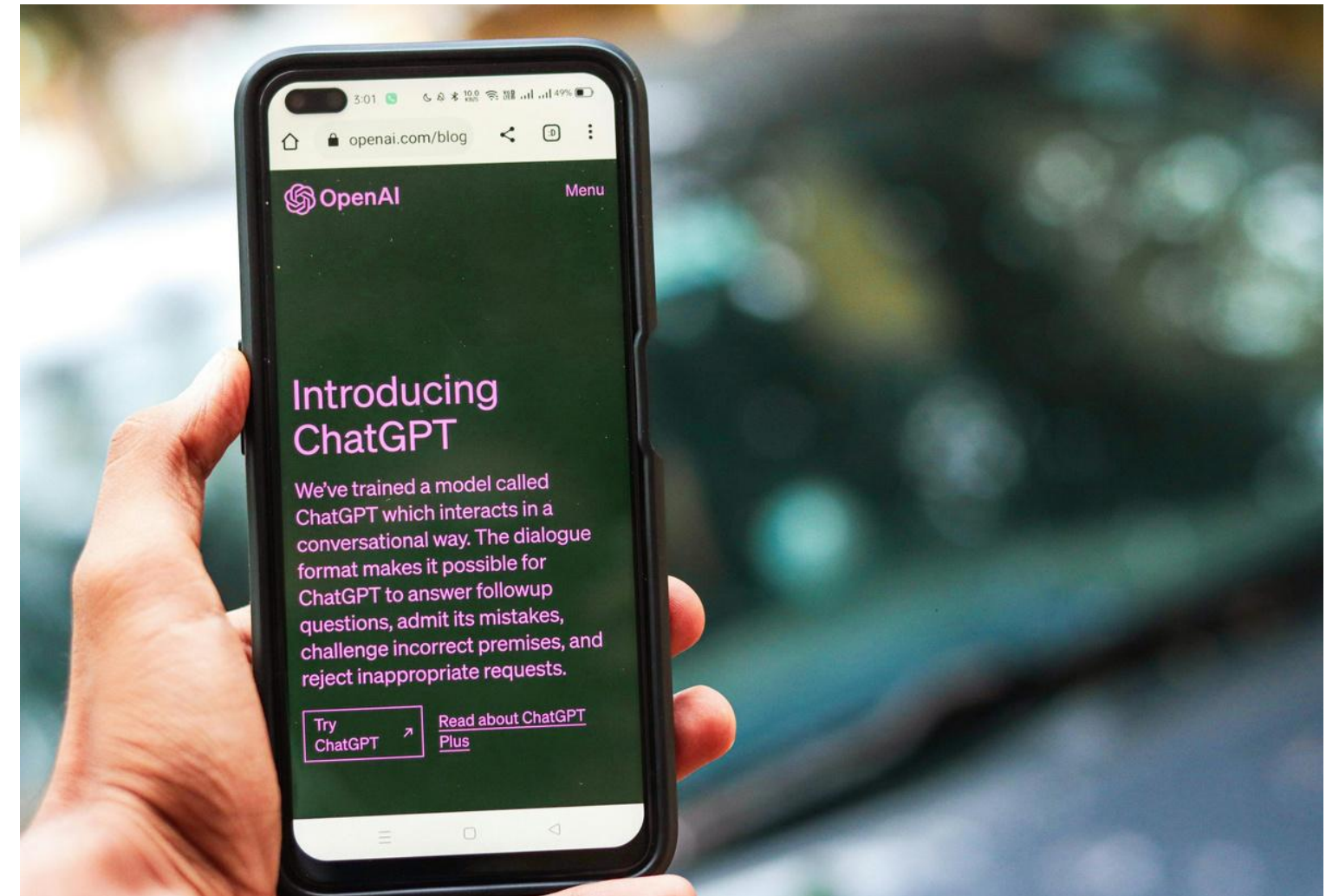
Embassy Suites Noblesville | Indianapolis, IN

How I Use AI and ChatGPT

- Jokes & comedy
- Vacation & Travel planning
- Homework help
- Foster/adoption guidance
- Home repairs & troubleshooting
- Recipes, meal ideas, cooking tips
- Outfit/shoe selection
- Questions about anything

What AI Really Is?

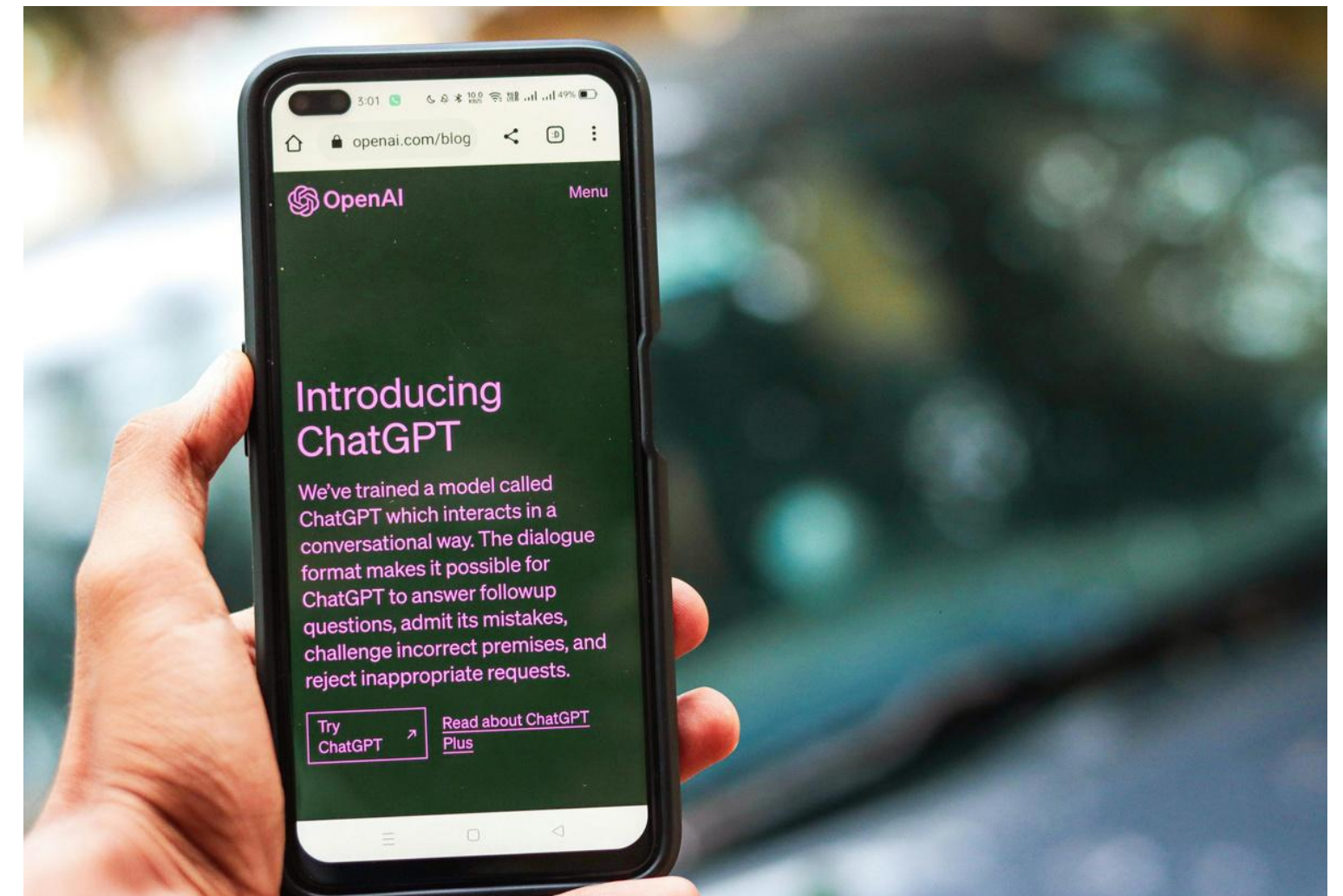
- Think of it as a very fast assistant.
- A tool trained on massive amounts of text.
- It generates text, summarizes, answers questions, and ideas.
- It isn't perfect and it works best when given clear, detailed instructions (prompts).



Bottom Line: Not magic - just a powerful assistant you control.

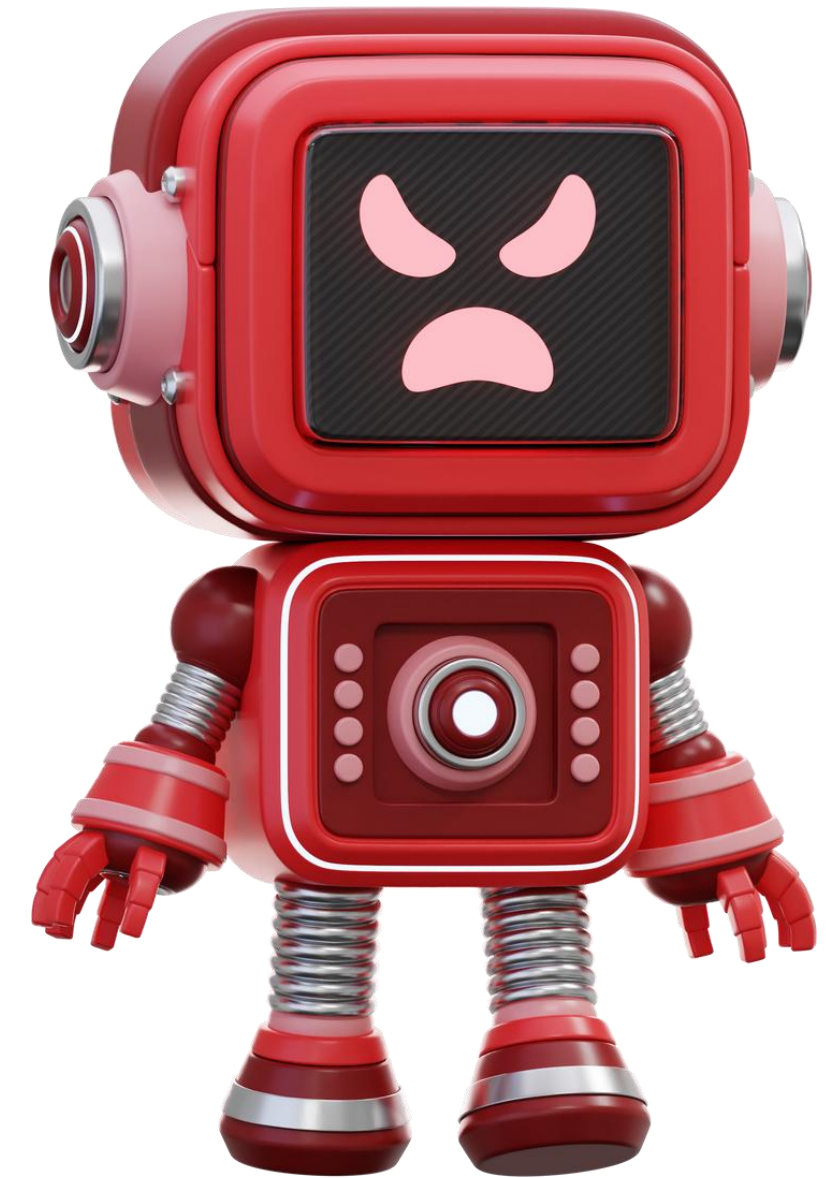
ChatGPT vs. Custom GPTs

- **ChatGPT defined:** an artificial intelligence system that uses large language model technology to generate human-like text. It engages in interactive dialogue, provides information, and assists with tasks such as writing, analysis, and problem-solving.
- **Default ChatGPT:** general-purpose assistant
- **CustomGPT** - tailored/specialized version of ChatGPT that is customized with specific instructions, data, and tools



Guardrails & Ground Rules

- ✓ Great for drafts/templates
- ✓ Verify before sharing
- ✗ No PHI / employee names
- ✗ Don't copy-paste blindly



Top Categories for LTC Leaders

Regulatory & Compliance

POCs, care plans, survey prep

Operations & HR

Job postings, memos, budgets

Education & Training

In-services, onboarding, quizzes

Families & Community

Letters, newsletters, social media

Creativity & Ideas

*Activities, marketing,
brainstorming*

Regulatory & Compliance

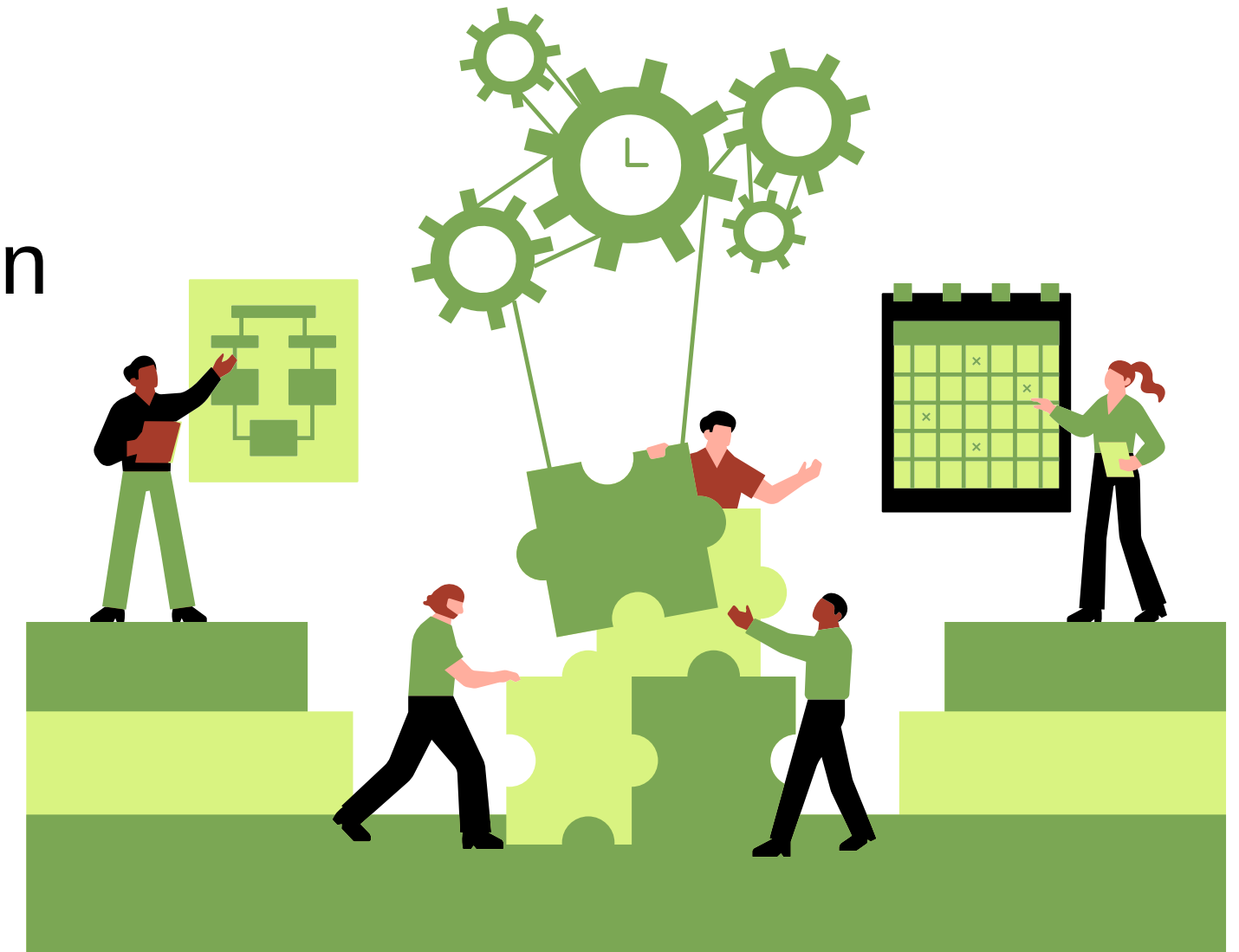
- Drafting Plan of Correction
- Care plan interventions ideas
- Policy writing, reviews, and updates
- Regulatory questions and situational analysis



Bottom line: Like having a regs expert in your back pocket.

Operations & HR

- Job postings & job descriptions
- Interview questions
- Business planning and strategy formulation
- Recruitment and retention plans
- Reviewing contracts
- Document version comparisons



Bottom line: Cuts through the busywork so you can focus on people.

Education & Training

- In-services with quizzes
- Skills checklists
- Staff education handouts
- Emergency Preparedness Drills



Bottom line: Instant in-services, less stress for you.

Families & Community

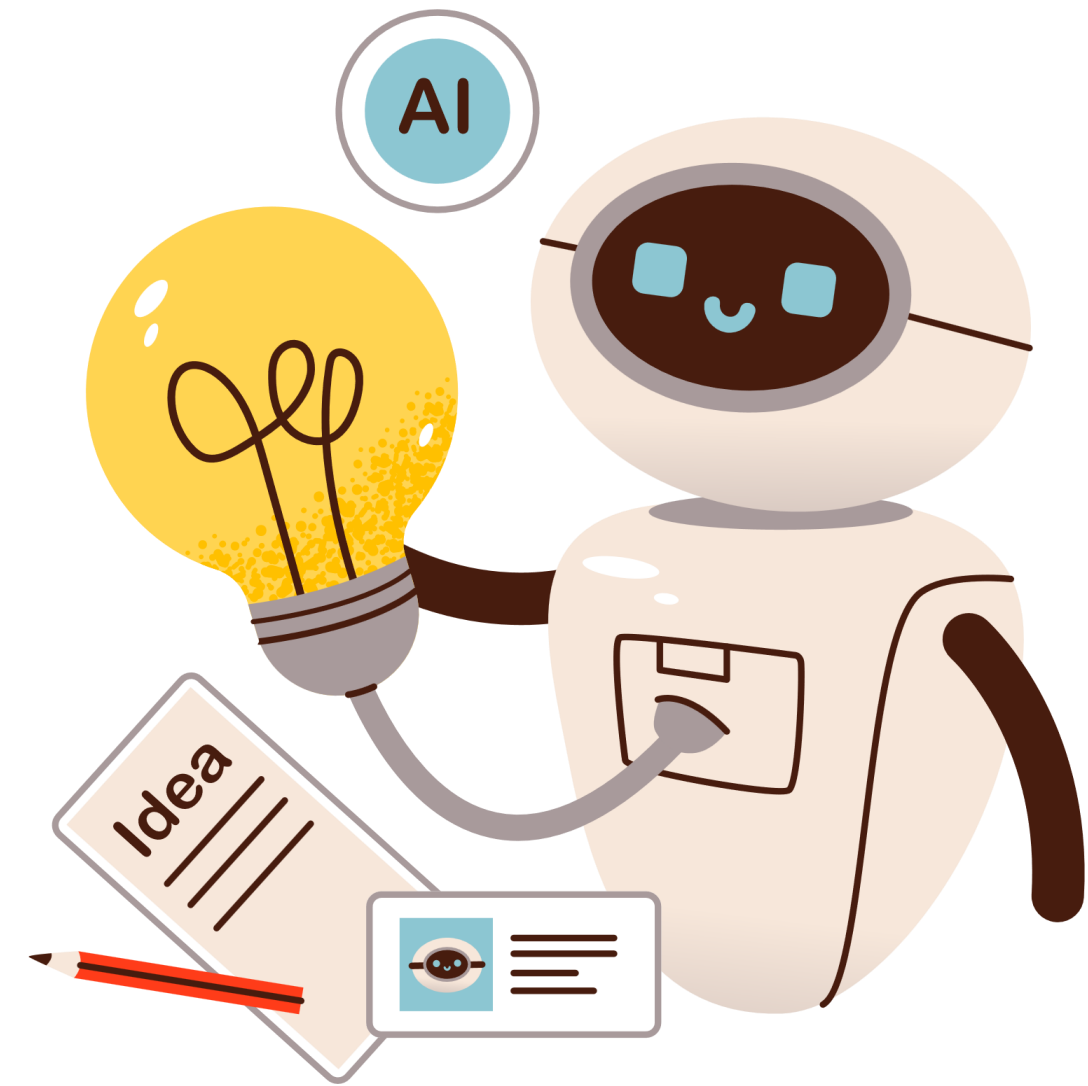
- Letters & newsletters
- Social media posts
- Holiday or event invites
- Marketing plans



Bottom line: Your 24/7 content creator for families and the community.

Creativity & Ideas






- Resident activity planning
- Marketing campaigns
- Problem-solving brainstorming
- Event themes & engagement



Bottom line: Fresh ideas on demand, no more “stuck.”

The Big Picture

AI Can Help Nursing Home Leaders With:

-  Regulatory & Compliance → POCs, policies, survey prep
-  Operations & HR → job postings, budgets, schedules
-  Education & Training → in-services, onboarding, quizzes
-  Families & Community → letters, newsletters, social media
-  Creativity & Ideas → activities, marketing, problem-solving

Bottom line: AI saves time, reduces stress, and frees you to focus on what matters.

Live Demo 1: General ChatGPT

- Create a policy
- Ask for activity ideas
- Marketing Ideas
- And more!



Live Demo 2: Create a Custom GPT (POC)

Let's create a simple CustomGPT



Live Demo 3: Trial a CustomGPT

- Write a plan of correction
- Develop an in-service
- Ask a regulatory question
- Anything else?



Prompting Basics

1. Be Specific

- Add details, context, and goals.

2. Break It Down

- Ask in steps, not walls of text.

3. Use Roles & Tone

- Tell it who to be and how to sound.

4. Ask for Options

- Request 2-3 versions to compare

5. Iterate, Don't Restart

- Keep refining



Advanced Prompting

- **Persona Simulation**
 - Ask to “act as” a surveyor, CNA, or family member.
- **Self-Critique Mode**
 - Let AI review its own draft for gaps or weaknesses.
- **Layered Output**
 - Ask for long-short, and bullet-point versions at once.
- **Scenario Testing**
 - Role-play tough survey or employee conversations.
- **Multi-Format**
 - Get a letter, memo, or social post from the same prompt.
- **Adapt Your Own Docs**
 - Feed in your own policies or POCs to adapt/update.

Q&A + Connect

Questions?

Start Small. Try one prompt this week.

If AI can plan my family road trip, it can help you survive survey week.