



Massachusetts Department of Public Health

BLUEPRINT IMPLEMENTATION

Status Updates

Office of Local and Regional Health

October 26, 2022

Sam Wong, Director of OLRH

Erica Piedade, Director of Workforce Development

Aimee Petrosky, Director of Performance Standards and Data Systems

Sarah Trager, Director of Stakeholder Engagement and Policy

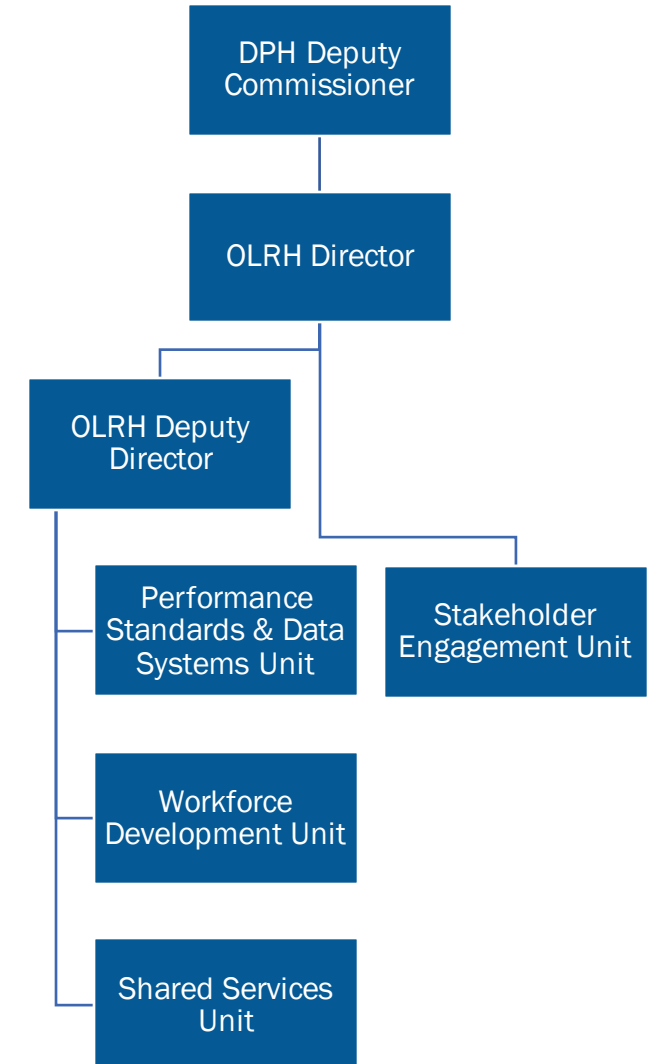
Agenda

- About the Office of Local and Regional Health (OLRH)
- Blueprint Recommendations Implementation Status Updates
 - Performance Standards
 - Data Systems
 - Workforce Development
 - Shared Services
 - Community & Partner Engagement
 - Resources
- Questions and Answers

About the Office of Local and Regional Health (OLRH)

What we do:

- We provide collaborative, statewide leadership for the Massachusetts local and regional public health systems.
- We work alongside local and regional public health (LRPH) to develop and provide the resources, tools, and support they need to promote and protect the health of their communities.
- We center our work on racial and health equity principles.
- We lead the implementation of the six interlocking recommendations made by the Special Commission on Local and Regional Public Health in their final report, The Blueprint for Public Health Excellence.



Blueprint for Public Health Excellence

The report documents the Commission's findings and makes recommendations for strengthening local public health services and protections across the Commonwealth.



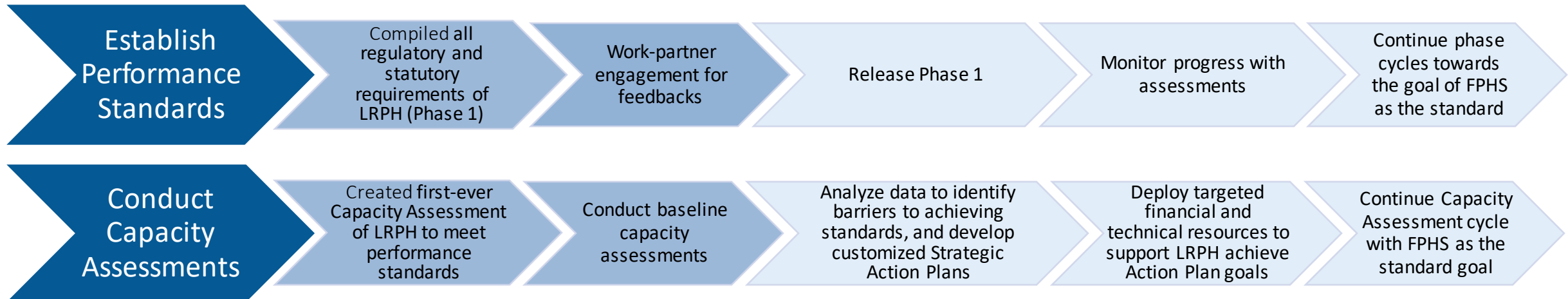
Performance Standards

Blueprint Recommendation

Elevate the standards for and improve the performance of local public health departments

Strategies for Implementation

- Assist cities and towns to meet existing statutory and regulatory requirements
- Evaluate timeline and phases of implementation of the Foundational Public Health Services as the minimum set of services that every Massachusetts resident can expect to receive



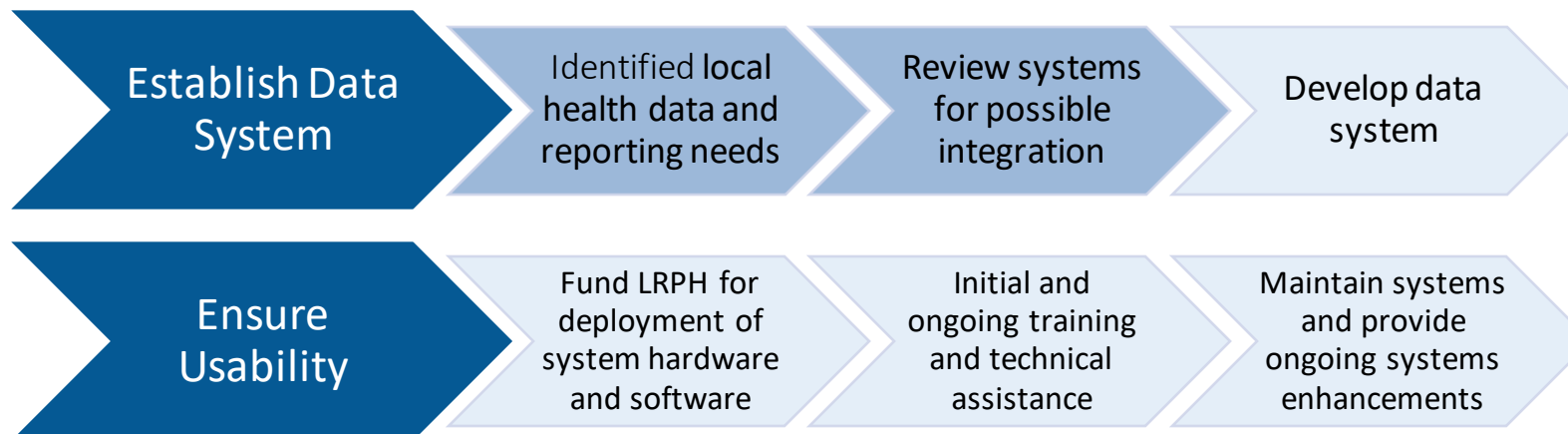
Data Systems

Blueprint Recommendation

Explore improvements to the current platforms to report, analyze, and interpret data

Strategies for Implementation

- Establish standardized, integrated, and unified public health reporting system
- Strengthen State and Local public health capacity to collect, analyze, and share data



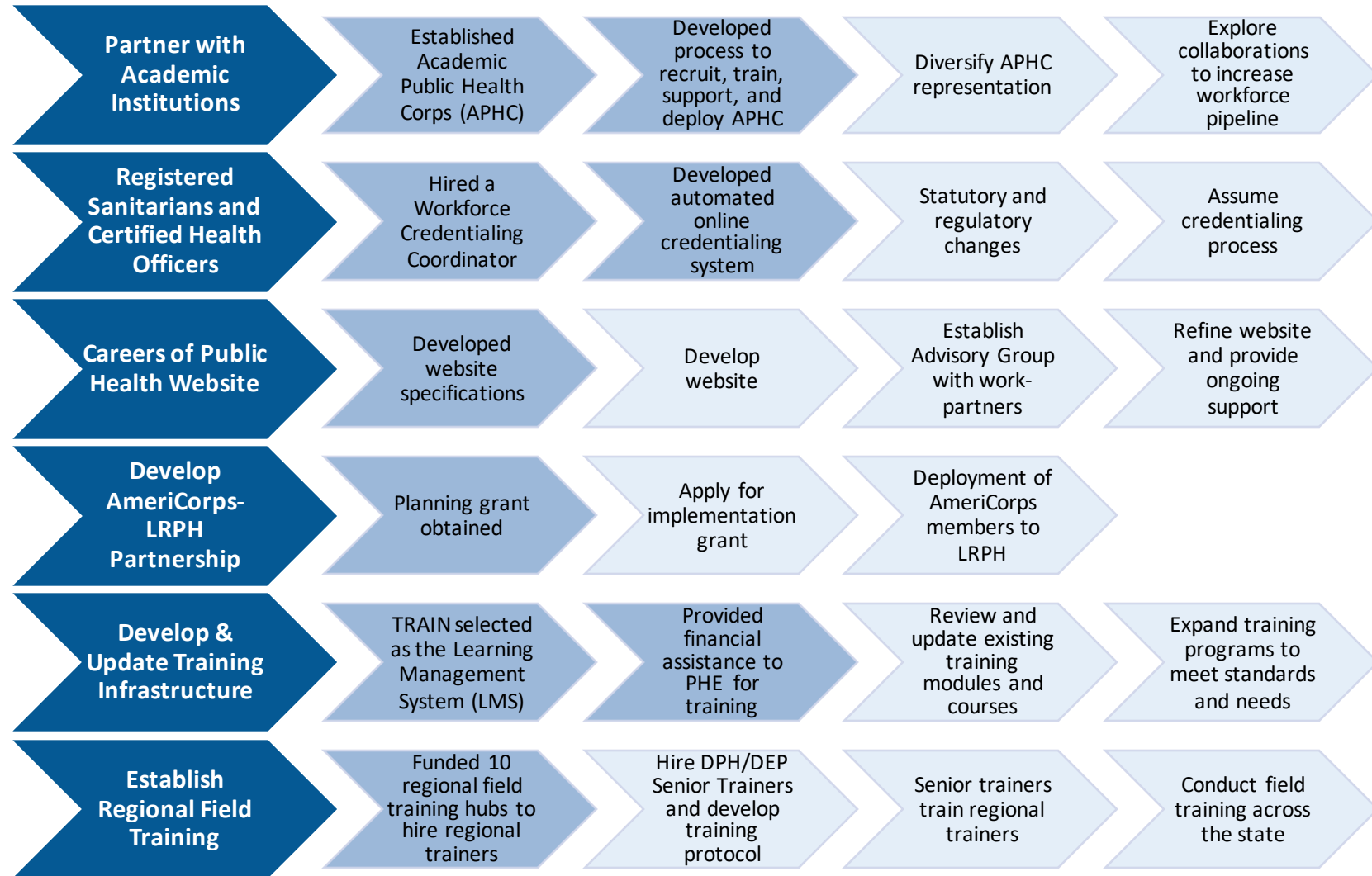
Workforce Development

Blueprint Recommendation

Set education and training standards for local public health officials and staff and expand access to professional development

Strategies for Implementation

- Promote workforce development for local and regional public health by enhancing the workforce pipeline, recruitment, and retention efforts
- Establish adequate training and educational opportunities for local and regional public health based on Blueprint standards



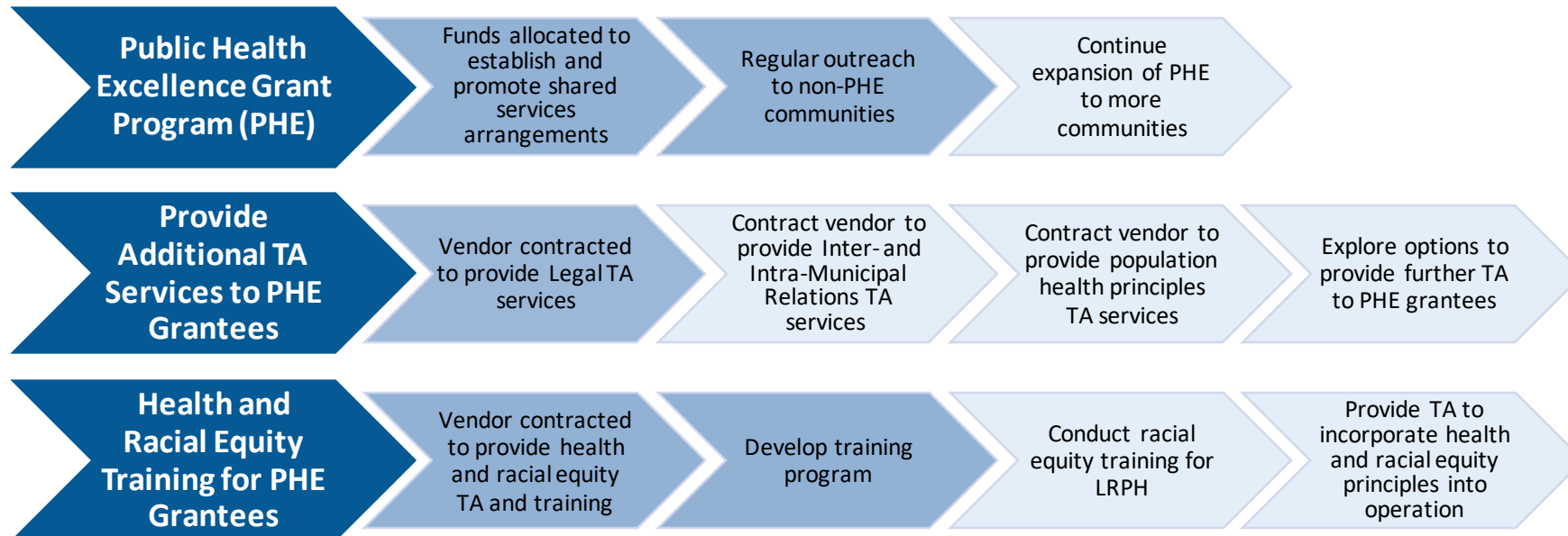
Shared Services

Blueprint Recommendation

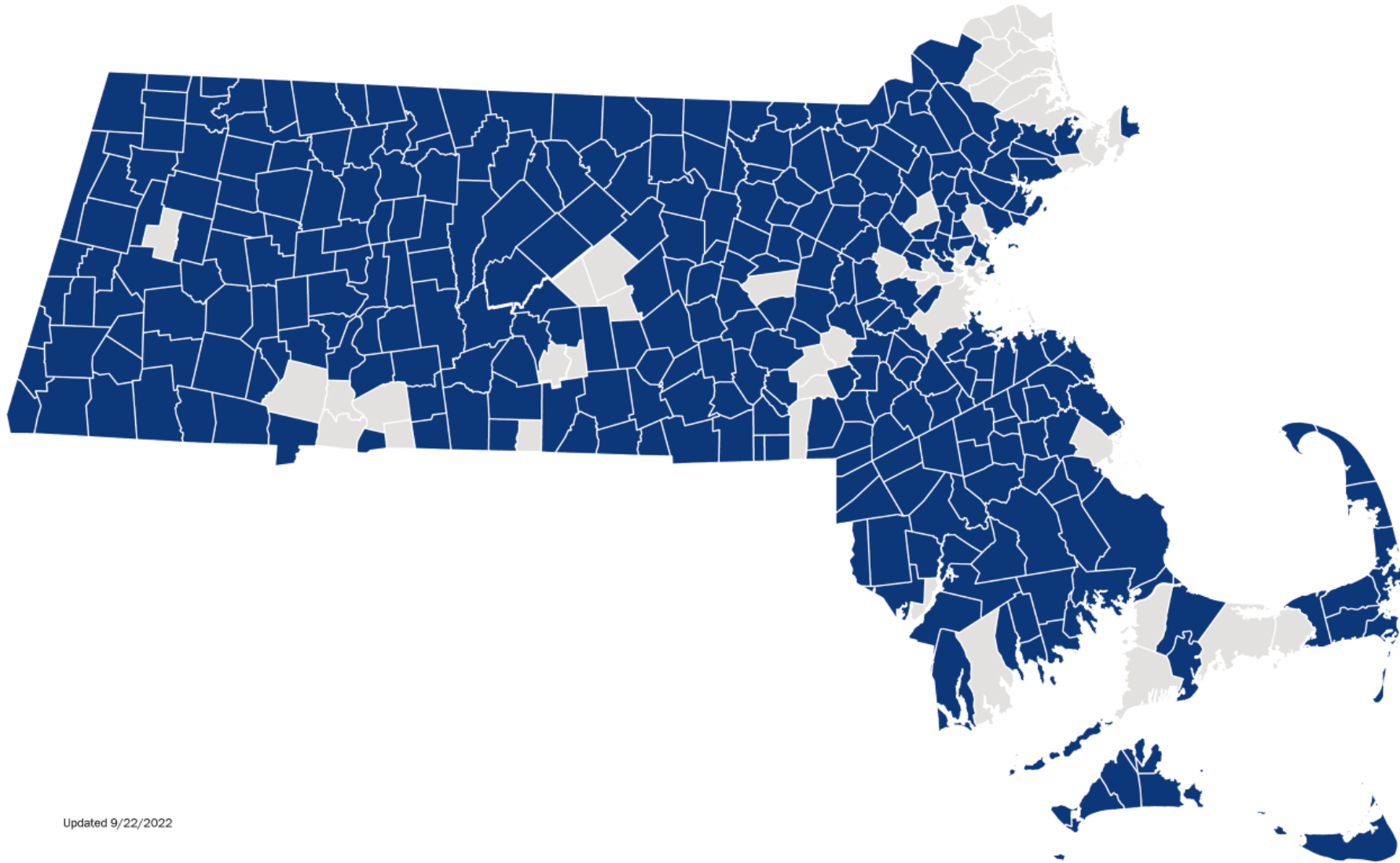
Increase cross-jurisdictional sharing of public health services to strengthen the service delivery capabilities of local and regional public health departments

Strategies for Implementation

- Establish infrastructure for cross-jurisdictional sharing of public health services to create the foundation for meeting current and future performance standards
- Support local and regional public health in addressing health disparities and improving population health



PHE Grant Program Municipality Map



Updated 9/22/2022

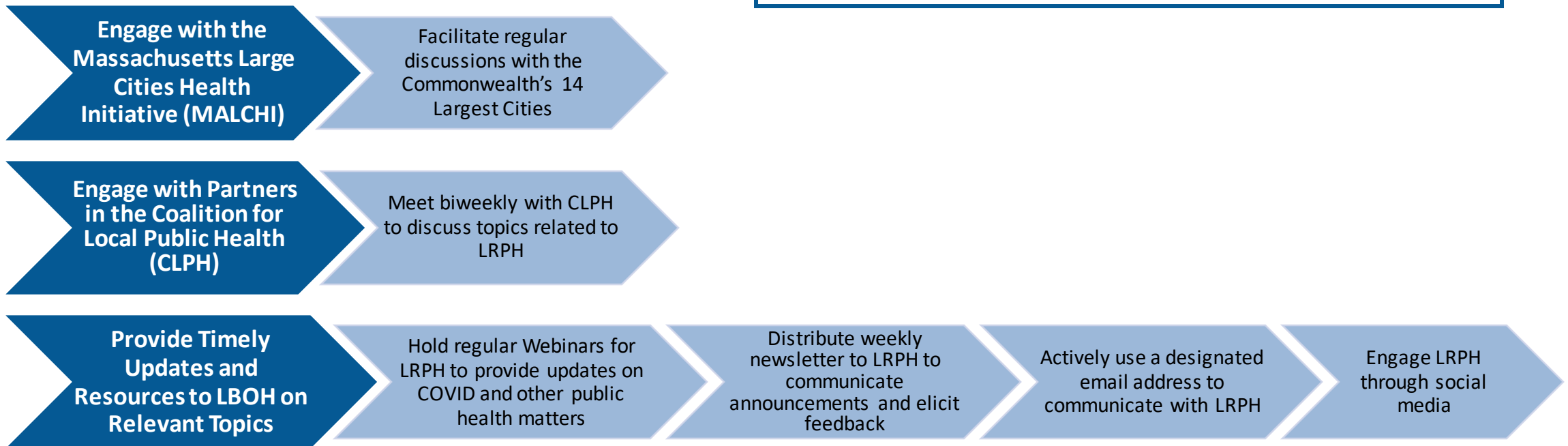
Community & Partner Engagement

Blueprint Recommendation

Ensure continuity of stakeholder engagement in the implementation of the Commission's recommendations

Strategies for Implementation

- Continue to engage the local and regional public health community and other partners to provide ongoing support implementation of the Commission's recommendations
- Further develop the infrastructure and to support local public health system improvement



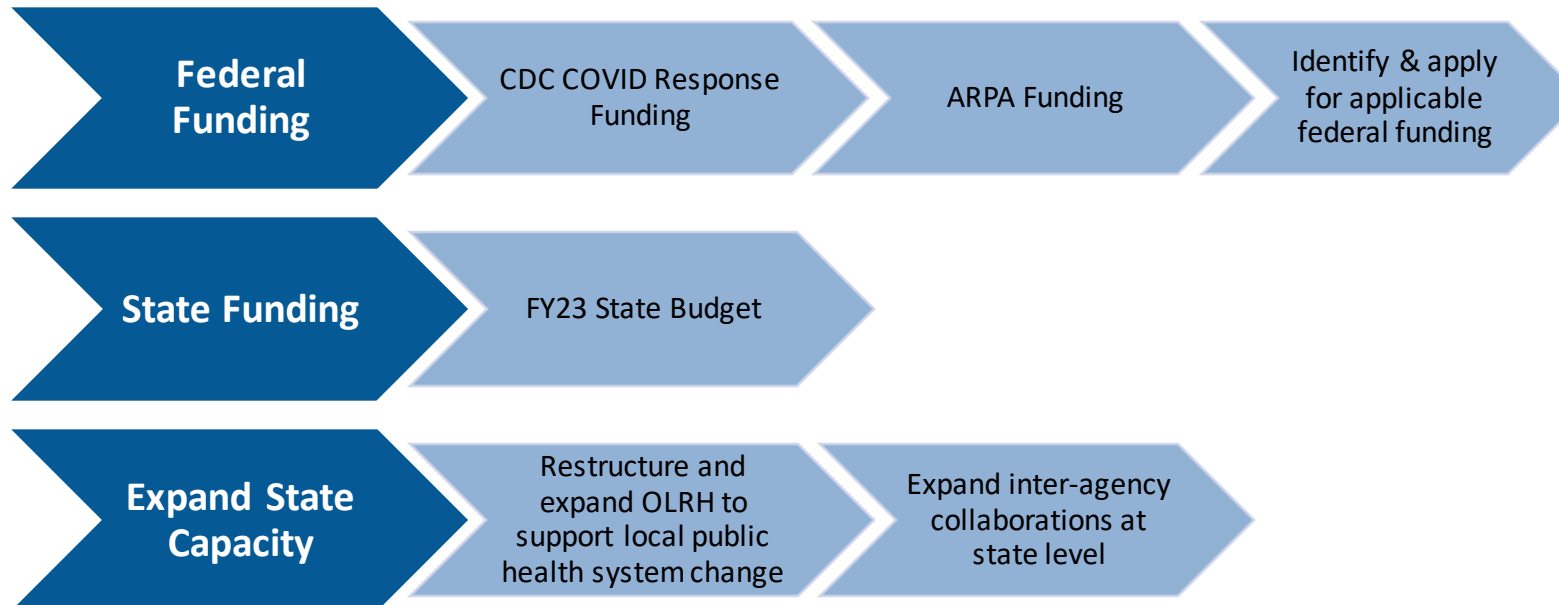
Resources

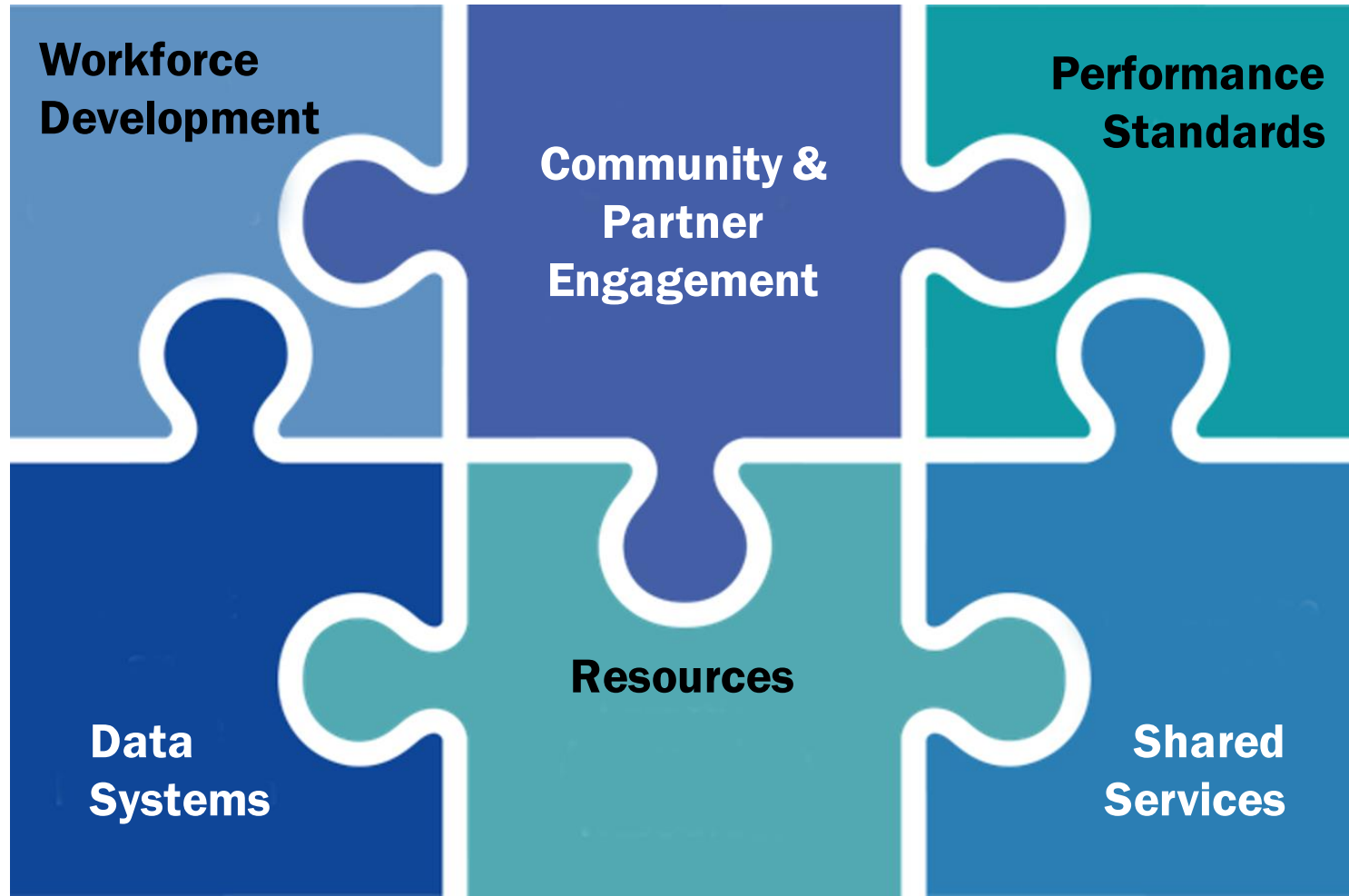
Blueprint Recommendation

Commit appropriate resources for the local public health system changes proposed by the Commission

Strategies for Implementation

- Identify and apply for applicable federal funding opportunities
- Facilitate appropriate distribution of resources to LRPH
- Expand State Capacity to support LRPH and implement Blueprint recommendations





Questions?



Connect with DPH



@MassDPH



Massachusetts Department of Public Health



mass.gov/dph

Samuel.S.Wong@mass.gov

Aimee.Petrosky@mass.gov

Erica.M.Piedade@mass.gov

Sarah.Trager@mass.gov