



Certified in Public Health “Credentialing Public Health Professionals”

CPH Certified in
Public Health
by National Board of Public Health Examiners



NBPHE Board Representation



Certified in Public Health



12,248

Examinees

95

countries with
CPH

11

Schools and
programs require
the CPH

**WHY SHOULD I GET
CERTIFIED?**

History

ASPH and APHA form task force on credentialing workforce

PROPOSED CREDENTIALING SYSTEM FOR PUBLIC HEALTH PROFESSIONALS: WHAT WOULD IT MEAN FOR SCHOOLS OF PUBLIC HEALTH?

Prepared for

The Association of Schools of Public Health

By

Eugenia S. Carpenter, M.P.P.

Gini Associates
P.O. Box 1884
Ann Arbor, MI 48106
April 16, 1990

It's Time We Became a Profession

During their annual joint breakfast meeting last fall, the executive committees of the Association of Schools of Public Health (ASPH) and the American Public Health Association (APHA) agreed that the public health workforce, and public health as an important societal endeavor, suffer from lack of definition, appreciation, and visibility. Despite the fact that public health can take credit for 80% of increased longevity and health, the story is simply not known: investments in public health have declined from a minuscule 3% of US health spending to a microscopic 0.9%; local

health budgets and staff are being slashed and their responsibilities transferred elsewhere, often to managed care and other clinical/treatment enterprises; and the public health workforce is traditionally undervalued and underpaid.

While these are the long-term results of numerous factors, the executive committees agreed that one important factor, which we can change, is the absence of discernible, visible, organized professionalism. William Henry Welch, founding dean of the Johns Hopkins School of Hygiene and Public Health and arguably the most important

1980

2005

2008

2022

The Feasibility and Desirability of Public Health Credentialing: A Survey of Public Health Leaders

William C. Livingood, Jr., PhD, Lynn D. Woodhouse, EdD, and Steven W. Godin, PhD

The Public Health Workforce
Without a competent workforce, a public health agency is as useless as a new hospital with no health care workers.

by Kristine Gebbie, Jacqueline Merrill, and Hugh H. Tilson

ABSTRACT: Defining the public health workforce and specifying its performance requirements present equal challenges as the nation anticipates public health needs for the twenty-first century. The core group of professionals employed by government public health agencies works in close partnership with a wide range of public, private, and voluntary orga-

10,000+
Certified in
Public Health

Why Should I Get Certified in Public Health?

Stay

Stay current in best practices

Meet

Meet a national professional standard

Invest in

Invest in your career

Increase

Increase your potential for promotions and salary increases

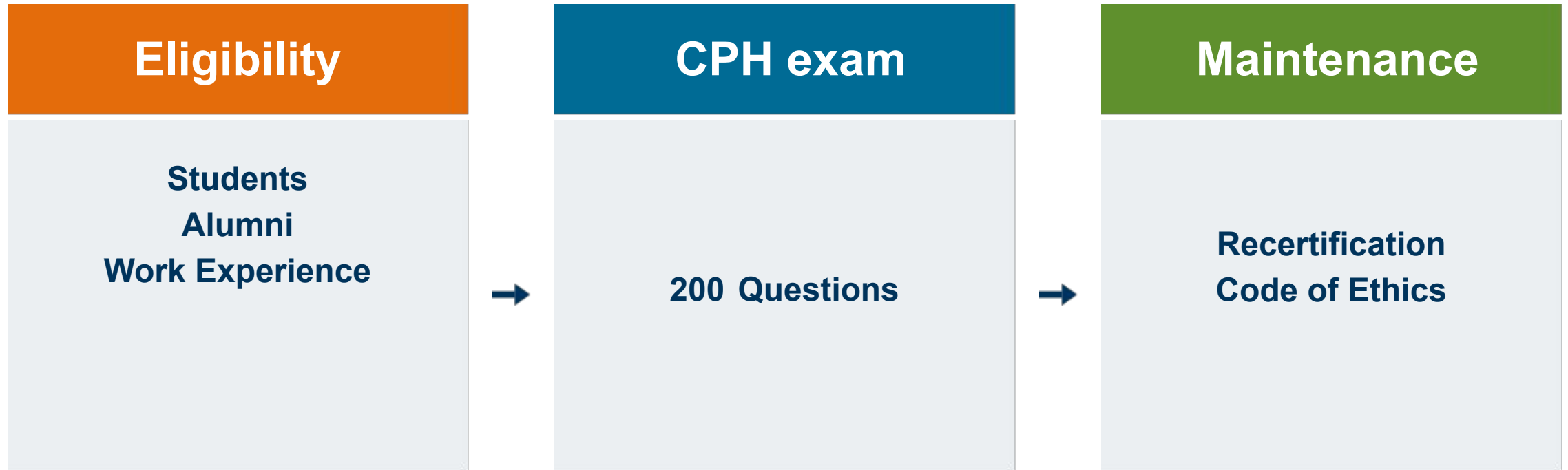
Distinguish

Distinguish yourself from your peers

Go

Go beyond your education

Certification Process



REGISTERING FOR THE CPH EXAM

Exam Eligibility

Alumni

Student

Workforce

Graduate students of CEPH-accredited and CEPH-applicant schools and programs of public health

All graduates of CEPH-accredited and CEPH-applicant schools and programs of public health

Exam Eligibility

Alumni

Student

Workforce

Minimum of THREE years of public health experience and graduate-level related-degree or CEPH-accredited certificate program

OR

Minimum of FIVE years of public health experience and at least a bachelor's degree



Credentialing Public Health Leaders

The Certified in Public Health is the mark of a public health professional. Demonstrate your knowledge of key public health sciences and join the ranks of public health leaders by sitting for and successfully passing the CPH exam. Distinguish yourself from your peers by showing employers that you can meet and maintain a national standard in public health through continuing education focused on emerging and established public health issues.

**Be the public health professional that the public needs.
Be CPH certified.**

[Why Get Certified? »](#)



Registration Is Open



New CPH Discounts



CPH Credential Webinar



All verified candidates approved within two weeks



Scheduling instructions sent immediately after approval



Exam can be scheduled as soon as 72 hours later

No scheduling or testing deadline. Your eligibility is indefinite

Prices and Discounts

Standard Fee

\$385

Discounts



Organization	Discount Rate
Alaska Native Tribal Health Consortium	\$315
American Public Health Association (and Affiliates) Members	\$315
Arizona Public Health Association	\$315
Army Nurse Corps	\$315
Army Public Health Center	\$315
ASPPH Fellows	Varies
Association of Public Health Nurses	\$250
Brigham Young University MPH Program	\$250
California State University Northridge MPH Program in Community Health Education	\$315
Claremont Graduate University Master of Public Health Program	\$315

Testing All Year Long





Computer-Based Testing Centers

**1400 Testing Centers
(Monday-Saturday)**



Live-Online Proctor

**24 hours/day
365 days/year**



Scoring

Instant scoring!

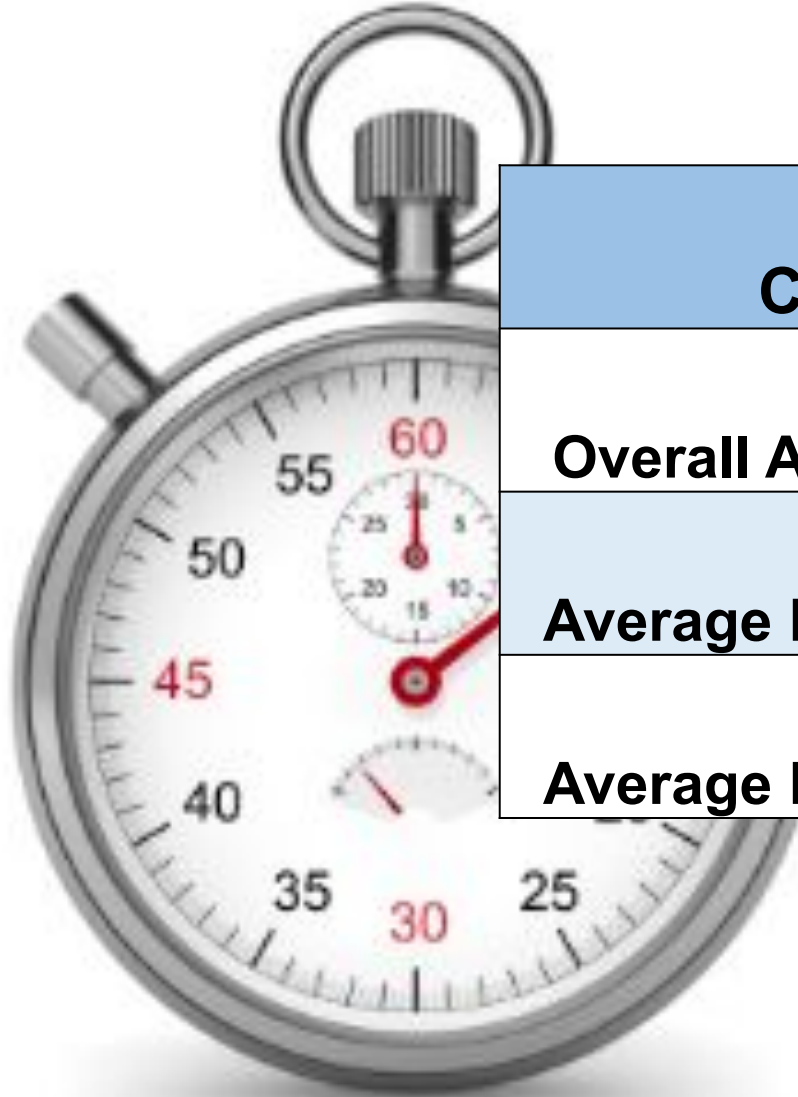
CPH Exam



The CPH exam is a 4-hour exam with 200 questions

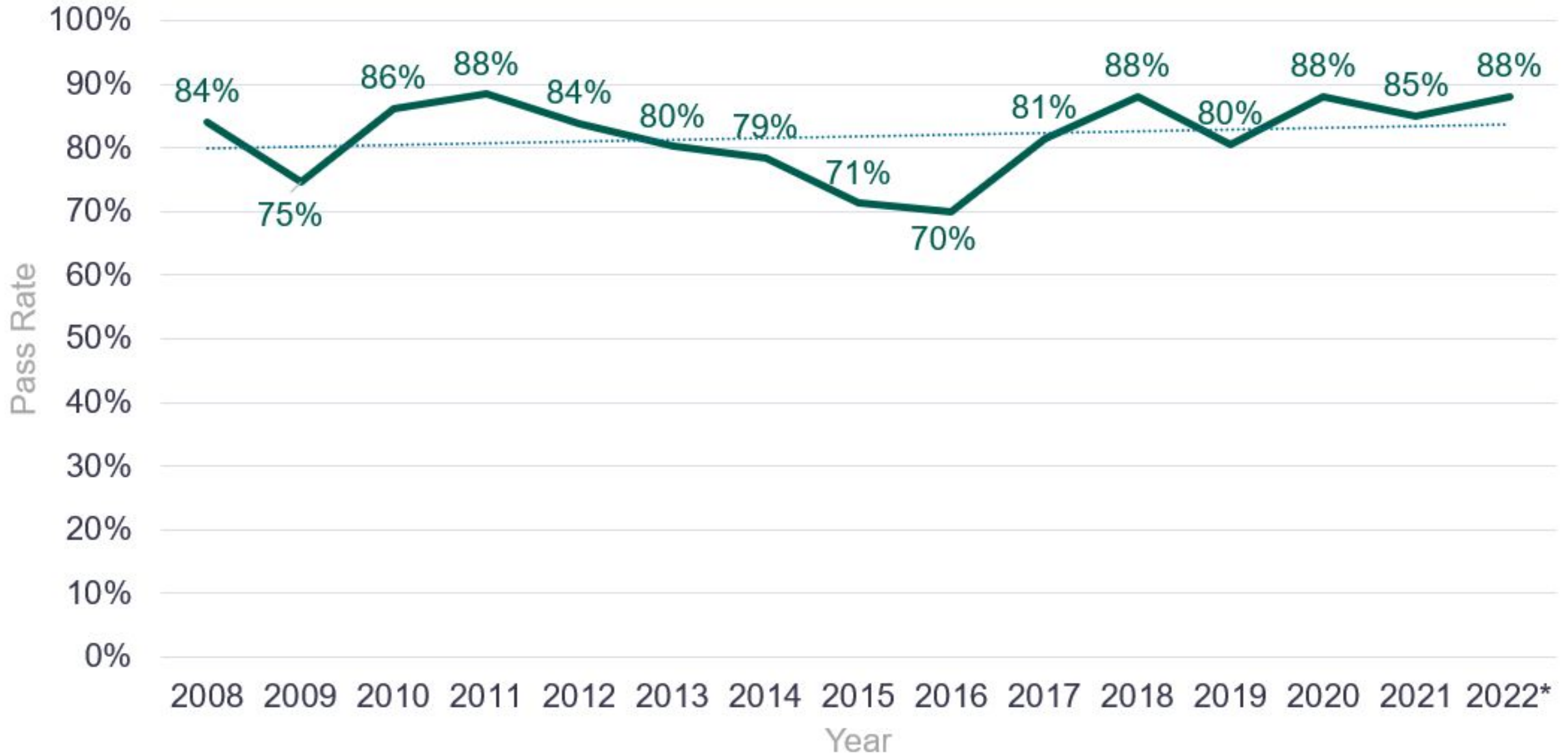
All questions are multiple choice and single-best answer

Average Exam Time (4 hour window)



CATEGORY	AVERAGE EXAM TIME
Overall Average Exam Time	2 hours 50 minutes
Average Exam Time for LOP	2 hours 48 minutes
Average Exam Time for CBT	2 hours 52 minutes

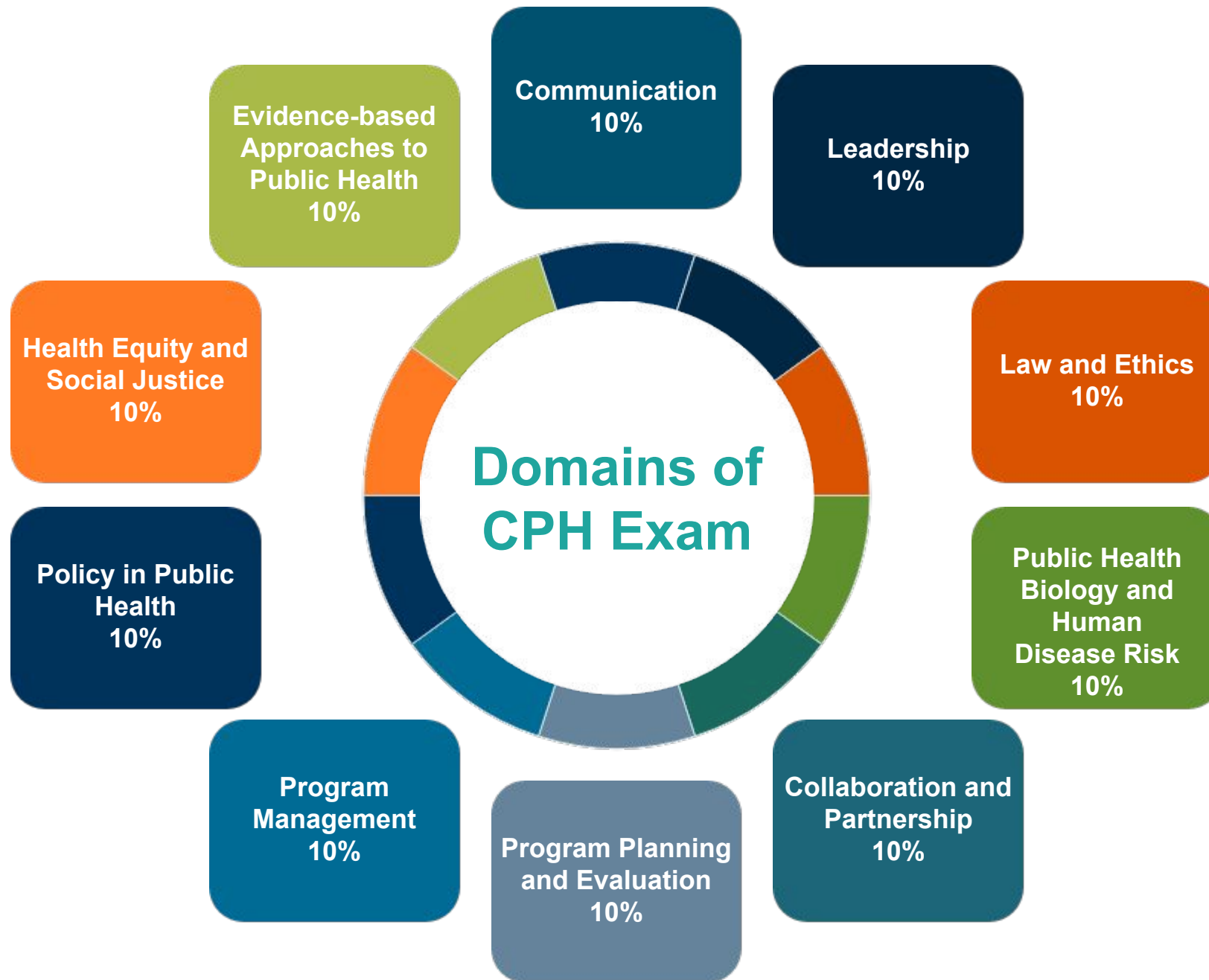
CPH Passing Rate (2008-2022)



Retaking the Exam



- **No limit on how often candidates can retest**
- **\$150 for each attempt**



Passing Score



Passing is based on overall scores, not each domain

No penalty for guessing. You are better off answering

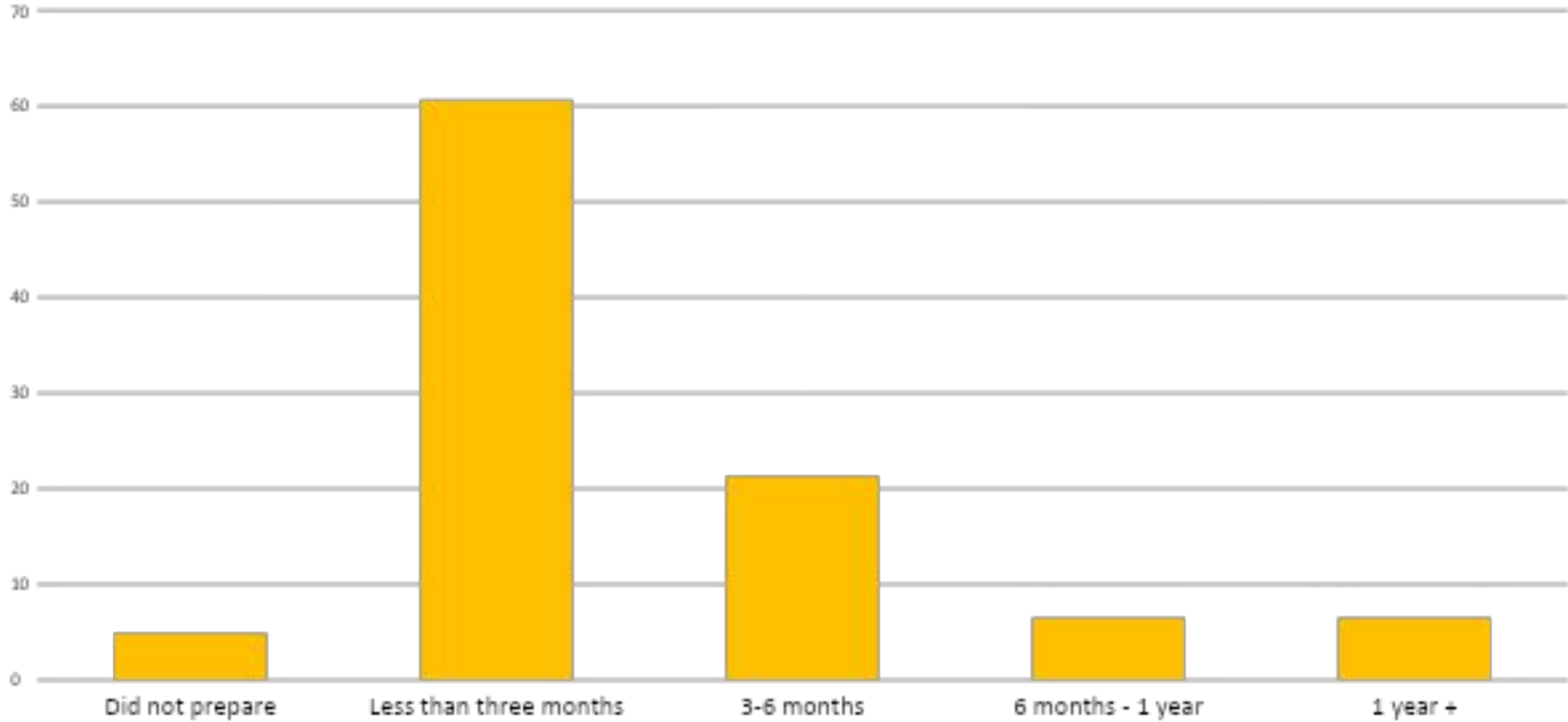
8

CPH Study Resources

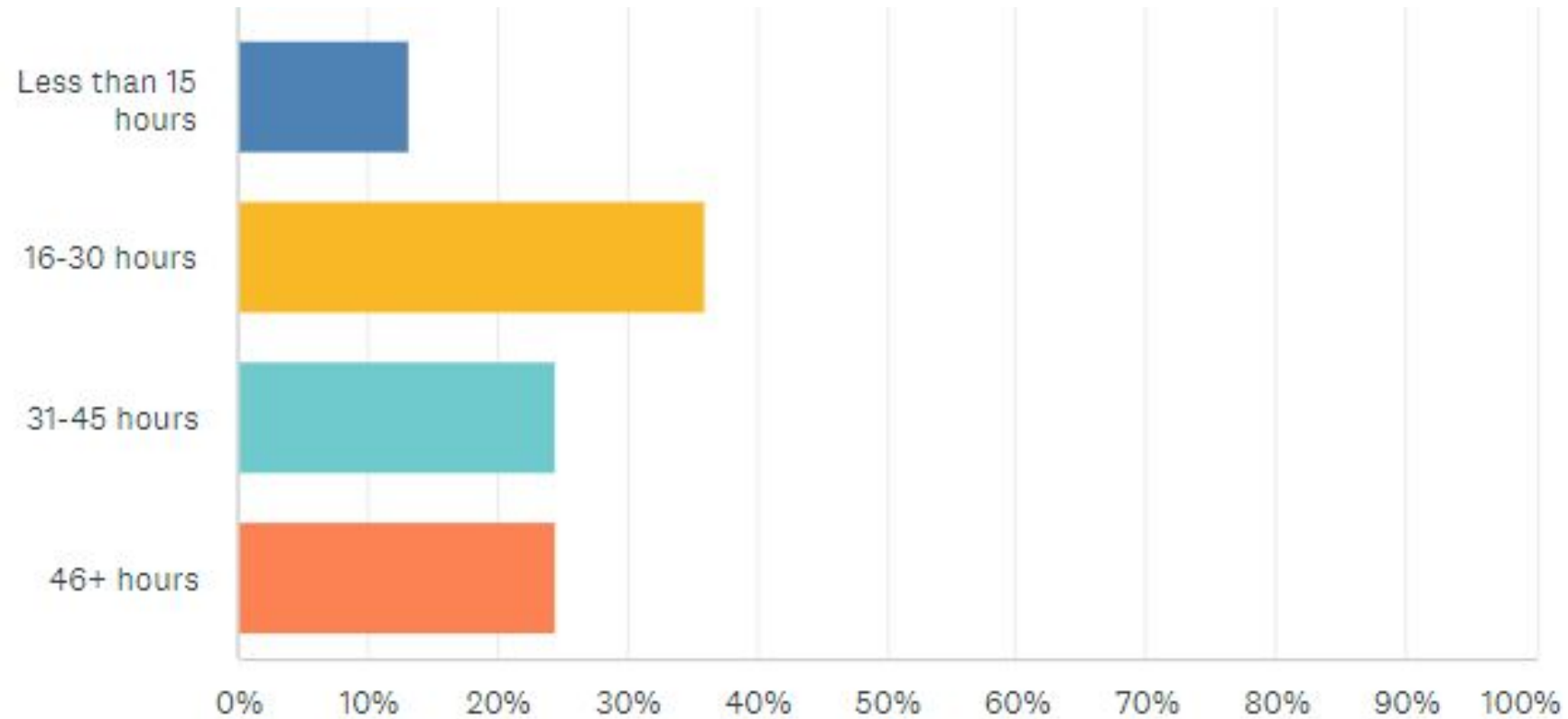
1. Content Outline
2. Sample Exam Questions
3. Practice Exams
4. ASPPH Webinars
5. ASPPH Study Guide
6. APHA Study Guide
7. Springer Exam Review
8. In-person reviews



When did you start to prepare for the CPH exam?



How many hours did you prepare for the CPH exam?





CPH Study Resources

Use the following resources to prepare for the CPH exam. Print this [CPH Study Checklist](#) keep track of your progress.



SELF-ASSESSMENT

Complete your self-assessment to discover which domain areas are your strongest and which you may need to focus on a bit more.

[Content Outline](#)

[Sample Exam Questions](#)

[Practice Exam](#)



PREPARE

After completing your self-assessment, utilize these resources to study for the exam.

DISCLAIMER:

These prep materials are developed independently from the National Board of Public Health Examiners. They may not represent the exact content on the CPH exam. They are intended to be used as reinforcement for what you have already learned. These materials are not required, endorsed, recommended, or approved by the National Board of Public Health Examiners.

CPH RECERTIFICATION PROCESS

Bi-Annual Recertification Process (CEs)

50

CPH recert credits

\$95

every two years

**Online
reporting
portal**

Recertification Activities Include:

Webinars and Workshops

Conferences and Professional Events

Instruction and Professional Contributions

Volunteer and Leadership Service

CPH Item-Writer/PHAB or CEPH Accreditation Site Visits

Medical Residencies

Work in Direct Response to COVID-19

No pre-approved provider process



Questions?

Contact info@nbphe.org

CPH Certified in
Public Health

by National Board of Public Health Examiners

