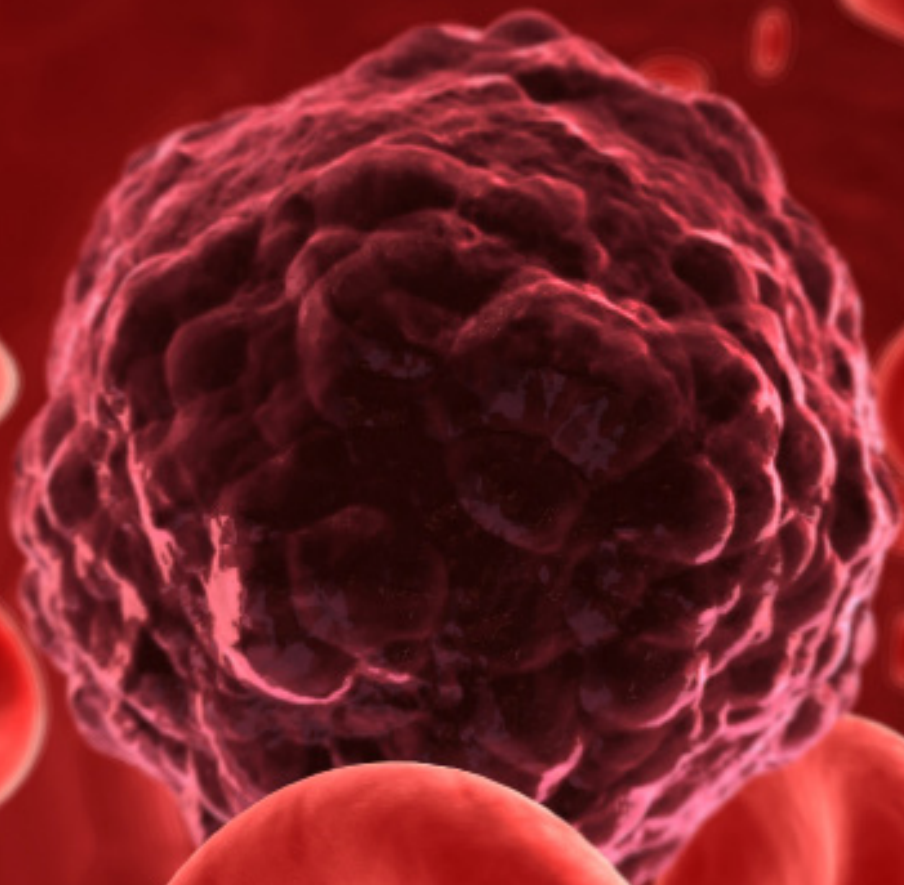




*INTERPRETING CLINICAL DATA:
UPDATE IN HEMATOLOGY*

HIGHLIGHTS FROM ASH 2016



SATURDAY, JANUARY 28, 2017

The Dearborn Inn - Dearborn, MI

AGENDA

7:00am - 8:00am	Registration and Continental Breakfast	
8:00am - 8:10am	Welcome	Samuel Silver, M.D., Ph.D, MACP, FASCO
8:10am - 8:40am	Chronic Myeloid Leukemia and Myeloproliferative Neoplasms	Charles Schiffer, M.D. <i>Barbara Ann Karmanos Cancer Institute</i>
8:40am - 9:10am	Benign Hematology and Hemoglobinopathies	Philip Kuriakose, M.D. <i>Henry Ford Health System</i>
9:10am - 9:40am	Pediatric Hematology	Kelly Walkovich, M.D. <i>University of Michigan</i>
9:40am - 10:10am	Bleeding Disorders.	Jordan Shavit, M.D. <i>University of Michigan</i>
10:10am - 10:30am	BREAK	
10:30am - 11:00am	Myelodysplastic Disorders	Patrick Burke, M.D. <i>University of Michigan</i>
11:00am - 11:30am	Acute Leukemias	Jay Yang, M.D. <i>Barbara Ann Karmanos Cancer Institute</i>
11:30am - 11:50am	OBTAIN LUNCH	
11:50am - 12:20pm	Lymphoma	Radhakrishnan Ramchandren, M.D. <i>Barbara Ann Karmanos Cancer Institute</i>
12:20pm - 12:50pm	Thrombosis and Hypercoagulable States	Suman Sood, M.D. <i>University of Michigan</i>
12:50pm - 1:20pm	Bone Marrow Transplant	John Magenau, M.D. <i>University of Michigan</i>
1:20pm - 1:50pm	Plasma Cell Dyscrasias	Craig Cole, M.D. <i>University of Michigan</i>
1:50pm - 2:10pm	Chronic Lymphocytic Leukemia	Sami Malek, M.D. <i>University of Michigan</i>
2:10pm	ADJOURN	

FACULTY

Patrick Burke, M.D.

Clinical Lecturer in Internal Medicine
Division of Hematology/Oncology
University of Michigan

Craig Cole, M.D.

Clinical Assistant Professor
Division of Hematology/Oncology
University of Michigan

Philip Kuriakose, M.D.

Assistant Professor
Division of Hematology/Oncology
Wayne State University School of Medicine
Henry Ford Health System

John Magenau, M.D.

Assistant Professor of Internal Medicine
Division of Hematology - Oncology
University of Michigan

Sami Malek, M.D.

Associate Professor
Division of Hematology/Oncology
Department of Internal Medicine
University of Michigan

Radhakrishnan Ramchandren, M.D.

Assistant Professor
Division of Hematology/Oncology
Barbara Ann Karmanos Cancer Institute
Wayne State University School of Medicine

Charles Schiffer, M.D.

Professor of Medicine and Oncology
Lead, Malignant Hematology
Multidisciplinary Team
Department of Oncology
Barbara Ann Karmanos Cancer Institute
Wayne State University School of Medicine

Jordan Shavit, M.D.

Assistant Professor
Pediatric and Communicable Diseases
Division of Hematology/Oncology
University of Michigan

Suman Sood, M.D.

Assistant Professor
Division of Hematology/Oncology
Department of Internal Medicine
University of Michigan

Kelly Walkovich, M.D.

Assistant Professor of Pediatrics and
Communicable Diseases
Division of Pediatric Hematology/Oncology
University of Michigan

Jay Yang, M.D.

Assistant Professor
Division of Hematology/Oncology
Department of Oncology
Barbara Ann Karmanos Cancer Institute
Wayne State University School of Medicine

PLANNING COMMITTEE

Samuel Silver, M.D., PhD, MACP, FASCO

Course Director
Assistant Dean for Research
Professor, Division of Hematology/Oncology
Department of Internal Medicine
University of Michigan

Richard Champlin, M.D.

CME Program Chair
Professor, Stem Cell Transplantation and
Cellular Therapy
The University of Texas
MD Anderson Cancer Center

Jerome Seid, M.D.

President
Michigan Society of Hematology & Oncology
St. John Hospital and Medical Center
Great Lakes Cancer Management Specialist

Jerome Winegarden, M.D.

Education Committee Member
Michigan Society of Hematology & Oncology
IHA Hematology Oncology Consultants

Mary Kay Makarewicz

Director of Programs and Operations
Michigan Society of Hematology & Oncology

Kristi J. English, CHCP

Program Manager
CME/Conference Management
The University of Texas
MD Anderson Cancer Center

REGISTRATION

REGISTRATION DEADLINE: January 16, 2017

Registration must be received by this deadline to be guaranteed a syllabus.

	Register before January 16	Register after January 16
Physicians	\$125.00	\$175.00
Retirees, Nurses, Advanced Practice Practitioners, Aligned Healthcare Professionals	\$50.00	\$100.00
Students	\$25.00	\$75.00
Fellows, Residents	No Fee	\$50.00

** Please note there will be no refunds issued for registrations cancelled after January 16.*

REGISTRATION OPTIONS:

ONLINE: www.msho.org

Credit Cards accepted

BY MAIL: Make checks payable to MSHO Foundation
(Checks Only) 5435 Corporate Dr., Ste. 250
Troy, MI 48098

By Fax: 248-712-6857

For more
information, please
contact MSHO
at 248-385-5464 or
info@msho.org.

PERSONAL INFORMATION (PLEASE PRINT)

Name _____ Credentials _____

Institution/Clinic/Practice _____

Specialty _____

Address _____

City _____ State _____ Zip _____

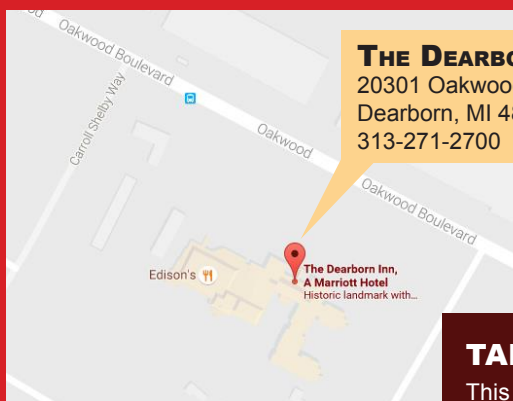
Phone _____ Email _____

I am a: ☐ M.D. ☐ NP / PA ☐ Fellow
☐ D.O. ☐ Nurse ☐ Student
☐ Other _____

Are you staying for lunch?

☐ Yes ☐ No

Special Dietary Needs:



THE DEARBORN INN

20301 Oakwood
Dearborn, MI 48124
313-271-2700

MSHO has reserved a block of overnight rooms for Friday, January 27. Mention MSHOs ASH Update to receive the group rate.

TARGET AUDIENCE

This program is directed toward hematologists, medical oncologists, pathologists with both clinical and non clinical responsibilities in community, hospital, and academic settings, and hematology/oncology fellows, physician extenders, pharmacists, oncology nurses, and others delivering care to cancer patients

ACCREDITATION/CREDIT DESIGNATION

This activity has been planned and implemented in accordance with the accreditation requirements and policies of the Accreditation Council for Continuing Medical Education (ACCME) through the joint providership of The University of Texas MD Anderson Cancer Center and the Michigan Society of Hematology and Oncology. The University of Texas MD Anderson Cancer Center is accredited by the ACCME to provide continuing medical education for physicians.

The University of Texas MD Anderson Cancer Center designates this live activity for a maximum of 5.50 *AMA PRA Category 1 Credits™*. Physicians should claim only the credit commensurate with the extent of their participation in the activity.

THE UNIVERSITY OF TEXAS

MDAnderson Cancer Center

EDUCATIONAL OBJECTIVES

After participating in the activity, the participant should be able to:

- ❶ Apply advances and scientific and translational research in the care of their patients (*knowledge, competence, performance*)
- ❶ List and assimilate the difficulties in interpreting data presented at scientific meetings (*knowledge, competence*)
- ❶ Enhance physicians' ability to analyze speakers' conclusions at medical meetings. (*knowledge*)
- ❶ Implement new practices or review existing ones to improve the quality of care delivered based on knowledge gained at this symposium (*knowledge, competence, performance, patient outcomes*)

STATEMENT OF NEED

Hematology is a continuously evolving area of medicine and new developments provide tools for the physicians, scientists and health care professionals to help diagnose and treat cancer. Continuing education is essential to study and evaluate new findings, to inform practitioners of new clinical applications, and to improve patient care.