

NOW APPROVED

Avastin® (bevacizumab), solution for intravenous infusion, is now approved in combination with paclitaxel and cisplatin or paclitaxel and topotecan for the treatment of persistent, recurrent, or metastatic carcinoma of the cervix.¹

Avastin plus chemotherapy demonstrated statistically significant overall survival (OS) in the GOG 240 study.

- With a 16.8-month median OS (vs 12.9 months), Avastin plus chemotherapy* demonstrated a statistically significant increase in OS vs chemotherapy alone in the GOG 240 study (HR=0.74 [95% CI, 0.58-0.94], $P=0.0132$)¹

*Chemotherapy included either paclitaxel and cisplatin or paclitaxel and topotecan.

Select Codes for Your Reference¹⁻⁶

| | |
|--------------------|--|
| NDC | 50242-060-01 – 100 mg/4 mL single-use vial 50242-061-01 – 400 mg/16 mL single-use vial |
| ICD-9 Codes | 180.0 – Malignant neoplasm of the endocervix 180.1 – Malignant neoplasm of the exocervix 180.8 – Malignant neoplasm of other specified sites of cervix 180.9 – Malignant neoplasm of cervix uteri, unspecified site |
| CPT® Codes | 96413 – Chemotherapy administration, intravenous infusion technique; up to 1 hour, single or initial substance/drug 96415 – Chemotherapy administration, intravenous infusion technique; each additional hour (list separately in addition to code for primary procedure) 96417 – Chemotherapy administration, intravenous infusion technique; each additional sequential infusion (different substance/drug), up to 1 hour (list separately in addition to code for primary procedure) |
| HCPCS Code | J9035 – Injection, bevacizumab, 10 mg |

CPT, Current Procedural Terminology (CPT®); HCPCS, Healthcare Common Procedure Coding System; ICD-9, International Classification of Diseases, Ninth Revision, Clinical Modification; NDC, National Drug Code.

These codes are provided for informational purposes only. Correct coding is the responsibility of the provider submitting the claim for the item or service.

- Avastin Access Solutions® offers services to help you navigate the access and reimbursement process. Our dedicated, in-house specialists help bring patient treatment and practice solutions together
- Customers can access Avastin through authorized specialty pharmacies and freestanding infusion centers if a patient is covered by a commercial healthcare plan. To find out which specialty pharmacies may be available based on the patient's insurance, please contact Avastin Access Solutions at (888) 249-4918
- Avastin is available through an authorized network of specialty distributors and wholesalers via the Avastin distribution model. Please visit <http://www.Genentech-Access.com/Avastin> for more information on the network
- For more information, please contact your Field Reimbursement Manager or submit your inquiry at <http://www.gene.com/contact-us/email-us>

To speak live with one of our dedicated Specialists for patient access support, please call (888) 249-4918, 6 a.m.–5 p.m. PT, Monday through Friday. Or, visit Genentech-Access.com/Avastin for more information.

IMPORTANT SAFETY INFORMATION

Boxed WARNINGS

- **Gastrointestinal (GI) perforation**
 - Serious and sometimes fatal GI perforation occurs at a higher incidence in Avastin-treated patients compared to controls
 - The incidences of GI perforation ranged from 0.3% to 3.2% across clinical studies
 - Discontinue Avastin in patients with GI perforation
- **Surgery and wound healing complications**
 - The incidence of wound healing and surgical complications, including serious and fatal complications, is increased in Avastin-treated patients
 - Do not initiate Avastin for at least 28 days after surgery and until the surgical wound is fully healed. The appropriate interval between termination of Avastin and subsequent elective surgery required to reduce the risks of impaired wound healing/wound dehiscence has not been determined
 - Discontinue Avastin at least 28 days prior to elective surgery and in patients with wound healing complications requiring medical intervention
- **Hemorrhage**
 - Severe or fatal hemorrhage, including hemoptysis, GI bleeding, hematemeses, central nervous system hemorrhage, epistaxis, and vaginal bleeding, occurred up to 5-fold more frequently in patients receiving Avastin. Across indications, the incidence of grade ≥ 3 hemorrhagic events among patients receiving Avastin ranged from 0.4% to 6.9%
 - Do not administer Avastin to patients with serious hemorrhage or recent hemoptysis ($\geq 1/2$ tsp of red blood)
 - Discontinue Avastin in patients with serious hemorrhage (ie, requiring medical intervention)

Please see following page and accompanying Prescribing Information for additional important safety information.

IMPORTANT SAFETY INFORMATION (continued)

Additional serious adverse events

- Additional serious and sometimes fatal adverse events with increased incidence in the Avastin-treated arm vs control included
 - GI fistulae (up to 2%)
 - Non-GI fistulae ($\leq 1.8\%$)
 - Arterial thromboembolic events (grade ≥ 3 , 2.6%)
 - Proteinuria (nephrotic syndrome, $< 1\%$)
- Additional serious adverse events with increased incidence in the Avastin-treated arm vs control included
 - GI-vaginal fistulae occurred in 8.2% of patients in a cervical cancer trial
 - Venous thromboembolism (grade 3–4, up to 10.6%) in patients with persistent, recurrent, or metastatic cervical cancer treated with Avastin
 - Hypertension (grade 3–4, 5%–18%)
 - Posterior reversible encephalopathy syndrome (PRES) ($< 0.5\%$)
- Infusion reactions with the first dose of Avastin were uncommon ($< 3\%$), and severe reactions occurred in 0.2% of patients
- Inform females of reproductive potential of the risk of ovarian failure prior to starting treatment with Avastin

Most common adverse events

- Across indications, the most common adverse reactions observed in Avastin patients at a rate $> 10\%$ and at least twice the control arm rate were
 - Epistaxis
 - Taste alteration
 - Exfoliative dermatitis
 - Proteinuria
 - Back pain
 - Rhinitis
 - Lacrimation disorder
 - Hypertension
 - Rectal hemorrhage
 - Headache
 - Dry skin
- Across all studies, Avastin was discontinued in 8.4% to 21% of patients because of adverse reactions

Pregnancy warning

- Avastin may impair fertility
- Based on animal data, Avastin may cause fetal harm
- Advise patients of the potential risk to the fetus during and following Avastin and the need to continue adequate contraception for at least 6 months following the last dose of Avastin
- For nursing mothers, discontinue nursing or Avastin, taking into account the importance of Avastin to the mother

Indication-specific adverse events

- In CC, grade 3 or 4 adverse reactions in study GOG 240, occurring at a higher incidence ($\geq 2\%$) in 218 patients receiving chemotherapy plus Avastin compared to 222 patients receiving chemotherapy alone, were abdominal pain (11.9% vs 9.9%), diarrhea (5.5% vs 2.7%), anal fistula (3.7% vs 0%), proctalgia (2.8% vs 0%), urinary tract infection (8.3% vs 6.3%), cellulitis (3.2% vs 0.5%), fatigue (14.2% vs 9.9%), hypertension (11.5% vs 0.5%), thrombosis (8.3% vs 2.7%), hypokalemia (7.3% vs 4.5%), hyponatremia (3.7% vs 1.4%), dehydration (4.1% vs 0.5%), neutropenia (7.8% vs 4.1%), lymphopenia (6.0% vs 3.2%), back pain (5.5% vs 3.2%), and pelvic pain (5.5% vs 1.4%). There were no grade 5 adverse reactions occurring at a higher incidence ($\geq 2\%$) in patients receiving chemotherapy plus Avastin compared to patients receiving chemotherapy alone

You may report side effects to the FDA at (800) FDA-1088 or www.fda.gov/medwatch.

You may also report side effects to Genentech at (888) 835-2555.

Please see accompanying full Prescribing Information, including **Boxed WARNINGS**, for additional important safety information.

References: 1. Avastin® (bevacizumab) full prescribing information. Genentech, Inc., August 2014. 2. ICD9Data. Malignant neoplasm of cervix uteri. <http://www.icd9data.com/2014/Volume1/140-239/179-189/180/default.htm>. ICD9Data Website. Accessed August 7, 2014. 3. American Medical Association. <https://ocm.ama-assn.org/OCM/CPTRelativeValueSearchResults.do?locality=7&keyword=96413>. American Medical Association CodeManager Website. Accessed August 7, 2014. 4. American Medical Association. <https://ocm.ama-assn.org/OCM/CPTRelativeValueSearchResults.do?locality=7&keyword=96415>. American Medical Association CodeManager Website. Accessed August 7, 2014. 5. American Medical Association. <https://ocm.ama-assn.org/OCM/CPTRelativeValueSearchResults.do?locality=7&keyword=96417>. American Medical Association CodeManager Website. Accessed August 7, 2014. 6. ICD9Data. 2013 HCPCS J9035. <http://www.icd9data.com/HCPCS/2014/J/J9035.htm>. ICD9Data Website. Accessed August 7, 2014.

HIGHLIGHTS OF PRESCRIBING INFORMATION

These highlights do not include all the information needed to use AVASTIN safely and effectively. See full prescribing information for AVASTIN.

AVASTIN® (bevacizumab)

Solution for intravenous infusion

Initial U.S. Approval: 2004

WARNING: GASTROINTESTINAL PERFORATIONS, SURGERY AND WOUND HEALING COMPLICATIONS, and HEMORRHAGE

See full prescribing information for complete boxed warning.

- **Gastrointestinal Perforation:** Occurs in up to 3.2% of Avastin-treated patients. Discontinue Avastin for gastrointestinal perforation. (5.1)
- **Surgery and Wound Healing Complications:** Discontinue in patients with wound dehiscence. Discontinue at least 28 days prior to elective surgery. Do not initiate Avastin for at least 28 days after surgery and until the surgical wound is fully healed. (5.3)
- **Hemorrhage:** Severe or fatal hemorrhage, hemoptysis, gastrointestinal bleeding, CNS hemorrhage, and vaginal bleeding are increased in Avastin-treated patients. Do not administer Avastin to patients with serious hemorrhage or recent hemoptysis. (5.4)

RECENT MAJOR CHANGES

| | |
|--|---------|
| Warnings and Precautions, Arterial Thromboembolic Events (5.5) | 12/2013 |
| Warnings and Precautions, Proteinuria (5.8) | 12/2013 |
| Indications and Usage (1.5) | 08/2014 |
| Dosage and Administration (2.2) | 08/2014 |
| Warnings and Precautions, Gastrointestinal Perforations and Fistulae (5.1) | 08/2014 |
| Warnings and Precautions, Non-Gastrointestinal Fistulae (5.2) | 08/2014 |
| Warnings and Precautions, Hemorrhage (5.4) | |
| Warnings and Precautions, Venous Thromboembolic Events (5.6) | 08/2014 |

INDICATIONS AND USAGE

Avastin is a vascular endothelial growth factor-specific angiogenesis inhibitor indicated for the treatment of:

- Metastatic colorectal cancer, with intravenous 5-fluorouracil-based chemotherapy for first- or second-line treatment. (1.1)
- Metastatic colorectal cancer, with fluoropyrimidine-irinotecan- or fluoropyrimidine-oxaliplatin-based chemotherapy for second-line treatment in patients who have progressed on a first-line Avastin-containing regimen. (1.1)
- Non-squamous non-small cell lung cancer, with carboplatin and paclitaxel for first line treatment of unresectable, locally advanced, recurrent or metastatic disease. (1.2)
- Glioblastoma, as a single agent for adult patients with progressive disease following prior therapy. (1.3)
 - Effectiveness based on improvement in objective response rate. No data available demonstrating improvement in disease-related symptoms or survival with Avastin.
- Cervical cancer, in combination with paclitaxel and cisplatin or paclitaxel and topotecan in persistent, recurrent, or metastatic disease. (1.5)
- Metastatic renal cell carcinoma with interferon alfa (1.4)

Limitation of Use: Avastin is not indicated for adjuvant treatment of colon cancer. (1.1)

DOSAGE AND ADMINISTRATION

- Do not administer as an IV push or bolus. (2.1)
 - Do not initiate Avastin for 28 days following major surgery and until surgical wound is fully healed. (2.1)
- Metastatic colorectal cancer (2.2)
- 5 mg/kg IV every 2 weeks with bolus-IFL
 - 10 mg/kg IV every 2 weeks with FOLFOX4
 - 5 mg/kg IV every 2 weeks or 7.5 mg/kg IV every 3 weeks with fluoropyrimidine-irinotecan or fluoropyrimidine-oxaliplatin based chemotherapy after progression on a first-line Avastin containing regimen
- Non-squamous non-small cell lung cancer (2.2)
- 15 mg/kg IV every 3 weeks with carboplatin/paclitaxel
- Glioblastoma (2.2)
- 10 mg/kg IV every 2 weeks
- Metastatic renal cell carcinoma (mRCC) (2.2)
- 10 mg/kg IV every 2 weeks with interferon alfa
- Persistent, recurrent, or metastatic carcinoma of the cervix (2.2)
- 15 mg/kg IV every 3 weeks with paclitaxel/cisplatin or paclitaxel/topotecan

DOSAGE FORMS AND STRENGTHS

- 100 mg/4 mL, single use vial (3)
- 400 mg/16 mL, single use vial (3)

CONTRAINDICATIONS

None (4)

WARNINGS AND PRECAUTIONS

- Perforation or Fistula: Discontinue Avastin if perforation or fistula occurs. (5.1, 5.2)
- Arterial Thromboembolic Events (e.g., myocardial infarction, cerebral infarction): Discontinue Avastin for severe ATE. (5.5)
- Venous Thromboembolic Events: Discontinue Avastin for life-threatening VTE (5.6)
- Hypertension: Monitor blood pressure and treat hypertension. Temporarily suspend Avastin if not medically controlled. Discontinue Avastin for hypertensive crisis or hypertensive encephalopathy. (5.7)
- Posterior Reversible Encephalopathy Syndrome (PRES): Discontinue Avastin. (5.8)
- Proteinuria: Monitor urine protein. Discontinue Avastin for nephrotic syndrome. Temporarily suspend Avastin for moderate proteinuria. (5.9)
- Infusion Reactions: Stop Avastin for severe infusion reactions. (5.10)
- Ovarian Failure: Inform females of reproductive potential of the risk of ovarian failure with Avastin (5.11)

ADVERSE REACTIONS

Most common adverse reactions incidence (> 10% and at least twice the control arm rate) are epistaxis, headache, hypertension, rhinitis, proteinuria, taste alteration, dry skin, rectal hemorrhage, lacrimation disorder, back pain and exfoliative dermatitis. (6.1)

To report SUSPECTED ADVERSE REACTIONS, contact Genentech, Inc. at 1-888-835-2555 or FDA at 1-800-FDA-1088 or www.fda.gov/medwatch.

USE IN SPECIFIC POPULATIONS

- Pregnancy: Based on animal data, may cause fetal harm. (8.1)
- Nursing Mothers: Discontinue nursing or discontinue drug. (8.3)

See 17 for PATIENT COUNSELING INFORMATION.

Revised: 08/2014

FULL PRESCRIBING INFORMATION: CONTENTS*

WARNING: GASTROINTESTINAL PERFORATIONS, SURGERY AND WOUND HEALING COMPLICATIONS, and HEMORRHAGE

1 INDICATIONS AND USAGE

- 1.1 Metastatic Colorectal Cancer (mCRC)
- 1.2 Non-Squamous Non–Small Cell Lung Cancer (NSCLC)
- 1.3 Glioblastoma
- 1.4 Metastatic Renal Cell Carcinoma (mRCC)
- 1.5 Persistent, Recurrent, or Metastatic Carcinoma of the Cervix

2 DOSAGE AND ADMINISTRATION

- 2.1 Administration
- 2.2 Recommended Doses and Schedules
- 2.3 Preparation for Administration
- 2.4 Dose Modifications

3 DOSAGE FORMS AND STRENGTHS

4 CONTRAINDICATIONS

5 WARNINGS AND PRECAUTIONS

- 5.1 Gastrointestinal Perforations and Fistulae
- 5.2 Non-Gastrointestinal Fistulae
- 5.3 Surgery and Wound Healing Complications
- 5.4 Hemorrhage
- 5.5 Arterial Thromboembolic Events
- 5.6 Venous Thromboembolic Events
- 5.7 Hypertension
- 5.8 Posterior Reversible Encephalopathy Syndrome (PRES)
- 5.9 Proteinuria
- 5.10 Infusion Reactions
- 5.11 Ovarian Failure

6 ADVERSE REACTIONS

- 6.1 Clinical Trial Experience
- 6.2 Immunogenicity
- 6.3 Postmarketing Experience

7 DRUG INTERACTIONS

8 USE IN SPECIFIC POPULATIONS

- 8.1 Pregnancy
- 8.3 Nursing Mothers
- 8.4 Pediatric Use
- 8.5 Geriatric Use
- 8.6 Females of Reproductive Potential

10 OVERDOSAGE

11 DESCRIPTION

12 CLINICAL PHARMACOLOGY

- 12.1 Mechanism of Action
- 12.3 Pharmacokinetics

13 NONCLINICAL TOXICOLOGY

- 13.1 Carcinogenesis, Mutagenesis, Impairment of Fertility
- 13.2 Animal Toxicology and/or Pharmacology
- 13.3 Reproductive and Developmental Toxicology

14 CLINICAL STUDIES

- 14.1 Metastatic Colorectal Cancer (mCRC)
- 14.2 Lack of Efficacy in Adjuvant Treatment of Colon Cancer
- 14.3 Unresectable Non–Squamous Non–Small Cell Lung Cancer (NSCLC)
- 14.4 Glioblastoma
- 14.5 Metastatic Renal Cell Carcinoma (mRCC)
- 14.6 Persistent, Recurrent, or Metastatic Carcinoma of the Cervix

16 HOW SUPPLIED/STORAGE AND HANDLING

17 PATIENT COUNSELING INFORMATION

* Sections or subsections omitted from the Full Prescribing Information are not listed.

FULL PRESCRIBING INFORMATION

WARNING: GASTROINTESTINAL PERFORATIONS, SURGERY AND WOUND HEALING COMPLICATIONS, and HEMORRHAGE

Gastrointestinal Perforations

The incidence of gastrointestinal perforation, some fatal, in Avastin-treated patients ranges from 0.3 to 3.2% . Discontinue Avastin in patients with gastrointestinal perforation.

[See *Dosage and Administration* (2.4), *Warnings and Precautions* (5.1).]

Surgery and Wound Healing Complications

The incidence of wound healing and surgical complications, including serious and fatal complications, is increased in Avastin-treated patients. Discontinue Avastin in patients with wound dehiscence. The appropriate interval between termination of Avastin and subsequent elective surgery required to reduce the risks of impaired wound healing/wound dehiscence has not been determined. Discontinue at least 28 days prior to elective surgery. Do not initiate Avastin for at least 28 days after surgery and until the surgical wound is fully healed.

[See *Dosage and Administration* (2.4), *Warnings and Precautions* (5.2), *Adverse Reactions* (6.1).]

Hemorrhage

Severe or fatal hemorrhage, including hemoptysis, gastrointestinal bleeding, central nervous systems (CNS) hemorrhage, epistaxis, and vaginal bleeding occur up to five-fold more frequently in patients receiving Avastin. Do not administer Avastin to patients with serious hemorrhage or recent hemoptysis. [See *Dosage and Administration* (2.4), *Warnings and Precautions* (5.3), *Adverse Reactions* (6.1).]

1 INDICATIONS AND USAGE

1.1 Metastatic Colorectal Cancer (mCRC)

Avastin is indicated for the first- or second-line treatment of patients with metastatic carcinoma of the colon or rectum in combination with intravenous 5-fluorouracil-based chemotherapy.

Avastin, in combination with fluoropyrimidine-irinotecan- or fluoropyrimidine-oxaliplatin-based chemotherapy, is indicated for the second-line treatment of patients with metastatic colorectal cancer who have progressed on a first-line Avastin-containing regimen.

Limitation of Use: Avastin is not indicated for adjuvant treatment of colon cancer. [See *Clinical Studies* (14.2).]

1.2 Non-Squamous Non–Small Cell Lung Cancer (NSCLC)

Avastin is indicated for the first-line treatment of unresectable, locally advanced, recurrent or metastatic non–squamous non–small cell lung cancer in combination with carboplatin and paclitaxel.

1.3 Glioblastoma

Avastin is indicated for the treatment of glioblastoma with progressive disease in adult patients following prior therapy as a single agent.

The effectiveness of Avastin in glioblastoma is based on an improvement in objective response rate. There are no data demonstrating an improvement in disease-related symptoms or increased survival with Avastin. [See *Clinical Studies* (14.4).]

1.4 Metastatic Renal Cell Carcinoma (mRCC)

Avastin is indicated for the treatment of metastatic renal cell carcinoma in combination with interferon alfa.

1.5 Persistent, Recurrent, or Metastatic Carcinoma of the Cervix

Avastin in combination with paclitaxel and cisplatin or paclitaxel and topotecan is indicated for the treatment of persistent, recurrent, or metastatic carcinoma of the cervix. [See *Clinical Studies* (14.6).]

48
49
50
51
52
53
54
55
56
57
58
59
60
61
62
63
64
65
66
67
68
69
70
71
72
73
74
75
76
77
78
79
80
81
82
83
84
85
86
87
88
89
90
91
92
93
94
95

2 DOSAGE AND ADMINISTRATION

2.1 Administration

- Do not administer as an intravenous push or bolus. Administer only as an intravenous (IV) infusion.
- Do not initiate Avastin until at least 28 days following major surgery. Administer Avastin after the surgical incision has fully healed.
 - First infusion: Administer infusion over 90 minutes.
 - Subsequent infusions: Administer second infusion over 60 minutes if first infusion is tolerated; administer all subsequent infusions over 30 minutes if infusion over 60 minutes is tolerated.

2.2 Recommended Doses and Schedules

- Patients should continue treatment until disease progression or unacceptable toxicity.
- Metastatic Colorectal Cancer (mCRC)*
- The recommended doses are 5 mg/kg or 10 mg/kg every 2 weeks when used in combination with intravenous 5-FU-based chemotherapy.
- Administer 5 mg/kg when used in combination with bolus-IFL.
 - Administer 10 mg/kg when used in combination with FOLFOX4.
 - Administer 5 mg/kg every 2 weeks or 7.5 mg/kg every 3 weeks when used in combination with a fluoropyrimidine-irinotecan or fluoropyrimidine-oxaliplatin based chemotherapy regimen in patients who have progressed on a first-line Avastin-containing regimen.

Non-Squamous Non-Small Cell Lung Cancer (NSCLC)

The recommended dose is 15 mg/kg every 3 weeks in combination with carboplatin and paclitaxel.

Glioblastoma

The recommended dose is 10 mg/kg every 2 weeks.

Metastatic Renal Cell Carcinoma (mRCC)

The recommended dose is 10 mg/kg every 2 weeks in combination with interferon alfa.

Cervical Cancer

The recommended dose of Avastin is 15 mg/kg every 3 weeks as an intravenous infusion administered in combination with one of the following chemotherapy regimens: paclitaxel and cisplatin, or paclitaxel and topotecan.

2.3 Preparation for Administration

Use appropriate aseptic technique. Parenteral drug products should be inspected visually for particulate matter and discoloration prior to administration, whenever solution and container permit. Withdraw necessary amount of Avastin and dilute in a total volume of 100 mL of 0.9% Sodium Chloride Injection, USP. Discard any unused portion left in a vial, as the product contains no preservatives.

DO NOT ADMINISTER OR MIX WITH DEXTROSE SOLUTION.

2.4 Dose Modifications

- There are no recommended dose reductions.
- Discontinue Avastin for:
- Gastrointestinal perforations (gastrointestinal perforations, fistula formation in the gastrointestinal tract, intra-abdominal abscess), fistula formation involving an internal organ [See Boxed Warning, Warnings and Precautions (5.1, 5.2).]
 - Wound dehiscence and wound healing complications requiring medical intervention [See Warnings and Precautions (5.3).]
 - Serious hemorrhage (i.e., requiring medical intervention) [See Boxed Warning, Warnings and Precautions (5.4).]

- Severe arterial thromboembolic events [*See Warnings and Precautions (5.5).*]
 - Life-threatening (Grade 4) venous thromboembolic events, including pulmonary embolism [*See Warnings and Precautions (5.6).*]
 - Hypertensive crisis or hypertensive encephalopathy [*See Warnings and Precautions (5.7).*]
 - Posterior Reversible Encephalopathy Syndrome (PRES) [*See Warnings and Precautions (5.8).*]
 - Nephrotic syndrome [*See Warnings and Precautions (5.9).*]
- Temporarily suspend Avastin for:
- At least 4 weeks prior to elective surgery [*See Warnings and Precautions (5.3).*]
 - Severe hypertension not controlled with medical management [*See Warnings and Precautions (5.7).*]
 - Moderate to severe proteinuria [*See Warnings and Precautions (5.9).*]
 - Severe infusion reactions [*See Warnings and Precautions (5.10).*]

3 DOSAGE FORMS AND STRENGTHS

100 mg per 4 mL single-use vial
400 mg per 16 mL single-use vial

4 CONTRAINDICATIONS

None.

5 WARNINGS AND PRECAUTIONS

5.1 Gastrointestinal Perforations and Fistulae

Serious and sometimes fatal gastrointestinal perforation occurs at a higher incidence in Avastin treated patients compared to controls. The incidence of gastrointestinal perforation ranged from 0.3 to 3.2% across clinical studies. [*See Adverse Reactions (6.1).*] From a clinical trial in patients with persistent, recurrent, or metastatic cervical cancer (Study 9), gastrointestinal perforations were reported in 3.2% of Avastin treated patients, all of whom had a history of prior pelvic radiation. Fatal outcome was reported in <1% of Avastin-treated patients.

The typical presentation may include abdominal pain, nausea, emesis, constipation, and fever. Perforation can be complicated by intra-abdominal abscess, fistula formation, and the need for diverting ostomies. The majority of cases occurred within the first 50 days of initiation of Avastin. Permanently discontinue Avastin in patients with gastrointestinal perforation.

In Avastin clinical trials, gastrointestinal fistulae have been reported with an incidence of up to 2% in patients with metastatic colorectal cancer but were also reported less commonly in patients with other types of cancer. In a cervical cancer trial (Study 9), the incidence of gastrointestinal-vaginal fistulae was 8.2% in Avastin-treated patients and 0.9% in control patients, all of whom had a history of prior pelvic radiation. Patients who develop GI vaginal fistulas may also have bowel obstructions and require surgical intervention as well as diverting ostomies. [*See Boxed Warning, Dosage and Administration (2.4).*]

5.2 Non-Gastrointestinal Fistulae

Serious and sometimes fatal fistula formation involving tracheo-esophageal, bronchopleural, biliary, vaginal, renal and bladder sites occurs at a higher incidence in Avastin-treated patients compared to controls. Uncommon (<1%) reports of fistulae that involve areas of the body other than the gastrointestinal tract were observed in clinical trials across various indications and have also been reported in post-marketing experience. Most events occurred within the first 6 months of Avastin therapy.

From a clinical trial in patients with persistent, recurrent, or metastatic cervical cancer (Study 9), 1.8% of Avastin-treated patients and 1.4% of control patients were reported to have had non-gastrointestinal vaginal, vesical, or female genital tract fistulae.

Permanently discontinue Avastin in patients with tracheoesophageal (TE) fistula or any Grade 4 fistula. Discontinue Avastin in patients with fistula formation involving an internal organ. [See *Dosage and Administration* (2.4).]

5.3 Surgery and Wound Healing Complications

Avastin impairs wound healing in animal models. [See *Nonclinical Toxicology* (13.2).] In clinical trials, administration of Avastin was not allowed until at least 28 days after surgery. In a controlled clinical trial, the incidence of wound healing complications, including serious and fatal complications, in patients with mCRC who underwent surgery during the course of Avastin treatment was 15% and in patients who did not receive Avastin, was 4%. [See *Adverse Reactions* (6.1).]

Avastin should not be initiated for at least 28 days following surgery and until the surgical wound is fully healed. Discontinue Avastin in patients with wound healing complications requiring medical intervention.

The appropriate interval between the last dose of Avastin and elective surgery is unknown; however, the half-life of Avastin is estimated to be 20 days. Suspend Avastin for at least 28 days prior to elective surgery. Do not administer Avastin until the wound is fully healed. [See *Boxed Warning, Dosage and Administration* (2.4).]

Necrotizing fasciitis including fatal cases, has been reported in patients treated with Avastin; usually secondary to wound healing complications, gastrointestinal perforation or fistula formation. Discontinue Avastin therapy in patients who develop necrotizing fasciitis. [See *Adverse Reactions* (6.3).]

5.4 Hemorrhage

Avastin can result in two distinct patterns of bleeding: minor hemorrhage, most commonly Grade 1 epistaxis; and serious, and in some cases fatal, hemorrhagic events. Severe or fatal hemorrhage, including hemoptysis, gastrointestinal bleeding, hematemesis, CNS hemorrhage, epistaxis, and vaginal bleeding occurred up to five-fold more frequently in patients receiving Avastin compared to patients receiving only chemotherapy. Across indications, the incidence of Grade ≥ 3 hemorrhagic events among patients receiving Avastin ranged from 0.4 to 6.9 %. [See *Adverse Reactions* (6.1).]

Serious or fatal pulmonary hemorrhage occurred in four of 13 (31%) patients with squamous cell histology and two of 53 (4%) patients with non-squamous non-small cell lung cancer receiving Avastin and chemotherapy compared to none of the 32 (0%) patients receiving chemotherapy alone.

In clinical studies in non-small cell lung cancer where patients with CNS metastases who completed radiation and surgery more than 4 weeks prior to the start of Avastin were evaluated with serial CNS imaging, symptomatic Grade 2 CNS hemorrhage was documented in one of 83 Avastin-treated patients (rate 1.2%, 95% CI 0.06%–5.93%).

Intracranial hemorrhage occurred in 8 of 163 patients with previously treated glioblastoma; two patients had Grade 3–4 hemorrhage.

Do not administer Avastin to patients with recent history of hemoptysis of $\geq 1/2$ teaspoon of red blood. Discontinue Avastin in patients with hemorrhage. [See *Boxed Warning, Dosage and Administration* (2.4).]

5.5 Arterial Thromboembolic Events

Serious, sometimes fatal, arterial thromboembolic events (ATE) including cerebral infarction, transient ischemic attacks, myocardial infarction, angina, and a variety of other ATE occurred at a higher incidence in patients receiving Avastin compared to those in the control arm. Across indications, the incidence of Grade ≥ 3 ATE in the Avastin containing arms was 2.6% compared to

0.8% in the control arms. Among patients receiving Avastin in combination with chemotherapy, the risk of developing ATE during therapy was increased in patients with a history of arterial thromboembolism, diabetes, or age greater than 65 years. [See *Use in Specific Populations* (8.5).]

The safety of resumption of Avastin therapy after resolution of an ATE has not been studied. Discontinue Avastin in patients who experience a severe ATE. [See *Dosage and Administration* (2.4).]

5.6 Venous Thromboembolic Events

Patients treated for persistent, recurrent, or metastatic cervical cancer with Avastin may be at increased risk of venous thromboembolic events (VTE).

From a clinical trial in patients with persistent, recurrent, or metastatic cervical cancer (Study 9), Grade ≥ 3 VTE were reported in 10.6% of patients treated with chemotherapy and Avastin compared with 5.4% in patients receiving chemotherapy alone. Permanently discontinue Avastin in patients with life-threatening (Grade 4) VTE, including pulmonary embolism. [See *Dosage and Administration* (2.4), *Adverse Reactions* (6.1).]

5.7 Hypertension

The incidence of severe hypertension is increased in patients receiving Avastin as compared to controls. Across clinical studies the incidence of Grade 3 or 4 hypertension ranged from 5-18%.

Monitor blood pressure every two to three weeks during treatment with Avastin. Treat with appropriate anti-hypertensive therapy and monitor blood pressure regularly. Continue to monitor blood pressure at regular intervals in patients with Avastin-induced or -exacerbated hypertension after discontinuation of Avastin.

Temporarily suspend Avastin in patients with severe hypertension that is not controlled with medical management. Discontinue Avastin in patients with hypertensive crisis or hypertensive encephalopathy. [See *Dosage and Administration* (2.4).]

5.8 Posterior Reversible Encephalopathy Syndrome (PRES)

PRES has been reported with an incidence of $<0.5\%$ in clinical studies. The onset of symptoms occurred from 16 hours to 1 year after initiation of Avastin. PRES is a neurological disorder which can present with headache, seizure, lethargy, confusion, blindness and other visual and neurologic disturbances. Mild to severe hypertension may be present. Magnetic resonance imaging (MRI) is necessary to confirm the diagnosis of PRES.

Discontinue Avastin in patients developing PRES. Symptoms usually resolve or improve within days, although some patients have experienced ongoing neurologic sequelae. The safety of reinitiating Avastin therapy in patients previously experiencing PRES is not known. [See *Dosage and Administration* (2.4).]

5.9 Proteinuria

The incidence and severity of proteinuria is increased in patients receiving Avastin as compared to controls. Nephrotic syndrome occurred in $<1\%$ of patients receiving Avastin in clinical trials, in some instances with fatal outcome. [See *Adverse Reactions* (6.1).] In a published case series, kidney biopsy of six patients with proteinuria showed findings consistent with thrombotic microangiopathy.

Monitor proteinuria by dipstick urine analysis for the development or worsening of proteinuria with serial urinalyses during Avastin therapy. Patients with a 2+ or greater urine dipstick reading should undergo further assessment with a 24-hour urine collection.

Suspend Avastin administration for ≥ 2 grams of proteinuria/24 hours and resume when proteinuria is <2 gm/24 hours. Discontinue Avastin in patients with nephrotic syndrome. [See *Dosage and Administration* (2.4).] Data from a postmarketing safety study showed poor correlation between UPCR (Urine Protein/Creatinine Ratio) and 24 hour urine protein (Pearson Correlation 0.39 (95% CI 0.17, 0.57)). [See *Use in Specific Populations* (8.5).]

5.10 Infusion Reactions

Infusion reactions reported in the clinical trials and post-marketing experience include hypertension, hypertensive crises associated with neurologic signs and symptoms, wheezing, oxygen desaturation, Grade 3 hypersensitivity, chest pain, headaches, rigors, and diaphoresis. In clinical studies, infusion reactions with the first dose of Avastin were uncommon (<3%) and severe reactions occurred in 0.2% of patients.

Stop infusion if a severe infusion reaction occurs and administer appropriate medical therapy. [See *Dosage and Administration* (2.4).]

5.11 Ovarian Failure

The incidence of ovarian failure was higher (34% vs. 2%) in premenopausal women receiving Avastin in combination with mFOLFOX chemotherapy as compared to those receiving mFOLFOX chemotherapy alone for adjuvant treatment for colorectal cancer, a use for which Avastin is not approved. Inform females of reproductive potential of the risk of ovarian failure prior to starting treatment with Avastin. [See *Adverse Reactions* (6.1), *Use in Specific Populations* (8.6).]

6 ADVERSE REACTIONS

The following serious adverse reactions are discussed in greater detail in other sections of the label:

- Gastrointestinal Perforations and Fistulae [See *Boxed Warning*, *Dosage and Administration* (2.4), *Warnings and Precautions* (5.1).]
- Non-Gastrointestinal Fistulae [See *Dosage and Administration* (2.4), *Warnings and Precautions* (5.2).]
- Surgery and Wound Healing Complications [See *Boxed Warning*, *Dosage and Administration* (2.4), *Warnings and Precautions* (5.3).]
- Hemorrhage [See *Boxed Warning*, *Dosage and Administration* (2.4), *Warnings and Precautions* (5.4).]
- Arterial Thromboembolic Events [See *Dosage and Administration* (2.4), *Warnings and Precautions* (5.5).]
- Venous Thromboembolic Events [See *Dosage and Administration* (2.4), *Warnings and Precautions* (5.6).]
- Hypertensive Crisis [See *Dosage and Administration* (2.4), *Warnings and Precautions* (5.7).]
- Posterior Reversible Encephalopathy Syndrome [See *Dosage and Administration* (2.4), *Warnings and Precautions* (5.8).]
- Proteinuria [See *Dosage and Administration* (2.4), *Warnings and Precautions* (5.9).]
- Infusion Reactions [See *Dosage and Administration* (2.4), *Warnings and Precautions* (5.10).]
- Ovarian Failure [See *Warnings and Precautions* (5.11), *Use in Specific Populations* (8.6).]

The most common adverse reactions observed in Avastin patients at a rate >10% and at least twice the control arm rate, are epistaxis, headache, hypertension, rhinitis, proteinuria, taste alteration, dry skin, rectal hemorrhage, lacrimation disorder, back pain and exfoliative dermatitis.

Across all studies, Avastin was discontinued in 8.4 to 21% of patients because of adverse reactions.

6.1 Clinical Trial Experience

Because clinical trials are conducted under widely varying conditions, adverse reaction rates observed in the clinical trials of a drug cannot be directly compared to rates in the clinical trials of another drug and may not reflect the rates observed in practice.

The data below reflect exposure to Avastin in 4817 patients with CRC, non-squamous NSCLC, glioblastoma, mRCC, or cervical cancer, including controlled (Studies 1, 2, 4, 5, 8 and 9) or uncontrolled, single arm trials (Study 6) treated at the recommended dose and schedule for a median of 6 to 23 doses of Avastin. [See *Clinical Studies* (14).] The population was aged 18-89 years (median 59 years), 44% male and 85% White. The population included 2184 first- and second-line

mCRC patients who received a median of 10 doses of Avastin, 480 first-line metastatic NSCLC patients who received a median of 8 doses of Avastin, 163 glioblastoma patients who received a median of 9 doses of Avastin, 337 mRCC patients who received a median of 16 doses of Avastin, and 218 cervical cancer patients who received a median of 6 doses of Avastin. These data also reflect exposure to Avastin in 363 patients with metastatic breast cancer (MBC) who received a median of 9.5 doses of Avastin, 669 female adjuvant CRC patients who received a median of 23 doses of Avastin, and 403 previously untreated patients with diffuse large B-cell lymphoma (DLBCL) who received a median of 8 doses of Avastin. Avastin is not approved for use in MBC, adjuvant CRC, or DLBCL.

Surgery and Wound Healing Complications

The incidence of post-operative wound healing and/or bleeding complications was increased in patients with mCRC receiving Avastin as compared to patients receiving only chemotherapy. Among patients requiring surgery on or within 60 days of receiving study treatment, wound healing and/or bleeding complications occurred in 15% (6/39) of patients receiving bolus-IFL plus Avastin as compared to 4% (1/25) of patients who received bolus-IFL alone.

In Study 6, events of post-operative wound healing complications (craniotomy site wound dehiscence and cerebrospinal fluid leak) occurred in patients with previously treated glioblastoma: 3/84 patients in the Avastin alone arm and 1/79 patients in the Avastin plus irinotecan arm. [See Boxed Warning, Dosage and Administration (2.4), Warnings and Precautions (5.3).]

Hemorrhage

The incidence of epistaxis was higher (35% vs. 10%) in patients with mCRC receiving bolus-IFL plus Avastin compared with patients receiving bolus-IFL plus placebo. All but one of these events were Grade 1 in severity and resolved without medical intervention. Grade 1 or 2 hemorrhagic events were more frequent in patients receiving bolus-IFL plus Avastin when compared to those receiving bolus-IFL plus placebo and included gastrointestinal hemorrhage (24% vs. 6%), minor gum bleeding (2% vs. 0), and vaginal hemorrhage (4% vs. 2%). [See Boxed Warning, Dosage and Administration (2.4), Warnings and Precautions (5.4).]

Venous Thromboembolic Events

The overall incidence of Grade 3–4 venous thromboembolic events in Study 1 was 15.1% in patients receiving bolus-IFL plus Avastin and 13.6% in patients receiving bolus-IFL plus placebo. In Study 1, more patients in the Avastin containing arm experienced deep venous thrombosis (34 vs. 19 patients) and intra-abdominal venous thrombosis (10 vs. 5 patients).

The risk of developing a second thromboembolic event while on Avastin and oral anticoagulants was evaluated in two randomized studies. In Study 1, 53 patients (14%) on the bolus-IFL plus Avastin arm and 30 patients (8%) on the bolus-IFL plus placebo arm received full dose warfarin following a venous thromboembolic event (VTE). Among these patients, an additional thromboembolic event occurred in 21% (11/53) of patients receiving bolus-IFL plus Avastin and 3% (1/30) of patients receiving bolus-IFL alone.

In a second, randomized, 4-arm study in 1401 patients with mCRC, prospectively evaluating the incidence of VTE (all grades), the overall incidence of first VTE was higher in the Avastin containing arms (13.5%) than the chemotherapy alone arms (9.6%). Among the 116 patients treated with anticoagulants following an initial VTE event (73 in the Avastin plus chemotherapy arms and 43 in the chemotherapy alone arms), the overall incidence of subsequent VTEs was also higher among the Avastin treated patients (31.5% vs. 25.6%). In this subgroup of patients treated with anticoagulants, the overall incidence of bleeding, the majority of which were Grade 1, was higher in the Avastin treated arms than the chemotherapy arms (27.4% vs. 20.9%).

From a clinical trial in patients with persistent, recurrent, or metastatic cervical cancer (Study 9), Grade 3 or 4 VTE have been reported in 10.6% of patients treated with chemotherapy and Avastin

compared with 5.4% in patients receiving chemotherapy alone. There were no patients with Grade 5 VTE. [See *Dosage and Administration* (2.4), *Warnings and Precautions* (5.6).]

Neutropenia and Infection

The incidences of neutropenia and febrile neutropenia are increased in patients receiving Avastin plus chemotherapy compared to chemotherapy alone. In Study 1, the incidence of Grade 3 or 4 neutropenia was increased in mCRC patients receiving IFL plus Avastin (21%) compared to patients receiving IFL alone (14%). In Study 5, the incidence of Grade 4 neutropenia was increased in NSCLC patients receiving paclitaxel/carboplatin (PC) plus Avastin (26.2%) compared with patients receiving PC alone (17.2%). Febrile neutropenia was also increased (5.4% for PC plus Avastin vs. 1.8% for PC alone). There were 19 (4.5%) infections with Grade 3 or 4 neutropenia in the PC plus Avastin arm of which 3 were fatal compared to 9 (2%) neutropenic infections in patients receiving PC alone, of which none were fatal. During the first 6 cycles of treatment, the incidence of serious infections including pneumonia, febrile neutropenia, catheter infections and wound infections was increased in the PC plus Avastin arm [58 patients (13.6%)] compared to the PC alone arm [29 patients (6.6%)].

In Study 6, one fatal event of neutropenic infection occurred in a patient with previously treated glioblastoma receiving Avastin alone. The incidence of any grade of infection in patients receiving Avastin alone was 55% and the incidence of Grade 3–5 infection was 10%.

Proteinuria

Grade 3–4 proteinuria ranged from 0.7 to 7.4% in Studies 1, 2, 4, 5 and 8. The overall incidence of proteinuria (all grades) was only adequately assessed in Study 8, in which the incidence was 20%. Median onset of proteinuria was 5.6 months (range 15 days to 37 months) after initiation of Avastin. Median time to resolution was 6.1 months (95% CI 2.8 months, 11.3 months). Proteinuria did not resolve in 40% of patients after median follow up of 11.2 months and required permanent discontinuation of Avastin in 30% of the patients who developed proteinuria (Study 8).

In an exploratory, pooled analysis of 8,273 patients treated in 7 randomized clinical trials, 5.4% (271 of 5037) of patients receiving Avastin in combination with chemotherapy experienced Grade ≥ 2 proteinuria. The Grade ≥ 2 proteinuria resolved in 74.2% (201 of 271) of patients. Avastin was re-initiated in 41.7% (113 of 271) of patients. Of the 113 patients who re-initiated Avastin, 47.8% (54 of 113) experienced a second episode of Grade ≥ 2 proteinuria. [See *Warnings and Precautions* (5.9).]

Congestive Heart Failure (CHF)

The incidence of Grade ≥ 3 left ventricular dysfunction was 1.0% in patients receiving Avastin compared to 0.6% in the control arm across indications. In patients with metastatic breast cancer (MBC), an indication for which Avastin is not approved, the incidence of Grade 3–4 CHF was increased in patients in the Avastin plus paclitaxel arm (2.2%) as compared to the control arm (0.3%). Among patients receiving prior anthracyclines for MBC, the rate of CHF was 3.8% for patients receiving Avastin as compared to 0.6% for patients receiving paclitaxel alone. The safety of continuation or resumption of Avastin in patients with cardiac dysfunction has not been studied.

In previously untreated patients with diffuse large B-cell lymphoma (DLBCL), an indication for which Avastin is not approved, the incidence of CHF and decline in left-ventricular ejection fraction (LVEF) were significantly increased in the Avastin plus R-CHOP (rituximab, cyclophosphamide, doxorubicin, vincristine, and prednisone) arm (n=403) compared to the placebo plus R-CHOP arm (n=379); both regimens were given for 6 to 8 cycles. At the completion of R-CHOP therapy, the incidence of CHF was 10.9% in the Avastin plus R-CHOP arm compared to 5.0% in the R-CHOP alone arm [relative risk (95% CI) of 2.2 (1.3, 3.7)]. The incidence of a LVEF event, defined as a decline from baseline of 20% or more in LVEF or a decline from baseline of 10% or more to a LVEF value of less than 50%, was also increased in the Avastin plus R-CHOP arm (10.4%) compared to the R-CHOP alone arm (5.0%). Time to onset of left-ventricular dysfunction or CHF

was 1-6 months after initiation of therapy in at least 85% of the patients and was resolved in 62% of the patients experiencing CHF in the Avastin arm compared to 82% in the control arm.

Ovarian Failure

The incidence of new cases of ovarian failure (defined as amenorrhoea lasting 3 or more months, FSH level ≥ 30 mIU/mL and a negative serum β -HCG pregnancy test) was prospectively evaluated in a subset of 179 women receiving mFOLFOX chemotherapy alone (n = 84) or with Avastin (n = 95). New cases of ovarian failure were identified in 34% (32/95) of women receiving Avastin in combination with chemotherapy compared with 2% (2/84) of women receiving chemotherapy alone [relative risk of 14 (95% CI 4, 53)]. After discontinuation of Avastin treatment, recovery of ovarian function at all time points during the post-treatment period was demonstrated in 22% (7/32) of the Avastin-treated women. Recovery of ovarian function is defined as resumption of menses, a positive serum β -HCG pregnancy test, or a FSH level < 30 mIU/mL during the post-treatment period. Long term effects of Avastin exposure on fertility are unknown. [See *Warnings and Precautions* (5.11), *Use in Specific Populations* (8.6).]

Metastatic Colorectal Cancer (mCRC)

The data in Table 1 and Table 2 were obtained in Study 1, a randomized, double-blind, controlled trial comparing chemotherapy plus Avastin with chemotherapy plus placebo. Avastin was administered at 5 mg/kg every 2 weeks.

All Grade 3–4 adverse events and selected Grade 1–2 adverse events (hypertension, proteinuria, thromboembolic events) were collected in the entire study population. Severe and life-threatening (Grade 3–4) adverse events, which occurred at a higher incidence ($\geq 2\%$) in patients receiving bolus-IFL plus Avastin as compared to bolus-IFL plus placebo, are presented in Table 1.

Table 1
NCI-CTC Grade 3–4 Adverse Events in Study 1
(Occurring at Higher Incidence [$\geq 2\%$] Avastin vs. Control)

| | Arm 1 IFL + Placebo (n = 396) | Arm 2 IFL + Avastin (n = 392) |
|----------------------------|-------------------------------------|-------------------------------------|
| NCI-CTC Grade 3-4 Events | 74% | 87% |
| <u>Body as a Whole</u> | | |
| Asthenia | 7% | 10% |
| Abdominal Pain | 5% | 8% |
| Pain | 5% | 8% |
| <u>Cardiovascular</u> | | |
| Hypertension | 2% | 12% |
| Deep Vein Thrombosis | 5% | 9% |
| Intra-Abdominal Thrombosis | 1% | 3% |
| Syncope | 1% | 3% |
| <u>Digestive</u> | | |
| Diarrhea | 25% | 34% |
| Constipation | 2% | 4% |
| <u>Hemic/Lymphatic</u> | | |
| Leukopenia | 31% | 37% |
| Neutropenia ^a | 14% | 21% |

^a Central laboratories were collected on Days 1 and 21 of each cycle.
Neutrophil counts are available in 303 patients in Arm 1 and 276 in Arm 2.

Grade 1–4 adverse events which occurred at a higher incidence ($\geq 5\%$) in patients receiving bolus-IFL plus Avastin as compared to the bolus-IFL plus placebo arm are presented in Table 2. Grade 1–4 adverse events were collected for the first approximately 100 patients in each of the three treatment arms who were enrolled until enrollment in Arm 3 (5-FU/LV + Avastin) was discontinued.

Table 2
NCI-CTC Grade 1-4 Adverse Events in Study 1
(Occurring at Higher Incidence [$\geq 5\%$] in IFL+Avastin vs. IFL)

| | Arm 1 IFL + Placebo (n = 98) | Arm 2 IFL + Avastin (n = 102) | Arm 3 5-FU/LV + Avastin (n = 109) |
|-----------------------------|------------------------------------|-------------------------------------|---|
| <u>Body as a Whole</u> | | | |
| Pain | 55% | 61% | 62% |
| Abdominal Pain | 55% | 61% | 50% |
| Headache | 19% | 26% | 26% |
| <u>Cardiovascular</u> | | | |
| Hypertension | 14% | 23% | 34% |
| Hypotension | 7% | 15% | 7% |
| Deep Vein Thrombosis | 3% | 9% | 6% |
| <u>Digestive</u> | | | |
| Vomiting | 47% | 52% | 47% |
| Anorexia | 30% | 43% | 35% |
| Constipation | 29% | 40% | 29% |
| Stomatitis | 18% | 32% | 30% |
| Dyspepsia | 15% | 24% | 17% |
| GI Hemorrhage | 6% | 24% | 19% |
| Weight Loss | 10% | 15% | 16% |
| Dry Mouth | 2% | 7% | 4% |
| Colitis | 1% | 6% | 1% |
| <u>Hemic/Lymphatic</u> | | | |
| Thrombocytopenia | 0% | 5% | 5% |
| <u>Nervous</u> | | | |
| Dizziness | 20% | 26% | 19% |
| <u>Respiratory</u> | | | |
| Upper Respiratory Infection | 39% | 47% | 40% |
| Epistaxis | 10% | 35% | 32% |
| Dyspnea | 15% | 26% | 25% |
| Voice Alteration | 2% | 9% | 6% |
| <u>Skin/Appendages</u> | | | |
| Alopecia | 26% | 32% | 6% |
| Skin Ulcer | 1% | 6% | 6% |

Table 2 (cont'd)
NCI-CTC Grade 1-4 Adverse Events in Study 1
(Occurring at Higher Incidence [$\geq 5\%$] in IFL+Avastin vs. IFL)

| | Arm 1 IFL + Placebo (n=98) | Arm 2 IFL + Avastin (n=102) | Arm 3 5-FU/LV + Avastin (n=109) |
|-----------------------|----------------------------------|-----------------------------------|---------------------------------------|
| <u>Special Senses</u> | | | |
| Taste Disorder | 9% | 14% | 21% |
| <u>Urogenital</u> | | | |
| Proteinuria | 24% | 36% | 36% |

418

419 *Avastin in Combination with FOLFOX4 in Second-line mCRC*

420 Only Grade 3-5 non-hematologic and Grade 4-5 hematologic adverse events related to treatment
421 were collected in Study 2. The most frequent adverse events (selected Grade 3-5 non-hematologic
422 and Grade 4-5 hematologic adverse events) occurring at a higher incidence ($\geq 2\%$) in 287 patients
423 receiving FOLFOX4 plus Avastin compared to 285 patients receiving FOLFOX4 alone were fatigue
424 (19% vs. 13%), diarrhea (18% vs. 13%), sensory neuropathy (17% vs. 9%), nausea (12% vs. 5%),
425 vomiting (11% vs. 4%), dehydration (10% vs. 5%), hypertension (9% vs. 2%), abdominal pain (8%
426 vs. 5%), hemorrhage (5% vs. 1%), other neurological (5% vs. 3%), ileus (4% vs. 1%) and headache
427 (3% vs. 0%). These data are likely to under-estimate the true adverse event rates due to the reporting
428 mechanisms used in Study 2.

429 *Avastin in Combination with Fluoropyrimidine-Irinotecan or Fluoropyrimidine-Oxaliplatin Based*
430 *Chemotherapy in Second-line mCRC Patients who have Progressed on an Avastin Containing*
431 *Regimen in First-line mCRC:*

432 No new safety signals were observed in Study 4 when Avastin was administered in second line
433 mCRC patients who progressed on an Avastin containing regimen in first line mCRC. The safety
434 data was consistent with the known safety profile established in first and second line mCRC.

435 *Unresectable Non-Squamous Non-Small Cell Lung Cancer (NSCLC)*

436 Only Grade 3-5 non-hematologic and Grade 4-5 hematologic adverse events were collected in
437 Study 5. Grade 3-5 non-hematologic and Grade 4-5 hematologic adverse events (occurring at a
438 higher incidence ($\geq 2\%$) in 427 patients receiving PC plus Avastin compared with 441 patients
439 receiving PC alone were neutropenia (27% vs. 17%), fatigue (16% vs. 13%), hypertension (8% vs.
440 0.7%), infection without neutropenia (7% vs. 3%), venous thrombus/embolism (5% vs. 3%), febrile
441 neutropenia (5% vs. 2%), pneumonitis/pulmonary infiltrates (5% vs. 3%), infection with Grade 3 or
442 4 neutropenia (4% vs. 2%), hyponatremia (4% vs. 1%), headache (3% vs. 1%) and proteinuria (3%
443 vs. 0%).

444 *Glioblastoma*

445 All adverse events were collected in 163 patients enrolled in Study 6 who either received Avastin
446 alone or Avastin plus irinotecan. All patients received prior radiotherapy and temozolomide.
447 Avastin was administered at 10 mg/kg every 2 weeks alone or in combination with irinotecan.
448 Avastin was discontinued due to adverse events in 4.8% of patients treated with Avastin alone.

449 In patients receiving Avastin alone (N=84), the most frequently reported adverse events of any
450 grade were infection (55%), fatigue (45%), headache (37%), hypertension (30%), epistaxis (19%)
451 and diarrhea (21%). Of these, the incidence of Grade ≥ 3 adverse events was infection (10%),
452 fatigue (4%), headache (4%), hypertension (8%) and diarrhea (1%). Two deaths on study were
453 possibly related to Avastin: one retroperitoneal hemorrhage and one neutropenic infection.

454 In patients receiving Avastin alone or Avastin plus irinotecan (N = 163), the incidence of
455 Avastin-related adverse events (Grade 1–4) were bleeding/hemorrhage (40%), epistaxis (26%), CNS
456 hemorrhage (5%), hypertension (32%), venous thromboembolic event (8%), arterial thromboembolic
457 event (6%), wound-healing complications (6%), proteinuria (4%), gastrointestinal perforation (2%),
458 and PRES (1%). The incidence of Grade 3–5 events in these 163 patients were bleeding/hemorrhage
459 (2%), CNS hemorrhage (1%), hypertension (5%), venous thromboembolic event (7%), arterial
460 thromboembolic event (3%), wound-healing complications (3%), proteinuria (1%), and
461 gastrointestinal perforation (2%).

462 *Metastatic Renal Cell Carcinoma (mRCC)*

463 All grade adverse events were collected in Study 8. Grade 3–5 adverse events occurring at a
464 higher incidence ($\geq 2\%$) in 337 patients receiving interferon alfa (IFN- α) plus Avastin compared to
465 304 patients receiving IFN- α plus placebo arm were fatigue (13% vs. 8%), asthenia (10% vs. 7%),
466 proteinuria (7% vs. 0%), hypertension (6% vs. 1%; including hypertension and hypertensive crisis),
467 and hemorrhage (3% vs. 0.3%; including epistaxis, small intestinal hemorrhage, aneurysm ruptured,
468 gastric ulcer hemorrhage, gingival bleeding, haemoptysis, hemorrhage intracranial, large intestinal
469 hemorrhage, respiratory tract hemorrhage, and traumatic hematoma).

470 Grade 1–5 adverse events occurring at a higher incidence ($\geq 5\%$) in patients receiving IFN- α plus
471 Avastin compared to the IFN- α plus placebo arm are presented in Table 3.

472

Table 3

NCI-CTC Grades 1–5 Adverse Events in Study 8 (Occurring at Higher Incidence [$\geq 5\%$] in IFN- α + Avastin vs. IFN- α + Placebo)

| System Organ Class/Preferred term ^a | IFN- α + Placebo (n = 304) | IFN- α + Avastin (n = 337) |
|---|---|---|
| <u>Gastrointestinal disorders</u> | | |
| Diarrhea | 16% | 21% |
| <u>General disorders and administration site conditions</u> | | |
| Fatigue | 27% | 33% |
| <u>Investigations</u> | | |
| Weight decreased | 15% | 20% |
| <u>Metabolism and nutrition disorders</u> | | |
| Anorexia | 31% | 36% |
| <u>Musculoskeletal and connective tissue disorders</u> | | |
| Myalgia | 14% | 19% |
| Back pain | 6% | 12% |
| <u>Nervous system disorders</u> | | |
| Headache | 16% | 24% |
| <u>Renal and urinary disorders</u> | | |
| Proteinuria | 3% | 20% |
| <u>Respiratory, thoracic and mediastinal disorders</u> | | |
| Epistaxis | 4% | 27% |
| Dysphonia | 0% | 5% |
| <u>Vascular disorders</u> | | |
| Hypertension | 9% | 28% |

^a Adverse events were encoded using MedDRA, Version 10.1.

The following adverse events were reported at a 5-fold greater incidence in the IFN- α plus Avastin arm compared to IFN- α alone and not represented in Table 3: gingival bleeding (13 patients vs. 1 patient); rhinitis (9 vs. 0); blurred vision (8 vs. 0); gingivitis (8 vs. 1); gastroesophageal reflux disease (8 vs. 1); tinnitus (7 vs. 1); tooth abscess (7 vs. 0); mouth ulceration (6 vs. 0); acne (5 vs. 0); deafness (5 vs. 0); gastritis (5 vs. 0); gingival pain (5 vs. 0) and pulmonary embolism (5 vs. 1).

Persistent, Recurrent, or Metastatic Carcinoma of the Cervix

All grade adverse reactions were collected in Study 9.

Grade 1-4 adverse reactions occurring where the incidence difference is $\geq 5\%$ in patients receiving Avastin plus chemotherapy compared to chemotherapy alone are presented in Table 4.

Table 4

NCI-CTC Grades 1-4 and 3-4 Adverse Reactions in
Study 9

(Incidence Difference of $\geq 5\%$ Between Treatment Arms)

in Chemo + Avastin vs. Chemo Alone)

| | Grade 1-4 reactions | | Grade 3-4 reactions | |
|---|------------------------|--------------------------|------------------------|--------------------------|
| | Chemo Alone (n=222) | Chemo+Avastin (n=218) | Chemo Alone (n=222) | Chemo+Avastin (n=218) |
| <u>Metabolism and Nutrition Disorders</u> | | | | |
| Decreased Appetite | 26% | 34% | | |
| Hyperglycemia | 19% | 26% | | |
| Hypomagnesemia | 15% | 24% | | |
| Hyponatremia | 10% | 19% | | |
| Hypoalbuminemia | 11% | 16% | | |
| <u>General Disorders and Administration Site Conditions</u> | | | | |
| Fatigue | 75% | 80% | | |
| Edema Peripheral | 22% | 15% | | |
| <u>Investigations</u> | | | | |
| Weight Decreased | 7% | 21% | | |
| Blood Creatinine Increased | 10% | 16% | | |
| <u>Infections and Infestations</u> | | | | |
| Urinary Tract Infection | 14% | 22% | | |
| Infection | 5% | 10% | | |
| <u>Vascular Disorders</u> | | | | |
| Hypertension | 6% | 29% | 0.5% | 11.5% |
| Thrombosis | 3% | 10% | 2.7% | 8.3% |
| <u>Nervous System Disorders</u> | | | | |
| Headache | 13% | 22% | | |
| Dysarthria | 1% | 8% | | |
| <u>Gastrointestinal Disorders</u> | | | | |
| Stomatitis | 10% | 15% | | |
| Proctalgia | 1% | 6% | | |
| Anal Fistula | — | 6% | | |
| <u>Blood and Lymphatic System Disorders</u> | | | | |
| Neutropenia | 6% | 12% | | |
| Lymphopenia | 5% | 12% | | |
| <u>Psychiatric Disorders</u> | | | | |
| Anxiety | 10% | 17% | | |
| <u>Reproductive System and Breast Disorders</u> | | | | |
| Pelvic Pain | 8% | 14% | | |
| <u>Respiratory, Thoracic and Mediastinal Disorders</u> | | | | |
| Epistaxis | 1% | 17% | | |
| <u>Renal and Urinary Disorders</u> | | | | |
| Proteinuria | 3% | 10% | | |

Grade 3 or 4 adverse reactions occurring at a higher incidence ($\geq 2\%$) in 218 patients receiving chemotherapy plus Avastin compared to 222 patients receiving chemotherapy alone were abdominal pain (11.9% vs. 9.9%), diarrhea (5.5% vs. 2.7%), anal fistula (3.7% vs. 0%), proctalgia (2.8% vs.

488 0%), urinary tract infection 8.3% vs. 6.3%), cellulitis (3.2% vs. 0.5%), fatigue (14.2% vs. 9.9%),
489 hypokalemia (7.3% vs. 4.5%), hyponatremia (3.7% vs. 1.4%), dehydration (4.1% vs. 0.5%),
490 neutropenia (7.8% vs. 4.1%), lymphopenia (6.0% vs. 3.2%), back pain (5.5% vs. 3.2%), and pelvic
491 pain (5.5% vs. 1.4%).
492

493 There were no Grade 5 adverse reactions occurring at a higher incidence ($\geq 2\%$) in patients
494 receiving chemotherapy plus Avastin compared to patients receiving chemotherapy alone.
495

6.2 Immunogenicity

As with all therapeutic proteins, there is a potential for an immune response to Avastin.

In clinical trials of adjuvant colon carcinoma, 14 of 2233 evaluable patients (0.63%) tested positive for treatment-emergent anti-bevacizumab antibodies detected by an electrochemiluminescent (ECL) based assay. Among these 14 patients, three tested positive for neutralizing antibodies against bevacizumab using an enzyme-linked immunosorbent assay (ELISA). The clinical significance of these anti-product antibody responses to bevacizumab is unknown.

Immunogenicity assay results are highly dependent on the sensitivity and specificity of the test method and may be influenced by several factors, including sample handling, timing of sample collection, concomitant medications, and underlying disease. For these reasons, comparison of the incidence of antibodies to Avastin with the incidence of antibodies to other products may be misleading.

6.3 Postmarketing Experience

The following adverse reactions have been identified during post-approval use of Avastin. Because these reactions are reported voluntarily from a population of uncertain size, it is not always possible to reliably estimate their frequency or establish a causal relationship to drug exposure.

Body as a Whole: Polyserositis

Cardiovascular: Pulmonary hypertension, PRES, Mesenteric venous occlusion

Eye disorders (from unapproved intravitreal use for treatment of various ocular disorders):

Permanent loss of vision; Endophthalmitis (infectious and sterile); Intraocular inflammation; Retinal detachment; Increased intraocular pressure; Hemorrhage including conjunctival, vitreous

hemorrhage or retinal hemorrhage; Vitreous floaters; Ocular hyperemia; Ocular pain or discomfort

Gastrointestinal: Gastrointestinal ulcer, Intestinal necrosis, Anastomotic ulceration

Hemic and lymphatic: Pancytopenia

Hepatobiliary disorders: Gallbladder perforation

Infections and infestations: Necrotizing fasciitis, usually secondary to wound healing complications, gastrointestinal perforation or fistula formation

Musculoskeletal: Osteonecrosis of the jaw

Renal: Renal thrombotic microangiopathy (manifested as severe proteinuria)

Respiratory: Nasal septum perforation, dysphonia

Systemic Events (from unapproved intravitreal use for treatment of various ocular disorders):

Arterial thromboembolic events, Hypertension, Gastrointestinal perforation, Hemorrhage

7 DRUG INTERACTIONS

A drug interaction study was performed in which irinotecan was administered as part of the FOLFIRI regimen with or without Avastin. The results demonstrated no significant effect of bevacizumab on the pharmacokinetics of irinotecan or its active metabolite SN38.

In a randomized study in 99 patients with NSCLC, based on limited data, there did not appear to be a difference in the mean exposure of either carboplatin or paclitaxel when each was administered alone or in combination with Avastin. However, 3 of the 8 patients receiving Avastin plus paclitaxel/carboplatin had substantially lower paclitaxel exposure after four cycles of treatment (at Day 63) than those at Day 0, while patients receiving paclitaxel/carboplatin without Avastin had a greater paclitaxel exposure at Day 63 than at Day 0.

In Study 8, there was no difference in the mean exposure of interferon alfa administered in combination with Avastin when compared to interferon alfa alone.

8 USE IN SPECIFIC POPULATIONS

8.1 Pregnancy

Pregnancy Category C

There are no adequate or well controlled studies of bevacizumab in pregnant women. While it is not known if bevacizumab crosses the placenta, human IgG is known to cross the placenta. Reproduction studies in rabbits treated with approximately 1 to 12 times the recommended human dose of bevacizumab demonstrated teratogenicity, including an increased incidence of specific gross and skeletal fetal alterations. Adverse fetal outcomes were observed at all doses tested. Other observed effects included decreases in maternal and fetal body weights and an increased number of fetal resorptions. [See *Nonclinical Toxicology* (13.3).]

Because of the observed teratogenic effects of bevacizumab in animals and of other inhibitors of angiogenesis in humans, bevacizumab should be used during pregnancy only if the potential benefit to the pregnant woman justifies the potential risk to the fetus.

8.3 Nursing Mothers

It is not known whether Avastin is secreted in human milk. Human IgG is excreted in human milk, but published data suggest that breast milk antibodies do not enter the neonatal and infant circulation in substantial amounts. Because many drugs are secreted in human milk and because of the potential for serious adverse reactions in nursing infants from bevacizumab, a decision should be made whether to discontinue nursing or discontinue drug, taking into account the half-life of the bevacizumab (approximately 20 days [range 11–50 days]) and the importance of the drug to the mother. [See *Clinical Pharmacology* (12.3).]

8.4 Pediatric Use

The safety, effectiveness and pharmacokinetic profile of Avastin in pediatric patients have not been established.

Antitumor activity was not observed among eight children with relapsed glioblastoma treated with bevacizumab and irinotecan. There is insufficient information to determine the safety and efficacy of Avastin in children with glioblastoma.

Juvenile cynomolgus monkeys with open growth plates exhibited physeal dysplasia following 4 to 26 weeks exposure at 0.4 to 20 times the recommended human dose (based on mg/kg and exposure). The incidence and severity of physeal dysplasia were dose-related and were partially reversible upon cessation of treatment.

8.5 Geriatric Use

In Study 1, severe adverse events that occurred at a higher incidence ($\geq 2\%$) in patients aged ≥ 65 years as compared to younger patients were asthenia, sepsis, deep thrombophlebitis, hypertension, hypotension, myocardial infarction, congestive heart failure, diarrhea, constipation, anorexia, leukopenia, anemia, dehydration, hypokalemia, and hyponatremia. The effect of Avastin on overall survival was similar in elderly patients as compared to younger patients.

In Study 2, patients aged ≥ 65 years receiving Avastin plus FOLFOX4 had a greater relative risk as compared to younger patients for the following adverse events: nausea, emesis, ileus, and fatigue.

In Study 5, patients aged ≥ 65 years receiving carboplatin, paclitaxel, and Avastin had a greater relative risk for proteinuria as compared to younger patients. [See *Warnings and Precautions* (5.8).]

Of the 742 patients enrolled in Genentech-sponsored clinical studies in which all adverse events were captured, 212 (29%) were age 65 or older and 43 (6%) were age 75 or older. Adverse events of any severity that occurred at a higher incidence in the elderly as compared to younger patients, in addition to those described above, were dyspepsia, gastrointestinal hemorrhage, edema, epistaxis, increased cough, and voice alteration.

In an exploratory, pooled analysis of 1745 patients treated in five randomized, controlled studies, there were 618 (35%) patients aged ≥ 65 years and 1127 patients < 65 years of age. The overall

incidence of arterial thromboembolic events was increased in all patients receiving Avastin with chemotherapy as compared to those receiving chemotherapy alone, regardless of age. However, the increase in arterial thromboembolic events incidence was greater in patients aged ≥ 65 years (8.5% vs. 2.9%) as compared to those < 65 years (2.1% vs. 1.4%). [See *Warnings and Precautions* (5.5).]

8.6 Females of Reproductive Potential

Avastin increases the risk of ovarian failure and may impair fertility. Inform females of reproductive potential of the risk of ovarian failure prior to starting treatment with Avastin. Long term effects of Avastin exposure on fertility are unknown.

In a prospectively designed substudy of 179 premenopausal women randomized to receive chemotherapy with or without Avastin, the incidence of ovarian failure was higher in the Avastin arm (34%) compared to the control arm (2%). After discontinuation of Avastin and chemotherapy, recovery of ovarian function occurred in 22% (7/32) of these Avastin-treated patients. [See *Warnings and Precautions* (5.11), *Adverse Reactions* (6.1).]

10 OVERDOSAGE

The highest dose tested in humans (20 mg/kg IV) was associated with headache in nine of 16 patients and with severe headache in three of 16 patients.

11 DESCRIPTION

Avastin (bevacizumab) is a recombinant humanized monoclonal IgG1 antibody that binds to and inhibits the biologic activity of human vascular endothelial growth factor (VEGF) in *in vitro* and *in vivo* assay systems. Bevacizumab contains human framework regions and the complementarity-determining regions of a murine antibody that binds to VEGF. Avastin has an approximate molecular weight of 149 kD. Bevacizumab is produced in a mammalian cell (Chinese Hamster Ovary) expression system in a nutrient medium containing the antibiotic gentamicin. Gentamicin is not detectable in the final product.

Avastin is a clear to slightly opalescent, colorless to pale brown, sterile, pH 6.2 solution for intravenous infusion. Avastin is supplied in 100 mg and 400 mg preservative-free, single-use vials to deliver 4 mL or 16 mL of Avastin (25 mg/mL). The 100 mg product is formulated in 240 mg α, α -trehalose dihydrate, 23.2 mg sodium phosphate (monobasic, monohydrate), 4.8 mg sodium phosphate (dibasic, anhydrous), 1.6 mg polysorbate 20, and Water for Injection, USP. The 400 mg product is formulated in 960 mg α, α -trehalose dihydrate, 92.8 mg sodium phosphate (monobasic, monohydrate), 19.2 mg sodium phosphate (dibasic, anhydrous), 6.4 mg polysorbate 20, and Water for Injection, USP.

12 CLINICAL PHARMACOLOGY

12.1 Mechanism of Action

Bevacizumab binds VEGF and prevents the interaction of VEGF to its receptors (Flt-1 and KDR) on the surface of endothelial cells. The interaction of VEGF with its receptors leads to endothelial cell proliferation and new blood vessel formation in *in vitro* models of angiogenesis. Administration of bevacizumab to xenotransplant models of colon cancer in nude (athymic) mice caused reduction of microvascular growth and inhibition of metastatic disease progression.

12.3 Pharmacokinetics

The pharmacokinetic profile of bevacizumab was assessed using an assay that measures total serum bevacizumab concentrations (i.e., the assay did not distinguish between free bevacizumab and bevacizumab bound to VEGF ligand). Based on a population pharmacokinetic analysis of 491 patients who received 1 to 20 mg/kg of Avastin weekly, every 2 weeks, or every 3 weeks, the estimated half-life of bevacizumab was approximately 20 days (range 11–50 days). The predicted

time to reach steady state was 100 days. The accumulation ratio following a dose of 10 mg/kg of bevacizumab every 2 weeks was 2.8.

The clearance of bevacizumab varied by body weight, gender, and tumor burden. After correcting for body weight, males had a higher bevacizumab clearance (0.262 L/day vs. 0.207 L/day) and a larger V_c (3.25 L vs. 2.66 L) than females. Patients with higher tumor burden (at or above median value of tumor surface area) had a higher bevacizumab clearance (0.249 L/day vs. 0.199 L/day) than patients with tumor burdens below the median. In Study 1, there was no evidence of lesser efficacy (hazard ratio for overall survival) in males or patients with higher tumor burden treated with Avastin as compared to females and patients with low tumor burden. The relationship between bevacizumab exposure and clinical outcomes has not been explored.

13 NONCLINICAL TOXICOLOGY

13.1 Carcinogenesis, Mutagenesis, Impairment of Fertility

No carcinogenicity or mutagenicity studies of bevacizumab have been conducted.

Bevacizumab may impair fertility. Female cynomolgus monkeys treated with 0.4 to 20 times the recommended human dose of bevacizumab exhibited arrested follicular development or absent corpora lutea as well as dose-related decreases in ovarian and uterine weights, endometrial proliferation, and the number of menstrual cycles. Following a 4- or 12-week recovery period, there was a trend suggestive of reversibility. After the 12-week recovery period, follicular maturation arrest was no longer observed, but ovarian weights were still moderately decreased. Reduced endometrial proliferation was no longer observed at the 12-week recovery time point; however, decreased uterine weight, absent corpora lutea, and reduced number of menstrual cycles remained evident.

13.2 Animal Toxicology and/or Pharmacology

In cynomolgus monkeys, when bevacizumab was administered at doses of 0.4 to 20 times the weekly human exposure, anatomical pathology revealed several adverse effects on general growth and skeletal development, fertility and wound healing capacity. Severe physeal dysplasia was consistently reported in juvenile monkeys with open growth plates receiving 0.4 to 20 times the human dose. The physeal dysplasia was characterized by a linear cessation of growth line and chondrocyte hyperplasia which did not completely resolve after the 4 to 12 weeks recovery period without drug exposure.

Rabbits dosed with bevacizumab exhibited reduced wound healing capacity. Using full-thickness skin incision and partial thickness circular dermal wound models, bevacizumab dosing resulted in reductions in wound tensile strength, decreased granulation and re-epithelialization, and delayed time to wound closure.

13.3 Reproductive and Developmental Toxicology

Pregnant rabbits dosed with 1 to 12 times the human dose of bevacizumab every three days during the period of organogenesis (gestation day 6–18) exhibited teratogenic effects, decreases in maternal and fetal body weights, and increased number of fetal resorptions. Teratogenic effects included: reduced or irregular ossification in the skull, jaw, spine, ribs, tibia and bones of the paws; meningocele; fontanel, rib and hindlimb deformities; corneal opacity; and absent hindlimb phalanges. There are no data available regarding the level of bevacizumab exposure in the offspring.

14 CLINICAL STUDIES

14.1 Metastatic Colorectal Cancer (mCRC)

Study 1

In this double-blind, active-controlled study, patients were randomized (1:1:1) to IV bolus-IFL (irinotecan 125 mg/m², 5-FU 500 mg/m², and leucovorin (LV) 20 mg/m² given once weekly for

686 4 weeks every 6 weeks) plus placebo (Arm 1), bolus-IFL plus Avastin (5 mg/kg every 2 weeks)
687 (Arm 2), or 5-FU/LV plus Avastin (5 mg/kg every 2 weeks) (Arm 3). Enrollment in Arm 3 was
688 discontinued, as pre-specified, when the toxicity of Avastin in combination with the bolus-IFL
689 regimen was deemed acceptable. The main outcome measure was overall survival (OS).
690 Of the 813 patients randomized to Arms 1 and 2, the median age was 60, 40% were female, 79%
691 were Caucasian, 57% had an ECOG performance status of 0, 21% had a rectal primary and 28%
692 received prior adjuvant chemotherapy. In 56% of the patients, the dominant site of disease was
693 extra-abdominal, while the liver was the dominant site in 38% of patients.
694 The addition of Avastin resulted in an improvement in survival across subgroups defined by age
695 (<65 yrs, ≥65 yrs) and gender. Results are presented in Table 5 and Figure 1.
696

Table 5
Study 1 Efficacy Results

| | IFL + Placebo | IFL + Avastin 5 mg/kg q 2 wks |
|--|---------------|----------------------------------|
| Number of Patients | 411 | 402 |
| <u>Overall Survival^a</u> | | |
| Median (months) | 15.6 | 20.3 |
| Hazard ratio | | 0.66 |
| <u>Progression-free Survival^a</u> | | |
| Median (months) | 6.2 | 10.6 |
| Hazard ratio | | 0.54 |
| <u>Overall Response Rate^b</u> | | |
| Rate (percent) | 35% | 45% |
| <u>Duration of Response</u> | | |
| Median (months) | 7.1 | 10.4 |

^a p<0.001 by stratified log rank test.

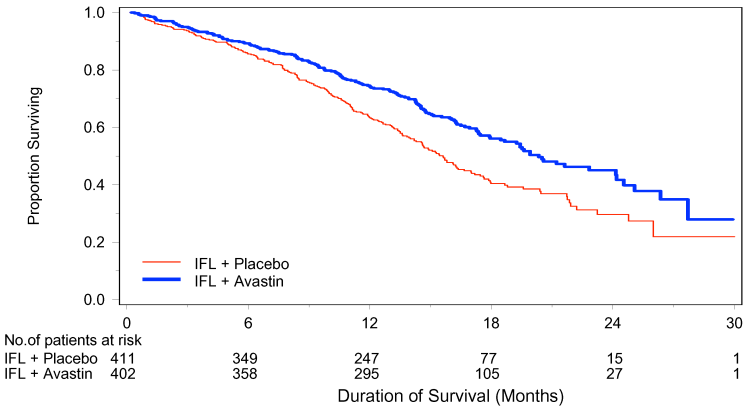
^b p<0.01 by χ^2 test.

697

698

699

Figure 1
Duration of Survival in Study 1



700

701

Among the 110 patients enrolled in Arm 3, median OS was 18.3 months, median progression-free survival (PFS) was 8.8 months, objective response rate (ORR) was 39%, and median duration of response was 8.5 months.

Study 2

Study 2 was a randomized, open-label, active-controlled trial in patients who were previously treated with irinotecan ± 5-FU for initial therapy for metastatic disease or as adjuvant therapy. Patients were randomized (1:1:1) to IV FOLFOX4 (Day 1: oxaliplatin 85 mg/m² and LV 200 mg/m² concurrently, then 5-FU 400 mg/m² bolus followed by 600 mg/m² continuously; Day 2: LV 200 mg/m², then 5-FU 400 mg/m² bolus followed by 600 mg/m² continuously; repeated every 2 weeks), FOLFOX4 plus Avastin (10 mg/kg every 2 weeks prior to FOLFOX4 on Day 1), or Avastin monotherapy (10 mg/kg every 2 weeks). The main outcome measure was OS.

The Avastin monotherapy arm was closed to accrual after enrollment of 244 of the planned 290 patients following a planned interim analysis by the data monitoring committee based on evidence of decreased survival compared to FOLFOX4 alone.

Of the 829 patients randomized to the three arms, the median age was 61 years, 40% were female, 87% were Caucasian, 49% had an ECOG performance status of 0, 26% received prior radiation therapy, and 80% received prior adjuvant chemotherapy, 99% received prior irinotecan, with or without 5-FU as therapy for metastatic disease, and 1% received prior irinotecan and 5-FU as adjuvant therapy.

The addition of Avastin to FOLFOX4 resulted in significantly longer survival as compared to FOLFOX4 alone (median OS 13.0 months vs. 10.8 months; hazard ratio 0.75 [95% CI 0.63, 0.89], $p=0.001$ stratified log rank test) with clinical benefit seen in subgroups defined by age (<65 yrs, ≥65 yrs) and gender. PFS and ORR based on investigator assessment were higher in the Avastin plus FOLFOX4 arm.

Study 3

The activity of Avastin in combination with bolus or infusional 5-FU/LV was evaluated in a single arm study enrolling 339 patients with mCRC with disease progression following both irinotecan- and oxaliplatin-containing chemotherapy regimens. Seventy-three percent of patients received concurrent bolus 5-FU/LV. One objective partial response was verified in the first 100 evaluable patients for an overall response rate of 1% (95% CI 0–5.5%).

Study 4

Study 4 was a prospective, randomized, open-label, multinational, controlled trial in patients with histologically confirmed metastatic colorectal cancer who had progressed on a first-line Avastin containing regimen. Patients were excluded if they progressed within 3 months of initiating first-line chemotherapy and if they received Avastin for less than 3 consecutive months in the first-line setting.

Patients were randomized (1:1) within 3 months after discontinuation of Avastin as first-line therapy to receive fluoropyrimidine/oxaliplatin- or fluoropyrimidine/irinotecan-based chemotherapy with or without Avastin administered at 5 mg/kg every 2 weeks or 7.5 mg/kg every 3 weeks. The choice of second line therapy was contingent upon first-line chemotherapy treatment. Second-line treatment was administered until progressive disease or unacceptable toxicity. The main outcome measure was OS defined as the time from randomization until death from any cause.

Of the 820 patients randomized, the majority of patients were male (64%) and the median age was 63.0 years (range 21 to 84 years). At baseline, 52% of patients were ECOG performance status (PS) 1, 44% were ECOG PS 0, 58% received irinotecan-based therapy as first-line treatment, 55% progressed on first-line treatment within 9 months, and 77% received their last dose of Avastin as first-line treatment within 42 days of being randomized. Second-line chemotherapy regimens were generally balanced between each treatment arm.

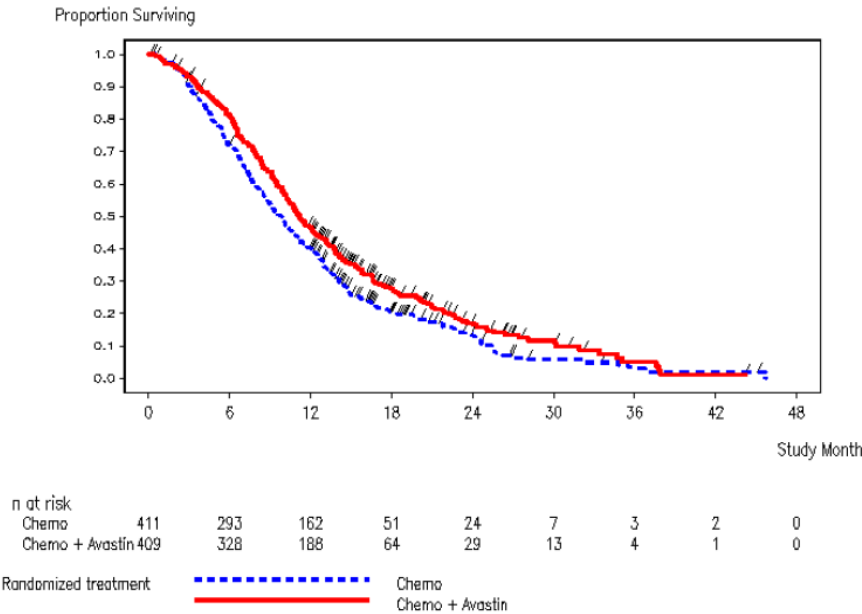
750 The addition of Avastin to fluoropyrimidine-based chemotherapy resulted in a statistically
751 significant prolongation of survival and PFS; there was no significant difference in overall response
752 rate, a key secondary outcome measure. Results are presented in Table 6 and Figure 2.

753
754 **Table 6**
755 Study 4 Efficacy Results
756

| | Chemotherapy | Avastin + Chemotherapy |
|--|-------------------|------------------------|
| Number of Patients | 411 | 409 |
| Overall Survival^a | | |
| Median (months) | 9.8 | 11.2 |
| Hazard ratio (95% CI) | 0.81 (0.69, 0.94) | |
| Progression-Free Survival^b | | |
| Median (months) | 4.0 | 5.7 |
| Hazard ratio (95% CI) | 0.68 (0.59, 0.78) | |

^a p = 0.0057 by unstratified log rank test.
^b p-value < 0.0001 by unstratified log rank test.

757
758 **Figure 2**
759 Duration of Survival in Study 4



760
761
762 **14.2 Lack of Efficacy in Adjuvant Treatment of Colon Cancer**

763 Lack of efficacy of Avastin as an adjunct to standard chemotherapy for the adjuvant treatment of
764 colon cancer was determined in two randomized, open-label, multicenter clinical trials.

765 The first study conducted in 3451 patients with high risk stage II and III colon cancer, who had
766 undergone surgery for colon cancer with curative intent, was a 3-arm study of Avastin administered
767 at a dose equivalent to 2.5 mg/kg/week on either a 2-weekly schedule in combination with
768 FOLFOX4, or on a 3-weekly schedule in combination with XELOX and FOLFOX4 alone. Patients
769 were randomized as follows: 1151 patients to FOLFOX4 arm, 1155 to FOLFOX4 plus Avastin arm,

and 1145 to XELOX plus Avastin arm. The median age was 58 years, 54% were male, 84% were Caucasian and 29% were \geq age 65. Eighty-three percent had stage III disease.

The main efficacy outcome of the study was disease free survival (DFS) in patients with stage III colon cancer. Addition of Avastin to chemotherapy did not improve DFS. As compared to the control arm, the proportion of stage III patients with disease recurrence or with death due to disease progression were numerically higher in the FOLFOX4 plus Avastin and in the XELOX plus Avastin arms. The hazard ratios for DFS were 1.17 (95% CI: 0.98–1.39) for the FOLFOX4 plus Avastin versus FOLFOX4 and 1.07 (95% CI: 0.90–1.28) for the XELOX plus Avastin versus FOLFOX4. The hazard ratios for overall survival were 1.31 (95% CI=1.03, 1.67) and 1.27 (95% CI=1.00, 1.62) for the comparison of Avastin plus FOLFOX4 versus FOLFOX4 and Avastin plus XELOX versus FOLFOX4, respectively. Similar lack of efficacy for DFS were observed in the Avastin-containing arms compared to control in the high-risk stage II cohort.

In a second study, 2710 patients with stage II and III colon cancer who had undergone surgery with curative intent, were randomized to receive either Avastin administered at a dose equivalent to 2.5 mg/kg/week in combination with mFOLFOX6 (N=1354) or mFOLFOX6 alone (N=1356). The median age was 57 years, 50% were male and 87% Caucasian. Seventy-five percent had stage III disease. The main efficacy outcome was DFS among stage III patients. The hazard ratio for DFS was 0.92 (95% CI: 0.77, 1.10). Overall survival, an additional efficacy outcome, was not significantly improved with the addition of Avastin to mFOLFOX6 (HR=0.96, 95% CI=[0.75,1.22]).

14.3 Unresectable Non-Squamous Non-Small Cell Lung Cancer (NSCLC)

Study 5

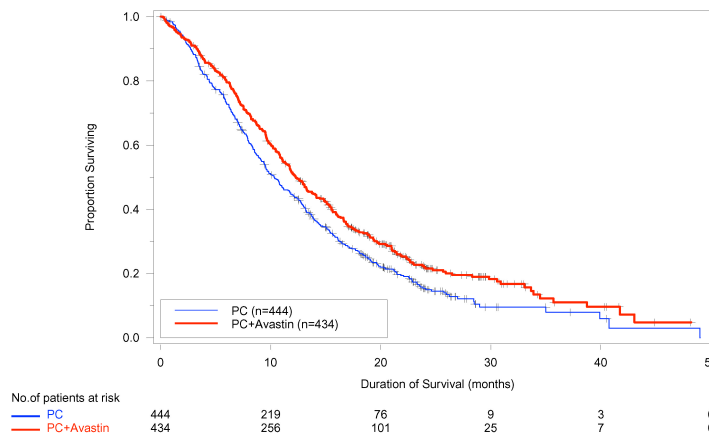
The safety and efficacy of Avastin as first-line treatment of patients with locally advanced, metastatic, or recurrent non-squamous NSCLC was studied in a single, large, randomized, active-controlled, open-label, multicenter study.

Chemotherapy-naïve patients with locally advanced, metastatic or recurrent non-squamous NSCLC were randomized (1:1) to receive six 21-day cycles of paclitaxel 200 mg/m² and carboplatin AUC=6.0, by IV on day 1 (PC) or PC in combination with Avastin 15 mg/kg by IV on day 1 (PC plus Avastin). After completion or upon discontinuation of chemotherapy, patients in the PC plus Avastin arm continued to receive Avastin alone until disease progression or until unacceptable toxicity. Patients with predominant squamous histology (mixed cell type tumors only), central nervous system (CNS) metastasis, gross hemoptysis (\geq 1/2 tsp of red blood), unstable angina, or receiving therapeutic anticoagulation were excluded. The main outcome measure was duration of survival.

Of the 878 patients randomized, the median age was 63, 46% were female, 43% were \geq age 65, and 28% had \geq 5% weight loss at study entry. Eleven percent had recurrent disease and of the 89% with newly diagnosed NSCLC, 12% had Stage IIIB with malignant pleural effusion and 76% had Stage IV disease.

The results are presented in Figure 3. OS was statistically significantly higher among patients receiving PC plus Avastin compared with those receiving PC alone; median OS was 12.3 months vs. 10.3 months [hazard ratio 0.80 (repeated 95% CI 0.68, 0.94), final p-value 0.013, stratified log-rank test]. Based on investigator assessment which was not independently verified, patients were reported to have longer PFS with Avastin in combination with PC compared to PC alone.

Figure 3
Duration of Survival in Study 5



In an exploratory analyses across patient subgroups, the impact of Avastin on OS was less robust in the following: women [HR = 0.99 (95% CI: 0.79, 1.25)], age ≥ 65 years [HR = 0.91 (95% CI: 0.72, 1.14)] and patients with $\geq 5\%$ weight loss at study entry [HR = 0.96 (95% CI: 0.73, 1.26)].

The safety and efficacy of Avastin in patients with locally advanced, metastatic or recurrent non-squamous NSCLC, who had not received prior chemotherapy was studied in another randomized, double-blind, placebo controlled, three-arm study of Avastin in combination with cisplatin and gemcitabine (CG) versus placebo and CG. A total of 1043 patients were randomized 1:1:1 to receive placebo plus CG, Avastin 7.5 mg/kg plus CG or Avastin 15.0 mg/kg plus CG. The median age was 58 years, 36% were female, and 29% were \geq age 65. Eight percent had recurrent disease and 77% had Stage IV disease. Progression-free survival, the main efficacy outcome measure, was significantly higher in both Avastin containing arms compared to the placebo arm [HR 0.75 (95% CI 0.62, 0.91), $p=0.0026$ for the Avastin 7.5 mg/kg plus CG arm and HR 0.82 (95% CI 0.68; 0.98), $p=0.0301$ for the Avastin 15.0 mg/kg plus CG arm]. The addition of Avastin to CG chemotherapy failed to demonstrate an improvement in the duration of overall survival, an additional efficacy outcome measure, [HR 0.93 (95% CI 0.78; 1.11), $p=0.4203$ for the Avastin 7.5 mg/kg plus CG arm and HR 1.03 (95% CI 0.86; 1.23), $p=0.7613$ for the Avastin 15.0 mg/kg plus CG arm].

14.4 Glioblastoma

Study 6

The efficacy and safety of Avastin was evaluated in Study 6, an open-label, multicenter, randomized, non-comparative study of patients with previously treated glioblastoma. Patients received Avastin (10 mg/kg IV) alone or Avastin plus irinotecan every 2 weeks until disease progression or until unacceptable toxicity. All patients received prior radiotherapy (completed at least 8 weeks prior to receiving Avastin) and temozolomide. Patients with active brain hemorrhage were excluded.

Of the 85 patients randomized to the Avastin arm, the median age was 54 years, 32% were female, 81% were in first relapse, Karnofsky performance status was 90–100 for 45% and 70–80 for 55%.

The efficacy of Avastin was demonstrated using response assessment based on both WHO radiographic criteria and by stable or decreasing corticosteroid use, which occurred in 25.9% (95% CI 17.0%, 36.1%) of the patients. Median duration of response was 4.2 months (95% CI 3.0, 5.7).

Radiologic assessment was based on MRI imaging (using T1 and T2/FLAIR). MRI does not necessarily distinguish between tumor, edema, and radiation necrosis.

Study 7

Study 7, was a single-arm, single institution trial with 56 patients with glioblastoma. All patients had documented disease progression after receiving temozolomide and radiation therapy. Patients received Avastin 10 mg/kg IV every 2 weeks until disease progression or unacceptable toxicity.

The median age was 54, 54% were male, 98% Caucasian, and 68% had a Karnofsky Performance Status of 90–100.

The efficacy of Avastin was supported by an objective response rate of 19.6% (95% CI 10.9%, 31.3%) using the same response criteria as in Study 6. Median duration of response was 3.9 months (95% CI 2.4, 17.4).

14.5 Metastatic Renal Cell Carcinoma (mRCC)

Study 8

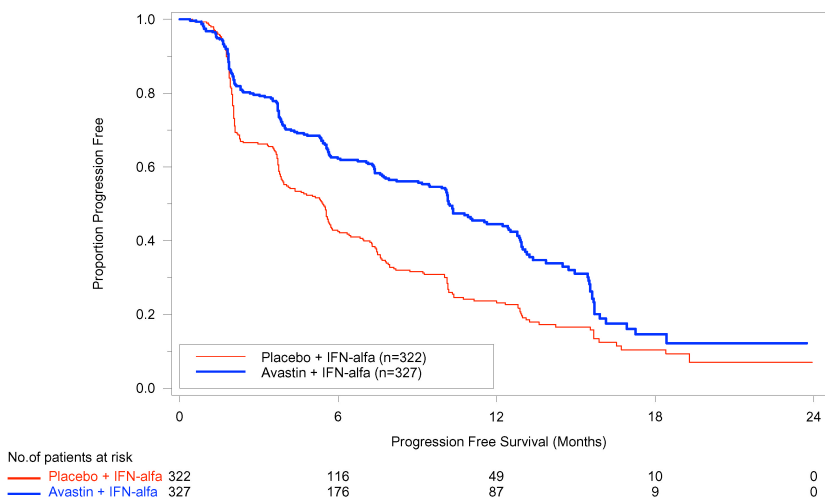
Patients with treatment-naïve mRCC were evaluated in a multicenter, randomized, double-blind, international study comparing Avastin plus interferon alfa 2a (IFN- α 2a) versus placebo plus IFN- α 2a. A total of 649 patients who had undergone a nephrectomy were randomized (1:1) to receive either Avastin (10 mg/kg IV infusion every 2 weeks; n=327) or placebo (IV every 2 weeks; n=322) in combination with IFN- α 2a (9 MIU subcutaneously three times weekly, for a maximum of 52 weeks). Patients were treated until disease progression or unacceptable toxicity. The main outcome measure of the study was investigator-assessed PFS. Secondary outcome measures were ORR and OS.

The median age was 60 years (range 18–82), 96% were white, and 70% were male. The study population was characterized by Motzer scores as follows: 28% favorable (0), 56% intermediate (1–2), 8% poor (3–5), and 7% missing.

The results are presented in Figure 4. PFS was statistically significantly prolonged among patients receiving Avastin plus IFN- α 2a compared to those receiving IFN- α 2a alone; median PFS was 10.2 months vs. 5.4 months [HR 0.60 (95% CI 0.49, 0.72), p-value <0.0001, stratified log-rank test]. Among the 595 patients with measurable disease, ORR was also significantly higher (30% vs. 12%, p <0.0001, stratified CMH test). There was no improvement in OS based on the final analysis conducted after 444 deaths, with a median OS of 23 months in the Avastin plus IFN- α 2a arm and 21 months in the IFN- α 2a plus placebo arm [HR 0.86, (95% CI 0.72, 1.04)].

880
881

Figure 4
Progression-Free Survival in Study 8



882

883 **14.6 Persistent, Recurrent, or Metastatic Carcinoma of the Cervix**

884 *Study 9*

885 Patients with persistent, recurrent, or metastatic carcinoma of the cervix were evaluated in a
886 randomized, four-arm, multi-center trial comparing Avastin plus chemotherapy versus chemotherapy alone.
887 A total of 452 patients were randomized (1:1:1:1) to receive paclitaxel and Cisplatin with or
888 without Avastin, or paclitaxel and topotecan with or without Avastin.

889

890 The dosing regimens for Avastin, Paclitaxel, Cisplatin and Topotecan were as follows:

891

- 892 • Day 1: Paclitaxel 135 mg/m² IV over 24 hours, Day 2: cisplatin 50 mg/m² IV plus Avastin;
893 or Day 1: paclitaxel 175 mg/m² IV over 3 hours, Day 2: cisplatin 50 mg/m² IV plus Avastin ;
894 or Day 1: paclitaxel 175 mg/m² IV over 3 hours plus cisplatin 50 mg/m² IV plus Avastin
- 895 • Day 1: Paclitaxel 175 mg/m² over 3 hours plus Avastin, Days 1-3: topotecan 0.75 mg/m²
896 over 30 minutes

897 Patients were treated until disease progression or unacceptable adverse events precluded further
898 therapy. The main outcome measure of the study was overall survival (OS). Response rate (ORR)
899 was a secondary outcome measure.

900 The median age was 48 years (range: 20–85). Of the 452 patients randomized at baseline, 78% of
901 patients were Caucasian, 80% had received prior radiation, 74% had received prior chemotherapy
902 concurrent with radiation, and 32% had a platinum-free interval of less than 6 months. Patients had
903 a GOG Performance Status (PS) of 0 (58%) or 1 (42%). Demographic and disease characteristics
904 were balanced across arms.

905

906 The study results for OS in patients who received chemotherapy plus Avastin as compared to
907 chemotherapy alone are presented in Table 7 and Figure 5.

908

Figure 5

erated1 20 1002 Kaplan-Meier Curve of Overall Survival by Bevacizumab Treatment

Analysis: INTENT TO TREAT POPULATION - BEV VS NON BEV



not at risk

| | | | | | | | | |
|-------------|-----|-----|-----|----|----|---|---|---|
| Chemo alone | 225 | 171 | 102 | 49 | 21 | 8 | 1 | 0 |
|-------------|-----|-----|-----|----|----|---|---|---|

Program : \$PROD\cdt3682\inl01230\erated1_20.sas / Output : \$PROD\cdt3682\01230\areports\erated1_20_1002.cgm
31OCT2013 17:31

Table 7
Study 9 Efficacy Results: Chemotherapy versus Chemotherapy + Avastin

| | Chemotherapy (n=225) | Chemotherapy + Avastin (n=227) |
|------------------------------|---|-----------------------------------|
| Overall Survival | | |
| Median (months) ^a | 12.9 | 16.8 |
| Hazard ratio [95% CI] | 0.74 [0.58;0.94] (p-value ^b = 0.0132) | |

^a Kaplan-Meier estimates.

^b log-rank test (stratified).

The overall response rate was also higher in patients who received chemotherapy plus Avastin [45% (95% CI: 39, 52)] than in patients who received chemotherapy alone [34% (95% CI: 28,40)].

Table 8**Study 9 Efficacy Results: Platinum Doublet versus Nonplatinum Doublet**

| | Topotecan + Paclitaxel +/- Avastin (n=223) | Cisplatin + Paclitaxel +/- Avastin (n=229) |
|------------------------------|--|--|
| Overall Survival | | |
| Median (months) ^a | 13.3 | 15.5 |
| Hazard ratio [95% CI] | 1.15 [0.91, 1.46] p-value=0.23 | |

^a Kaplan-Meier estimates.

The hazard ratio for OS with Cisplatin +Paclitaxel + Avastin as compared to Cisplatin +Paclitaxel alone was 0.72 (95% CI: 0.51,1.02). The hazard ratio for OS with Topotecan +Paclitaxel +Avastin as compared to Topotecan +Paclitaxel alone was 0.76 (95% CI: 0.55, 1.06).

16 HOW SUPPLIED/STORAGE AND HANDLING

Avastin vials [100 mg (NDC 50242-060-01) and 400 mg (NDC 50242-061-01)] are stable at 2–8°C (36–46°F). Avastin vials should be protected from light. **Do not freeze or shake.**

Diluted Avastin solutions may be stored at 2–8°C (36–46°F) for up to 8 hours. Store in the original carton until time of use. No incompatibilities between Avastin and polyvinylchloride or polyolefin bags have been observed.

17 PATIENT COUNSELING INFORMATION

Advise patients:

- To undergo routine blood pressure monitoring and to contact their health care provider if blood pressure is elevated.
- To immediately contact their health care provider for unusual bleeding, high fever, rigors, sudden onset of worsening neurological function, or persistent or severe abdominal pain, severe constipation, or vomiting.
- Of increased risk of wound healing complications during and following Avastin.
- Of increased risk of an arterial thromboembolic event.
- Of the potential risk to the fetus during and following Avastin and the need to continue adequate contraception for at least 6 months following last dose of Avastin.
- Of the increased risk for ovarian failure following Avastin treatment.

Avastin® (bevacizumab)

Manufactured by:

Genentech, Inc.

A Member of the Roche Group

1 DNA Way

South San Francisco, CA 94080-4990

Avastin® is a registered trademark of Genentech, Inc.

©2013 Genentech, Inc.