

Thanks for requesting these slides. Let's *CONNECT* on LinkedIn!

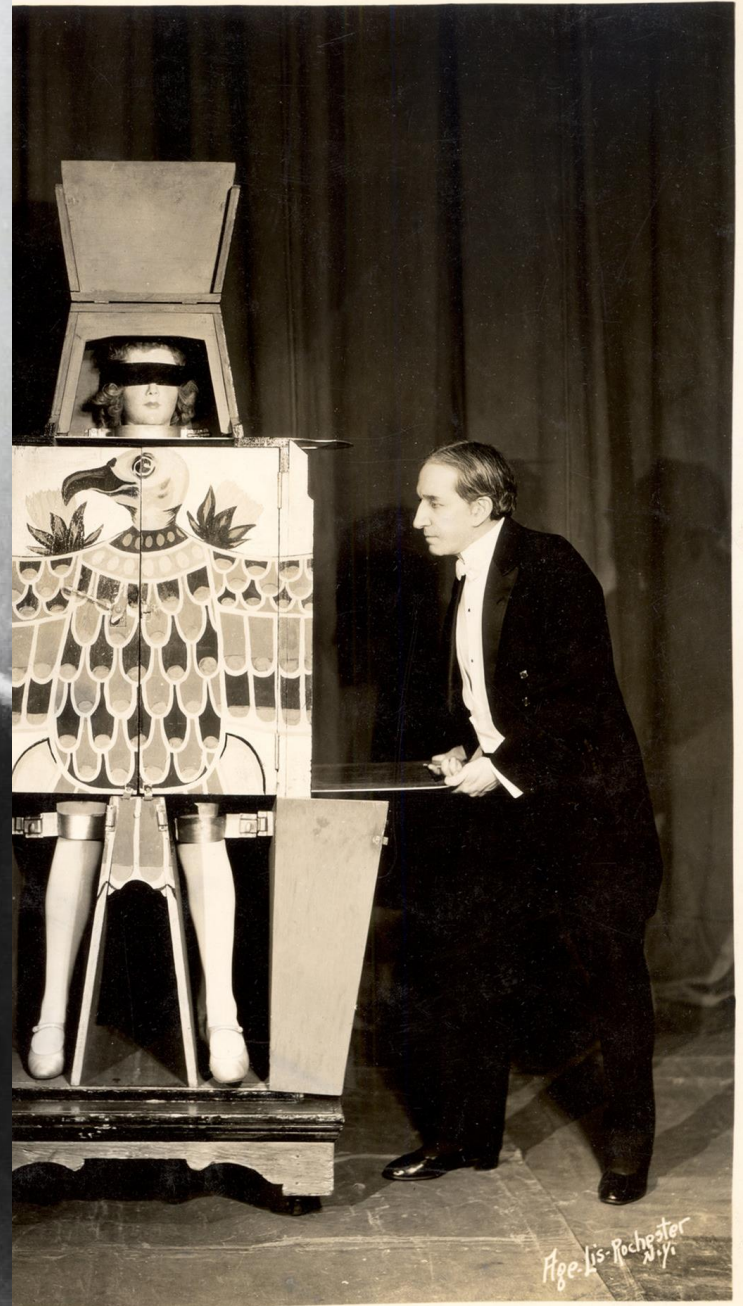


A screenshot of a LinkedIn profile for Tim David. The profile banner features a circular portrait of Tim David on the left and a promotional graphic on the right. The graphic includes the text "BECOME MORE INFLUENTIAL WITH THE MAGIC OF WORDS" and images of two books: "FLIP" and "MAGIC WORDS". Below the banner, the profile name "Tim David (He/Him)" is displayed, followed by his title "Keynote Speaker - The Magic of Human Connection: Your Advantage in a Digital Age" and a list of topics he discusses: "#influence, #workhuman, #humanconnection, and #communicationskills". His location is listed as "Lakeville, Massachusetts, United States" with a link to "Contact info". There is also a link to "Watch Tim Speak" and statistics showing "1,888 followers · 500+ connections". At the bottom of the profile section are three buttons: "Open to", "Add profile section", and "More". The banner also features logos for "Forbes", "Psychology Today", "The New York Times", "Inc.", and "TEDx".



EXIT

TIM DAVID





**“The conclusion of the study is that *connection* is the whole shooting match...**

**The more areas in your life you can make connection, *the better. Full stop.*”**

**George Vaillant** *Director of the  
Harvard Grant Study  
(1972-2003)*



“85% of your financial success is due to  
your personality  
and ability to **communicate, negotiate,**  
and **lead.**”

*Shockingly, only 15% is due to  
technical knowledge.”*

– Carnegie Institute of Technology

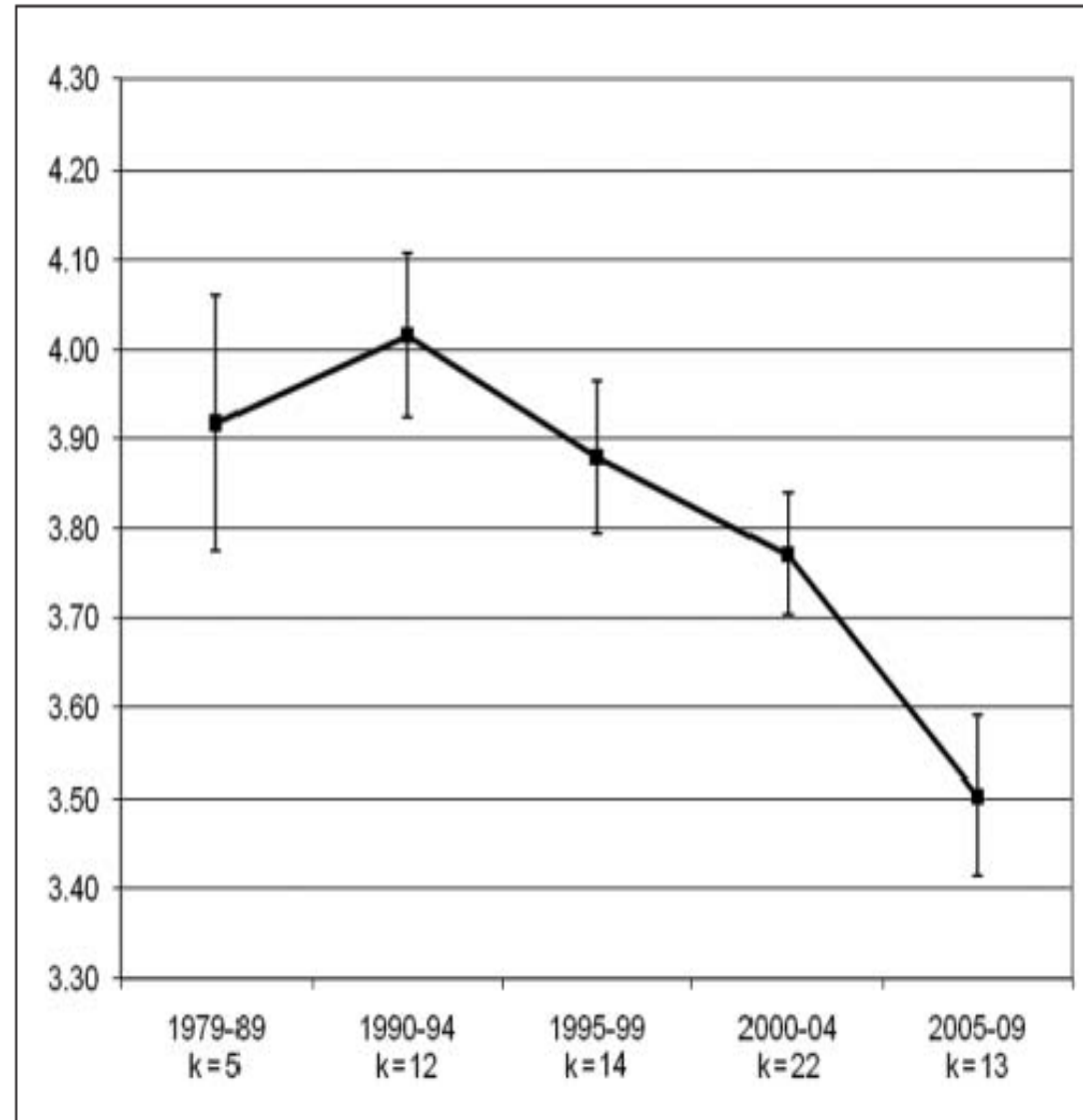
**“There is a .71 correlation between social connection and happiness...**

**That’s nearly twice as strong as the correlation between **smoking and cancer.**”**

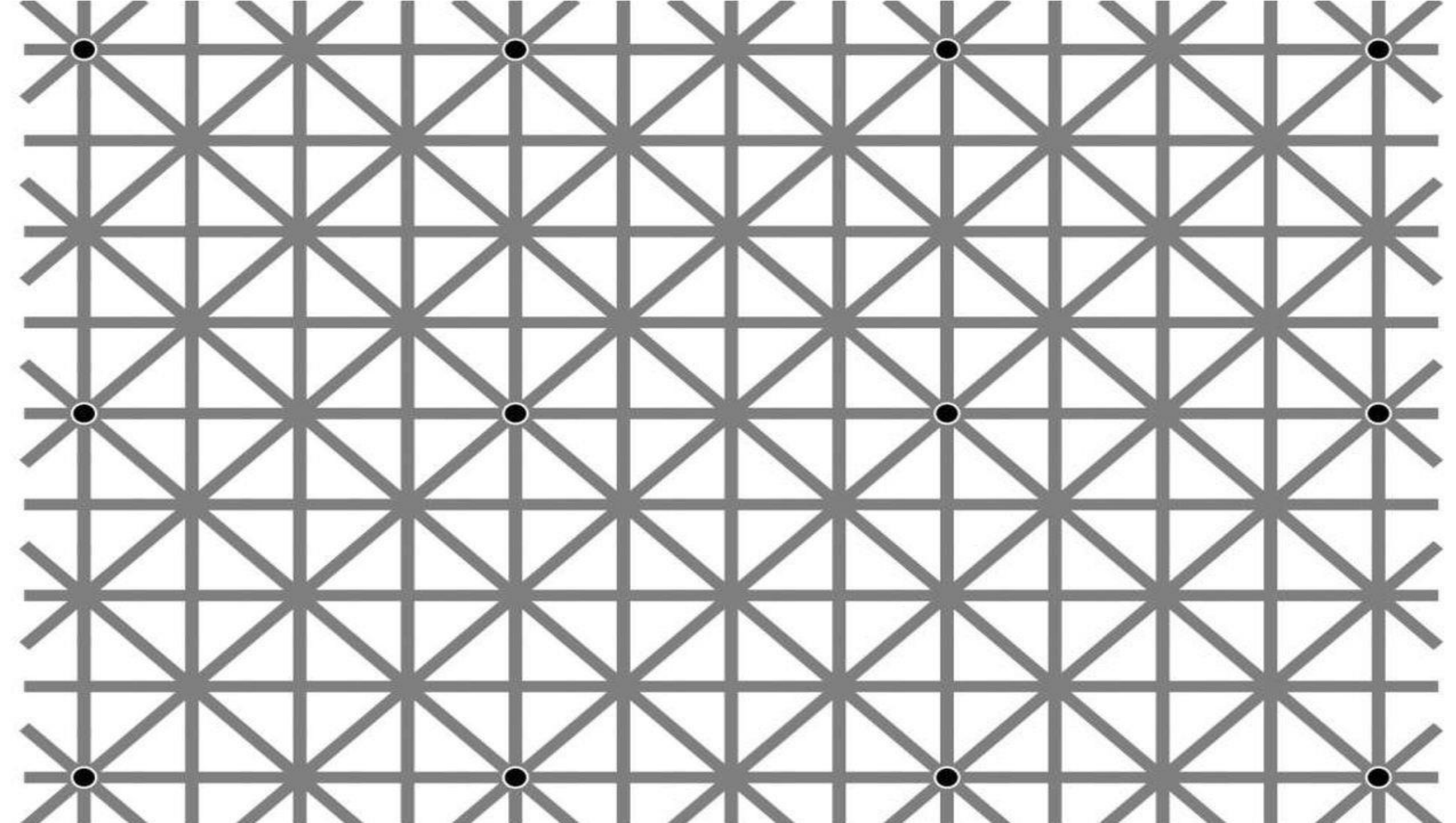
***Shawn Achor*** *Author of The Happiness Advantage*



# Human Empathy:













# I HATE the term, "Work/Life Balance"

They're not two opposing forces that need to cancel each other out.

**Fulfilling work is necessary for a happy life and a full life is necessary for successful work.**

We need to bring our lives - our passions, interests, and personalities – into our work if we're ever going to contribute anything meaningful.

Don't balance work/life. Instead, do your life's work.

It's not "just a paycheck," it's a third of your life.

*Live it.*



slido



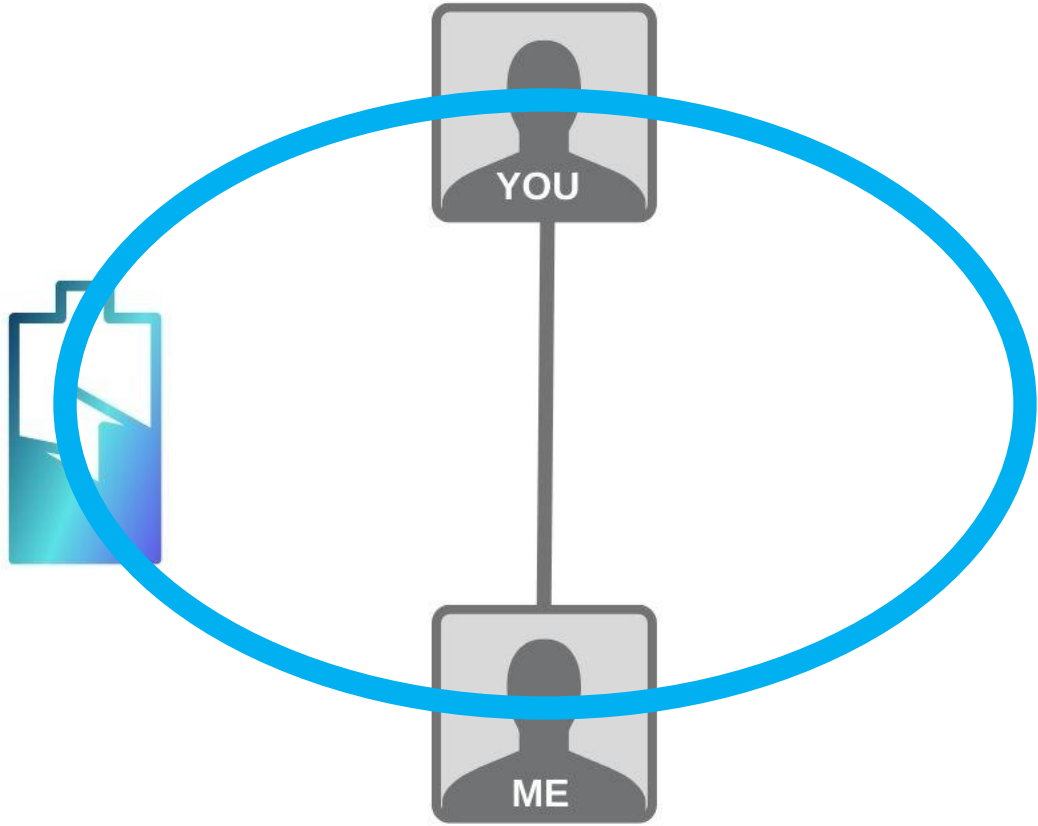
**If one Clydesdale can pull 2,000 lbs, then how many pounds can TWO Clydesdales pull (when properly hitched together?)**

ⓘ Start presenting to display the poll results on this slide.



**22,000 Pounds!**





**B***I*U

A ▾

T1 ▾



Dear Tim,

I'm the chair of the school committee and of the 37 surrounding towns and cities, 36 of them have completed major school renovations in the last few years. All except us. My town has not approved school building renovations in over 50 years. They're stubborn, set in their ways, and the kids are the ones suffering. I'm speaking at a town meeting in front of 1000 people and I need to get renovations approved and funded. That's something no school committee chair has managed to do in five decades. What do I say to these people?

- Artie

 Add attachment

Cancel

Save



# SPEAK HUMAN

- Be Clear**
- Be Brief**
- Be Influential**
- Use Magic Words**
- Tell Stories**
- Ask Questions**

# SPEAK HUMAN

- Be Clear**
- Be Brief**
- Be Influential**
- Use Magic Words**
- Tell Stories**
- Ask Questions**



- Presence**
- Vulnerability**
- Enthusiasm**
- Authenticity**
- Gratitude**
- Willingness**
- Openness**

BE A HUMAN

**B***I*U

A ▾

T1 ▾



Dear Tim,

I'm the chair of the school committee and of the 37 surrounding towns and cities, 36 of them have completed major school renovations in the last few years. All except us. My town has not approved school building renovations in over 50 years. **They're stubborn, set in their ways,** and the kids are the ones suffering. I'm speaking at a town meeting in front of 1000 people and I need to get renovations approved and funded. That's something no school committee chair has managed to do in five decades. What do I say to these people?

- Artie

Add attachment

Cancel

Save

**B***I*U

A ▾

T1 ▾



Dear Tim,

I'm the chair of the school committee and of the 37 surrounding towns and cities, 36 of them have completed major school renovations in the last few years. All except us. My town has not approved school building renovations in over 50 years. They're stubborn, set in their ways, and the kids are the ones suffering. I'm speaking at a town meeting in front of 1000 people and I need to get renovations approved and funded. That's something no school committee chair has managed to do in five decades. What do I say to **these people**?

- Artie

Add attachment

Cancel

Save

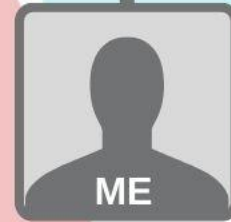






# SPEAK HUMAN

- Be Clear**
- Be Brief**
- Be Influential**
- Use Magic Words**
- Tell Stories**
- Ask Questions**



- Presence**
- Vulnerability**
- Enthusiasm**
- Authenticity**
- Gratitude**
- Willingness**
- Openness**

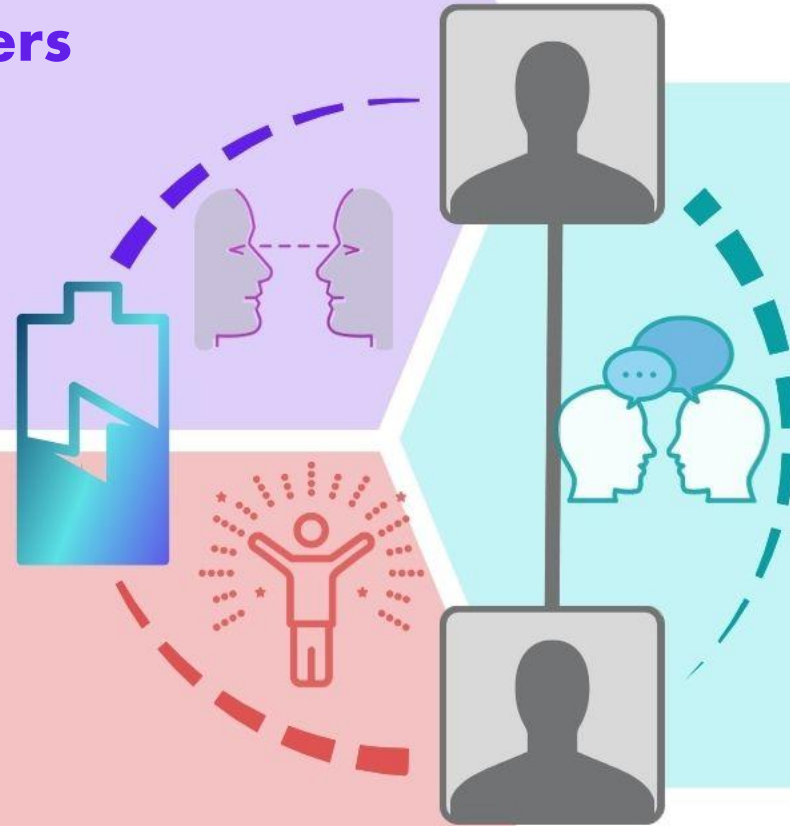
BE A HUMAN

# SEE A HUMAN

**Perspective-Seek**  
**Listen to Understand**  
**Expect the Best in Others**  
**Curiosity**  
**Patience**  
**Empathy**  
**Respect**

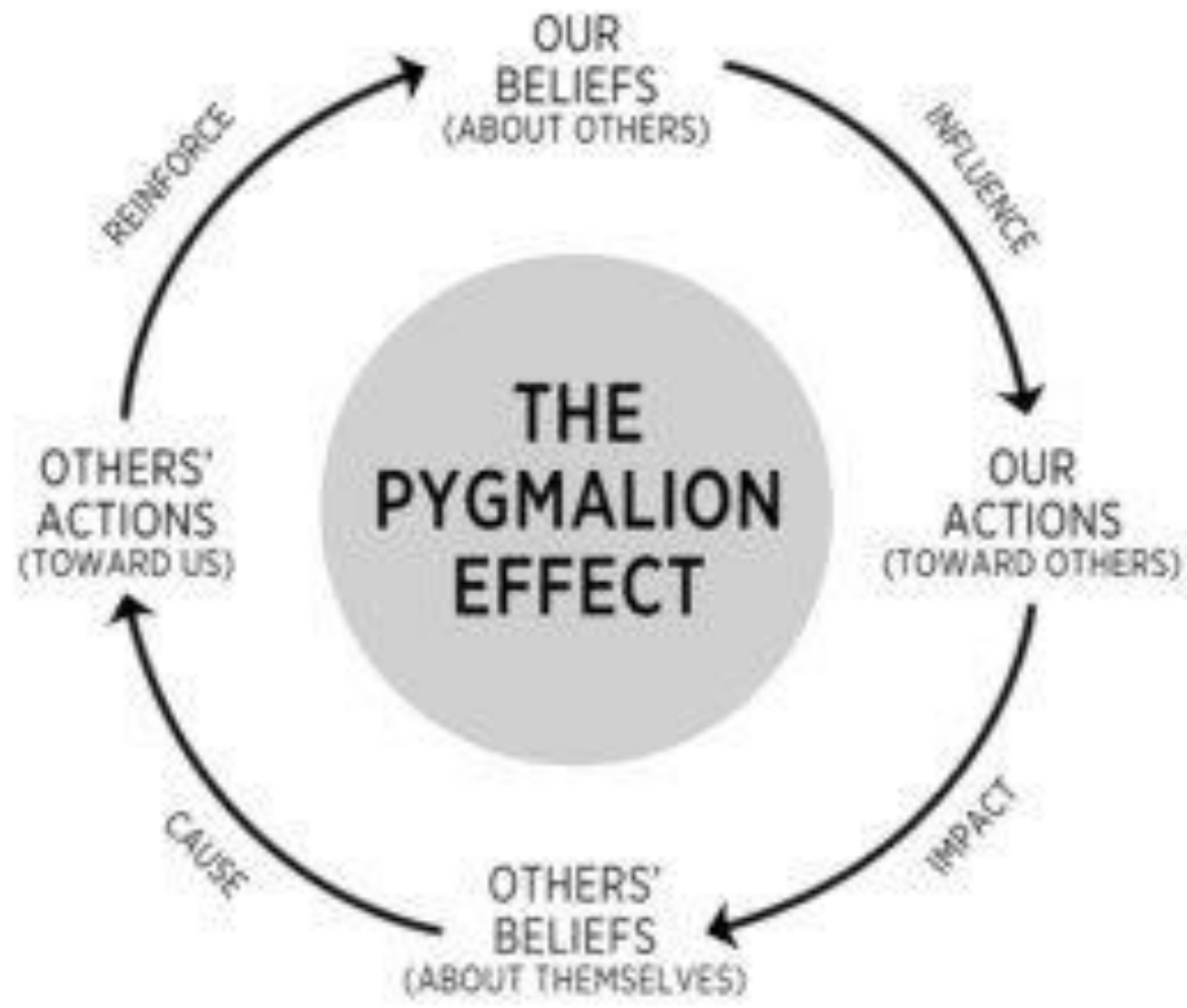
**Presence**  
**Vulnerability**  
**Enthusiasm**  
**Authenticity**  
**Gratitude**  
**Willingness**  
**Openness**

# BE A HUMAN



# SPEAK HUMAN

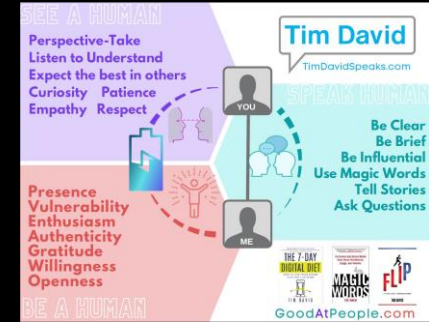
**Be Clear**  
**Be Brief**  
**Be Influential**  
**Use Magic Words**  
**Tell Stories**  
**Ask Questions**







# Give feedback to Tim (and get the infographic)

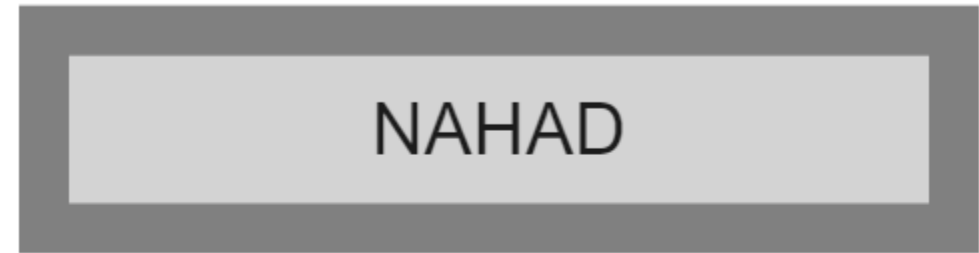


1. Scan this QR code



or go to [talk.ac/timdavid](https://talk.ac/timdavid)

2. Enter this code on the  
screen



# Human Connection

