

HIGHLIGHTS OF PRESCRIBING INFORMATION

These highlights do not include all the information needed to use ZEPZELCA safely and effectively. See full prescribing information for ZEPZELCA.

ZEPZELCA® (lurbinectedin) for injection, for intravenous use
Initial U.S. Approval: 2020

RECENT MAJOR CHANGES

Indications of Usage, Extensive-Stage Small Cell Lung Cancer (1.1)	10/2025
Dosage and Administration, Recommended Dosage (2.1)	10/2025
Dosage and Administration, Dosage Modifications for Use with Strong and Moderate CYP3A Inhibitors (2.3)	04/2025
Dosage and Administration, Dosage Modifications for Patients with Severe and Moderate Hepatic Impairment (2.4)	04/2025
Dosage and Administration, Premedication (2.5)	10/2025
Warnings and Precautions (5)	10/2025

INDICATIONS AND USAGE

ZEPZELCA is an alkylating drug indicated:

- in combination with atezolizumab or atezolizumab and hyaluronidase-tqjs, for the maintenance treatment of adult patients with extensive-stage small cell lung cancer whose disease has not progressed after first-line induction therapy with atezolizumab or atezolizumab and hyaluronidase-tqjs, carboplatin and etoposide. (1.1)
- For the treatment of adult patients with metastatic small cell lung cancer (SCLC) with disease progression on or after platinum-based chemotherapy. (1.2)
This indication is approved under accelerated approval based on overall response rate and duration of response. Continued approval for this indication may be contingent upon verification and description of clinical benefit in a confirmatory trial(s). (1.2)

DOSAGE AND ADMINISTRATION

- Recommended Dosage:** 3.2 mg/m² administered intravenously every 21 days until disease progression or unacceptable toxicity.
- Administration via a central venous line is recommended to reduce the risk of extravasation that can cause tissue necrosis requiring debridement (5.3)
- Administer ZEPZELCA as an intravenous infusion over 60 minutes.
- To reduce the risk of nausea, administer corticosteroids and serotonin agonists prior to Cycle 1 and consider use for subsequent cycles. (2.5)
- To reduce the risk of febrile neutropenia during treatment with ZEPZELCA in combination with atezolizumab or atezolizumab and hyaluronidase-tqjs, administer granulocyte colony-stimulating factor (G-CSF) [Refer to Prescribing Information].
- Moderate Hepatic Impairment:** Recommended dosage is 1.6 mg/m² administered intravenously every 21 days until disease progression or unacceptable toxicity. (2.4, 8.6)
- Severe Hepatic Impairment:** Avoid use of ZEPZELCA. If use cannot be avoided, the recommended dosage is 1.6 mg/m² administered intravenously every 21 days until disease progression or unacceptable toxicity. (2.4, 8.6)

DOSAGE FORMS AND STRENGTHS

For injection: 4 mg lyophilized powder in a single-dose vial. (3)

CONTRAINDICATIONS

None. (4)

WARNINGS AND PRECAUTIONS

- Myelosuppression:** Monitor blood counts prior to each administration. Initiate treatment with ZEPZELCA only if baseline neutrophil count is $\geq 1,500$ cells/mm³ and platelet count is $\geq 100,000$ /mm³. For neutrophil count less than 500 cells/mm³ or any value less than lower limit of normal, administer G-CSF. Withhold, reduce the dose, or permanently discontinue ZEPZELCA based on severity. (5.1)
- Hepatotoxicity:** Monitor liver function tests prior to initiating ZEPZELCA, periodically during treatment and as clinically indicated. Withhold, reduce the dose, or permanently discontinue ZEPZELCA based on severity. (5.2)
- Extravasation Resulting in Tissue Necrosis:** Consider use of a central venous catheter to reduce the risk of extravasation. Monitor patients for signs and symptoms of extravasation during the ZEPZELCA infusion. If extravasation occurs, immediately discontinue the infusion, remove the infusion catheter, and monitor for signs and symptoms of tissue necrosis. (5.3)
- Rhabdomyolysis:** Monitor creatine phosphokinase (CPK) prior to initiating ZEPZELCA and periodically during treatment as clinically indicated. Withhold, reduce the dose, or permanently discontinue ZEPZELCA based on severity. (5.4)
- Embryo-Fetal Toxicity:** Can cause fetal harm. Advise females and males of reproductive potential of the potential risk to a fetus and to use an effective method of contraception. (5.5)

ADVERSE REACTIONS

The most common adverse reactions for ZEPZELCA as a single agent, including laboratory abnormalities, ($\geq 20\%$) are leukopenia, lymphopenia, fatigue, anemia, neutropenia, increased creatinine, increased alanine aminotransferase, increased glucose, thrombocytopenia, nausea, decreased appetite, musculoskeletal pain, decreased albumin, constipation, dyspnea, decreased sodium, increased aspartate aminotransferase, vomiting, cough, decreased magnesium and diarrhea. (6.1)

The most common adverse reactions, for ZEPZELCA in combination with atezolizumab including laboratory abnormalities, ($\geq 30\%$) are: decreased lymphocytes, decreased platelets, decreased hemoglobin, decreased neutrophils, nausea, and fatigue/asthenia. (6.1)

To report SUSPECTED ADVERSE REACTIONS, contact Jazz Pharmaceuticals, Inc. at 1-800-520-5568 or FDA at 1-800-FDA-1088 or www.fda.gov/medwatch.

DRUG INTERACTIONS

Effect of Other Drugs on ZEPZELCA: Avoid coadministration with strong or a moderate CYP3A inhibitors and strong CYP3A inducers. (7.1)

USE IN SPECIFIC POPULATIONS

- Lactation:** Advise not to breastfeed. (8.2)
- Hepatic Impairment:** Avoid use of ZEPZELCA in patients with severe hepatic impairment. In patients with moderate hepatic impairment, reduce the dose of ZEPZELCA. (8.6)

See 17 for PATIENT COUNSELING INFORMATION and FDA approved patient labeling.

Revised: 10/2025

FULL PRESCRIBING INFORMATION: CONTENTS*

1 INDICATIONS AND USAGE

- 1.1 Extensive-Stage Small Cell Lung Cancer
- 1.2 Metastatic Small Cell Lung Cancer

2 DOSAGE AND ADMINISTRATION

- 2.1 Recommended Dosage
- 2.2 Dosage Modifications for Adverse Reactions
- 2.3 Dosage Modifications for Use with Strong and Moderate CYP3A Inhibitors
- 2.4 Dosage Modifications for Patients with Severe and Moderate Hepatic Impairment
- 2.5 Recommended Prophylactic Medications
- 2.6 Preparation, Administration and Storage

3 DOSAGE FORMS AND STRENGTHS

4 CONTRAINDICATIONS

5 WARNINGS AND PRECAUTIONS

- 5.1 Myelosuppression
- 5.2 Hepatotoxicity
- 5.3 Extravasation Resulting in Tissue Necrosis
- 5.4 Rhabdomyolysis
- 5.5 Embryo-Fetal Toxicity

6 ADVERSE REACTIONS

- 6.1 Clinical Trials Experience
- 6.2 Postmarketing Experience

7 DRUG INTERACTIONS

- 7.1 Effect of Other Drugs on ZEPZELCA

8 USE IN SPECIFIC POPULATIONS

- 8.1 Pregnancy
- 8.2 Lactation
- 8.3 Females and Males of Reproductive Potential
- 8.4 Pediatric Use
- 8.5 Geriatric Use
- 8.6 Hepatic Impairment

11 DESCRIPTION

12 CLINICAL PHARMACOLOGY

- 12.1 Mechanism of Action
- 12.2 Pharmacodynamics
- 12.3 Pharmacokinetics

13 NONCLINICAL TOXICOLOGY

- 13.1 Carcinogenesis, Mutagenesis, Impairment of Fertility

14 CLINICAL STUDIES

- 14.1 Extensive-Stage Small Cell Lung Cancer
- 14.2 Metastatic Small Cell Lung Cancer

15 REFERENCES

16 HOW SUPPLIED/STORAGE AND HANDLING

17 PATIENT COUNSELING INFORMATION

***Sections or subsections omitted from the full prescribing information are not listed.**

FULL PRESCRIBING INFORMATION

1 INDICATIONS AND USAGE

1.1 Extensive-Stage Small Cell Lung Cancer

ZEPZELCA, in combination with atezolizumab or atezolizumab and hyaluronidase-tqjs, is indicated for the maintenance treatment of adult patients with extensive-stage small cell lung cancer (ES-SCLC) whose disease has not progressed after first-line induction therapy with atezolizumab or atezolizumab and hyaluronidase-tqjs, carboplatin and etoposide.

1.2 Metastatic Small Cell Lung Cancer

ZEPZELCA is indicated for the treatment of adult patients with metastatic small cell lung cancer (SCLC) with disease progression on or after platinum-based chemotherapy.

This indication is approved under accelerated approval based on overall response rate and duration of response [*see Clinical Studies (14)*]. Continued approval for this indication may be contingent upon verification and description of clinical benefit in a confirmatory trial(s).

2 DOSAGE AND ADMINISTRATION

2.1 Recommended Dosage

The recommended dosage of ZEPZELCA as a single-agent and as a combination with atezolizumab or atezolizumab and hyaluronidase-tqjs is 3.2 mg/m² by intravenous infusion over 60 minutes every 21 days until disease progression or unacceptable toxicity [*see Dosage and Administration (2.4)*].

Initiate treatment with ZEPZELCA only if absolute neutrophil count (ANC) is at least 1,500 cells/mm³ and platelet count is at least 100,000/mm³.

ZEPZELCA with Intravenous Atezolizumab or atezolizumab and hyaluronidase-tqjs

When administering ZEPZELCA on the same day as atezolizumab or atezolizumab and hyaluronidase-tqjs, administer the chosen atezolizumab drug first. For the recommended dosage of atezolizumab or atezolizumab and hyaluronidase-tqjs refer to the respective Prescribing Information.

If discontinuation of atezolizumab or atezolizumab and hyaluronidase-tqjs is required due to an immune-related severe adverse event, treatment with ZEPZELCA may be continued at the same dose as a single agent. If immune toxicity does not resolve or recurs despite discontinuation of atezolizumab, permanently discontinue ZEPZELCA.

2.2 Dosage Modifications for Adverse Reactions

The recommended dose reductions for adverse reactions are listed in Table 1.

Permanently discontinue ZEPZELCA in patients who require a dose interruption of greater than two weeks and in patients who are unable to tolerate 2 mg/m² every 21 days.

Table 1: Dose Reduction for ZEPZELCA for Adverse Reactions

Dose Reduction	Total Dose
First	2.6 mg/m ² every 21 days
Second	2 mg/m ² every 21 days

Dosage modifications for ZEPZELCA for adverse reactions are presented in Table 2.

Table 2: Dosage Modifications for ZEPZELCA for Adverse Reactions

Adverse Reaction	Severity^a	Dosage Modification
Neutropenia ^b <i>[see Warnings and Precautions (5.1)]</i>	Grade 4 or Any grade febrile neutropenia	<ul style="list-style-type: none"> • Withhold ZEPZELCA until absolute neutrophil count (ANC) is $\geq 1500/\text{mm}^3$ • Resume ZEPZELCA at a reduced dose
Thrombocytopenia <i>[see Warnings and Precautions (5.1)]</i>	Grade 3 with bleeding or Grade 4	<ul style="list-style-type: none"> • Withhold ZEPZELCA until platelet $\geq 100,000/\text{mm}^3$ • Resume ZEPZELCA at reduced dose
Hepatotoxicity <i>[see Warnings and Precautions (5.2)]</i>	Grade 2	<ul style="list-style-type: none"> • Withhold ZEPZELCA until Grade ≤ 1 • Resume ZEPZELCA at same dose
	Grade ≥ 3	<ul style="list-style-type: none"> • Withhold ZEPZELCA until Grade ≤ 1 • Resume ZEPZELCA at reduced dose or permanently discontinue
Rhabdomyolysis <i>[see Warnings and Precautions (5.4)]</i>	Grade 2	<ul style="list-style-type: none"> • Withhold ZEPZELCA until Grade ≤ 1 • Resume ZEPZELCA at same dose
	Grade ≥ 3	<ul style="list-style-type: none"> • Permanently discontinue ZEPZELCA.
Other Adverse Reactions <i>[see Adverse Reactions (6.1), Postmarketing (6.2)]</i>	Grade 2	<ul style="list-style-type: none"> • Withhold ZEPZELCA until Grade ≤ 1 • Resume ZEPZELCA at same dose
	Grade ≥ 3	<ul style="list-style-type: none"> • Withhold ZEPZELCA until Grade ≤ 1 • Resume ZEPZELCA at reduced dose or permanently discontinue

^a National Cancer Institute Common Terminology Criteria for Adverse Events (NCI CTCAE) version 4.0.

^b Patients who have not received primary prophylaxis of G-CSF with isolated Grade 4 neutropenia (neutrophil count less than $500/\text{mm}^3$) may receive G-CSF prophylaxis rather than undergo lurbinedectin dose reduction.

2.3 Dosage Modifications for Use with Strong and Moderate CYP3A Inhibitors

Avoid coadministration of ZEPZELCA with strong or moderate CYP3A inhibitors. If coadministration of ZEPZELCA with a strong or moderate CYP3A inhibitor cannot be avoided,

reduce the dose of ZEPZELCA by 50% [see *Drug Interactions (7.1) and Clinical Pharmacology (12.3)*]. After discontinuation of a strong or moderate CYP3A inhibitor for 5 half-lives of the inhibitor, increase the ZEPZELCA dose to the dose used before starting the inhibitor.

2.4 Dosage Modifications for Patients with Severe and Moderate Hepatic Impairment

Avoid administration of ZEPZELCA in patients with severe hepatic impairment (total bilirubin $> 3 \times$ Upper Limit of Normal (ULN)). If administration of ZEPZELCA cannot be avoided, the recommended dosage is 1.6 mg/m² by intravenous infusion over 60 minutes every 21 days until disease progression or unacceptable toxicity [see *Use In Specific Populations (8.6) and Clinical Pharmacology (12.3)*].

In patients with moderate hepatic impairment (total bilirubin > 1.5 to $\leq 3 \times$ ULN and any AST), the recommended dosage of ZEPZELCA is 1.6 mg/m² by intravenous infusion over 60 minutes every 21 days until disease progression or unacceptable toxicity.

2.5 Recommended Prophylactic Medications

ZEPZELCA as a Single-Agent

Consider administering the following pre-infusion medications for antiemetic prophylaxis [see *Adverse Reactions (6.1)*]:

- Corticosteroids (dexamethasone 8 mg intravenously or equivalent)
- Serotonin antagonists (ondansetron 8 mg intravenously or equivalent)

ZEPZELCA with Intravenous Atezolizumab or atezolizumab and hyaluronidase-tqjs

- To reduce the risk of febrile neutropenia during treatment with ZEPZELCA in combination with atezolizumab or atezolizumab and hyaluronidase-tqjs, administer granulocyte colony-stimulating factor (G-CSF) [Refer to Prescribing Information].
- To reduce the risk of nausea, administer the following pre-infusion medications for antiemetic prophylaxis prior to Cycle 1 and consider administering for subsequent cycles [see *Adverse Reactions (6.1)*]:
 - Corticosteroids (dexamethasone 8 mg or equivalent intravenously)
 - Serotonin antagonists (ondansetron 8 mg or equivalent intravenously)

2.6 Preparation, Administration and Storage

ZEPZELCA is a hazardous drug. Follow applicable special handling and disposal procedures¹.

Preparation

- Inject 8 mL of Sterile Water for Injection USP into the vial, yielding a solution containing 0.5 mg/mL lurbinectedin. Shake the vial until complete dissolution.
- Visually inspect the solution for particulate matter and discoloration. The reconstituted solution is a clear, colorless or slightly yellowish solution, free of visible particles.
- Calculate the required volume of reconstituted solution as follows:

$$\text{Volume (mL)} = \frac{\text{Body Surface Area (m}^2\text{)} \times \text{Individual Dose (mg/m}^2\text{)}}{0.5 \text{ mg/mL}}$$

- For administration through a central venous line, withdraw the appropriate amount of reconstituted solution from the vial and add to an infusion container containing at least 100 mL of diluent (0.9% Sodium Chloride Injection USP or 5% Dextrose Injection USP).
- For administration through a peripheral venous line, withdraw the appropriate amount of reconstituted solution from the vial and add to an infusion container containing at least 250 mL of diluent (0.9% Sodium Chloride Injection USP or 5% Dextrose Injection USP).

Administration

- Administration via a central venous line is recommended to reduce the risk of extravasation that can cause tissue necrosis requiring debridement [*see Warnings and Precautions (5.3)*].
- Parenteral drug products should be inspected visually for particulate matter and discoloration prior to administration, whenever solution and container permit. If particulate matter is observed, do not administer.
- ZEPZELCA can be administered with or without an in-line filter. If infusion lines containing in-line filters are utilized for administration of ZEPZELCA, polyethersulfone (PES) in-line filters with pore sizes of 0.22 micron are recommended.
 - Do not use in-line nylon membrane filters when the reconstituted ZEPZELCA solution is diluted using 0.9% Sodium Chloride Injection, USP. Adsorption of ZEPZELCA to the Nylon membrane filters has been observed when 0.9% Sodium Chloride Injection, USP is used as the diluent.
- Compatibility with other intravenous administration materials and the diluted ZEPZELCA solution has been demonstrated in the following materials:
 - Containers: Polyolefin containers (polyethylene, polypropylene and mixtures).
 - Infusion sets: Polyvinyl Chloride (PVC) (non-DEHP-containing), polyurethane and polyolefin infusion sets (polyethylene, polypropylene and polybutadiene).
 - Implantable venous access systems: Implantable venous access systems with titanium and plastic resin ports and with polyurethane or silicone intravenous catheters.
- Do not co-administer ZEPZELCA and other intravenous drugs concurrently within the same intravenous line.

ZEPZELCA with Intravenous Atezolizumab or atezolizumab and hyaluronidase-tqjs

- Administer either atezolizumab or atezolizumab and hyaluronidase-tqjs first, then administer ZEPZELCA. For the recommended dosage of atezolizumab or atezolizumab and hyaluronidase-tqjs refer to the respective Prescribing Information.

Storage of Infusion Solution

- If not used immediately after reconstitution or dilution, the ZEPZELCA solution can be stored prior to administration for up to 24 hours following reconstitution, including

infusion time, at either room temperature/ ambient light or under refrigeration at 2°C to 8°C (36°F to 46°F) conditions.

3 DOSAGE FORMS AND STRENGTHS

For injection: 4 mg of lurbinectedin as a sterile, preservative-free, white to off-white lyophilized powder in a single-dose vial for reconstitution prior to intravenous infusion.

4 CONTRAINDICATIONS

None.

5 WARNINGS AND PRECAUTIONS

5.1 Myelosuppression

ZEPZELCA can cause severe and fatal myelosuppression including febrile neutropenia and sepsis, thrombocytopenia and anemia.

Administer ZEPZELCA only to patients with baseline neutrophil count of at least 1,500 cells/mm³ and platelet count of at least 100,000/mm³. To reduce the risk of febrile neutropenia during treatment with ZEPZELCA in combination with atezolizumab or atezolizumab and hyaluronidase-tqjs, administer granulocyte colony-stimulating factor (G-CSF) [*refer to Prescribing Information*].

Monitor blood counts including neutrophils, red blood cells and platelets prior to each ZEPZELCA administration. For neutrophil count less than 500 cells/mm³ or any value less than lower limit of normal, administer G-CSF. Withhold, reduce the dose, or permanently discontinue ZEPZELCA based on severity [*see Dosage and Administration (2.2)*].

ZEPZELCA with Intravenous Atezolizumab

In the IMforte study [*see Adverse Reactions (6.1)*], primary prophylaxis of G-CSF was administered to 84% of patients. Based on laboratory values, decreased neutrophils occurred in 36%, including 18% Grade 3 or Grade 4 in patients who received ZEPZELCA in combination with atezolizumab. The median time to onset of Grade 3 and 4 decreased neutrophil cells was 31 days and a median duration of 10 days. Febrile neutropenia occurred in 1.7%. Sepsis occurred in 1%. There were 7 fatal infections: pneumonia (n=3), sepsis (n=3), and febrile neutropenia (n=1).

Based on laboratory values, decreased platelets occurred in 54%, including 15% Grade 3 or Grade 4 in patients who received ZEPZELCA in combination with atezolizumab. The median time to onset of Grade 3 and 4 decreased platelet cells was 31 days and a median duration of 12 days.

Based on laboratory values, decreased hemoglobin occurred in 51%, including 13% Grade 3 or Grade 4 in patients who received ZEPZELCA in combination with atezolizumab. The median time to onset of Grade 3 and 4 decreased hemoglobin was 64 days and a median duration of 8 days.

ZEPZELCA as a Single-Agent

In clinical studies of 554 patients with advanced solid tumors receiving ZEPZELCA as a single agent [see *Adverse Reactions (6.1)*], Grade 3 or 4 neutropenia occurred in 41% of patients, with a median time to onset of 15 days and a median duration of 7 days. Febrile neutropenia occurred in 7% of patients. Sepsis occurred in 2% of patients and was fatal in 1% (all cases occurred in patients with solid tumors other than SCLC). Grade 3 or 4 thrombocytopenia occurred in 10%, with a median time to onset of 10 days and a median duration of 7 days. Grade 3 or 4 anemia occurred in 17% of patients.

5.2 Hepatotoxicity

ZEPZELCA can cause hepatotoxicity which may be severe.

Monitor liver function tests prior to initiating ZEPZELCA and periodically during treatment as clinically indicated. Withhold, reduce the dose, or permanently discontinue ZEPZELCA based on severity [see *Dosage and Administration (2.2)*].

ZEPZELCA with Intravenous Atezolizumab

In the IMforte study [see *Adverse Reactions (6.1)*], based on laboratory values, increased alanine aminotransferase (ALT) occurred in 25%, including 3% Grade 3 or Grade 4 in patients who received ZEPZELCA in combination with atezolizumab. Increased aspartate aminotransferase (AST) occurred in 24% including 3% Grade 3 or Grade 4. The median time to onset of Grade ≥ 3 elevation in transaminases was 52 days (range: 6 to 337).

ZEPZELCA as a Single-Agent

In clinical studies of 554 patients with advanced solid tumors receiving ZEPZELCA as a single agent [see *Adverse Reactions (6.1)*], Grade 3 elevations of ALT and AST were observed in 6% and 3% of patients, respectively, and Grade 4 elevations of ALT and AST were observed in 0.4% and 0.5% of patients, respectively. The median time to onset of Grade ≥ 3 elevation in transaminases was 8 days (range: 3 to 49), with a median duration of 7 days.

5.3 Extravasation Resulting in Tissue Necrosis

Extravasation of ZEPZELCA can cause skin and soft tissue injury, including necrosis requiring debridement. Consider use of a central venous catheter to reduce the risk of extravasation, particularly in patients with limited venous access. Monitor patients for signs and symptoms of extravasation during the ZEPZELCA infusion. If extravasation occurs, immediately discontinue the infusion, remove the infusion catheter, and monitor for signs and symptoms of tissue necrosis. The time to onset of necrosis after extravasation may vary.

ZEPZELCA with Intravenous Atezolizumab

In the IMforte study [see *Adverse Reactions (6.1)*], extravasation resulting in skin necrosis occurred in one patient who received ZEPZELCA in combination with atezolizumab.

Administer supportive care and consult with an appropriate medical specialist as needed for signs and symptoms of extravasation. Administer subsequent infusions at a site that was not affected by extravasation.

5.4 Rhabdomyolysis

Rhabdomyolysis has been reported in patients treated with ZEPZELCA.

Monitor creatine phosphokinase (CPK) prior to initiating ZEPZELCA and periodically during treatment as clinically indicated. Withhold or reduce the dose based on severity [see *Dosage and Administration* (2.2)].

ZEPZELCA with Intravenous Atezolizumab

In the IMforte study [see *Adverse Reactions* (6.1)], among 235 patients who had a creatine phosphokinase laboratory evaluation, increased creatine phosphokinase occurred in 9% who received ZEPZELCA in combination with atezolizumab.

5.5 Embryo-Fetal Toxicity

Based on animal data and its mechanism of action ZEPZELCA can cause fetal harm when administered to a pregnant woman. Intravenous administration of a single dose of lurbinectedin (approximately 0.2 times the 3.2 mg/m² clinical dose) to pregnant animals during the period of organogenesis caused 100% embryoletality in rats. Advise pregnant women of the potential risk to a fetus. Advise female patients of reproductive potential to use effective contraception during treatment with ZEPZELCA and for 6 months after the last dose. Advise male patients with female partners of reproductive potential to use effective contraception during treatment with ZEPZELCA and for 4 months after the last dose [see *Use in Specific Populations* (8.1, 8.3)].

6 ADVERSE REACTIONS

The following clinically significant adverse reactions are described elsewhere in the labeling:

- Myelosuppression [see *Warnings and Precautions* (5.1)]
- Hepatotoxicity [see *Warnings and Precautions* (5.2)]
- Extravasation Resulting in Tissue Necrosis [see *Warnings and Precautions* (5.3)]
- Rhabdomyolysis [see *Warnings and Precautions* (5.4)]

6.1 Clinical Trials Experience

Because clinical trials are conducted under widely varying conditions, adverse reaction rates observed in the clinical trials of a drug cannot be directly compared to rates in the clinical trials of another drug and may not reflect the rates observed in practice.

The safety population described in the WARNINGS AND PRECAUTIONS reflects exposure to ZEPZELCA in combination with intravenous atezolizumab in the IMforte study [see *Clinical Studies* (14.1)], in 242 patients with extensive stage small cell lung cancer (ES-SCLC) whose disease had not progressed after initial therapy with atezolizumab, carboplatin, and etoposide. Patients received ZEPZELCA 3.2 mg/m² intravenously (IV) in combination with atezolizumab 1200 mg IV every 21 days until disease progression or unacceptable toxicity. Among 242 patients who received ZEPZELCA in combination with intravenous atezolizumab, 34% were exposed for 6 months or longer and 8% were exposed for greater than one year. The most common adverse reactions (≥ 30%), including laboratory abnormalities, in patients who received

ZEPZELCA with atezolizumab were decreased lymphocytes, decreased platelets, decreased hemoglobin, decreased neutrophils, nausea, and fatigue/asthenia.

The pooled safety population described in the WARNINGS AND PRECAUTIONS also reflects exposure to ZEPZELCA as a single agent at a dose of 3.2 mg/m² intravenously every 21 days in 554 patients with advanced solid tumors. Among 554 patients who received ZEPZELCA, including 105 patients with small cell lung cancer (SCLC) in PM1183-B-005-14 (Study B-005), 24% were exposed for 6 months or longer and 5% were exposed for greater than one year. The most common adverse reactions for ZEPZELCA as a single agent, (Study B-005), including laboratory abnormalities, ($\geq 20\%$) are leukopenia, lymphopenia, fatigue, anemia, neutropenia, increased creatinine, increased alanine aminotransferase, increased glucose, thrombocytopenia, nausea, decreased appetite, musculoskeletal pain, decreased albumin, constipation, dyspnea, decreased sodium, increased aspartate aminotransferase, vomiting, cough, decreased magnesium and diarrhea.

Extensive-Stage Small Cell Lung Cancer (IMforte)

The safety of ZEPZELCA in combination with intravenous (IV) atezolizumab was evaluated in IMforte [see *Clinical Studies (14)*]. Patients received intravenous ZEPZELCA 3.2 mg/m² in combination with intravenous atezolizumab 1200 mg on Day 1 of each 21-day cycle until disease progression or unacceptable toxicity. Primary prophylaxis of G-CSF was administered to 84% of patients. Among 242 patients who received ZEPZELCA with atezolizumab, the median duration of exposure to lurbinectedin was 4.1 months, 33% were exposed for 6 months or longer and 8% were exposed for greater than one year.

The median age of patients who received ZEPZELCA in combination with intravenous atezolizumab was 66 years (range: 35 to 85); 62% male; 82% White, 13% Asian, and 0.8% Black or African American.

Serious adverse reactions occurred in 31% of patients receiving ZEPZELCA in combination with atezolizumab. Serious adverse reactions occurring in $> 2\%$ were pneumonia (2.5%), respiratory tract infection (2.1%), dyspnea (2.1%), and decreased platelet count (2.1%). Fatal adverse reactions occurred in 5% of patients receiving ZEPZELCA with atezolizumab including pneumonia (3 patients), sepsis (3 patients), cardio-respiratory arrest (2 patients), myocardial infarction (2 patients), and febrile neutropenia (1 patient).

Permanent discontinuation of ZEPZELCA due to an adverse reaction occurred in 5% of patients. The adverse reaction resulting in permanent discontinuation in $\geq 1\%$ of patients who received ZEPZELCA was decreased neutrophil count.

Dosage interruptions of ZEPZELCA due to an adverse reaction occurred in 25%. Adverse reactions which required dosage interruption in $\geq 2\%$ of patients included anemia, fatigue, decreased neutrophil count, and decreased platelet count.

Dose reductions of ZEPZELCA due to an adverse reaction occurred in 15% of patients. Adverse reactions which required dosage reduction in $\geq 2\%$ of patients included decreased platelet count, fatigue, nausea and vomiting.

Tables 3 summarizes the adverse reactions in IMforte.

Table 3: Adverse Reactions (≥ 10%) in Patients with ES-SCLC Who Received ZEPZELCA in Combination with Intravenous Atezolizumab in IMforte

Adverse Reaction	ZEPZELCA with Atezolizumab N = 242		Atezolizumab N = 240	
	All Grades (%)	Grade 3 or 4 (%)	All Grades (%)	Grade 3 or 4 (%)
Gastrointestinal				
Nausea	36	3	4	1
Diarrhea ¹	15	0	8	0
Vomiting	14	1	3	0
Constipation	12	0	6	1
General disorders and administration site conditions				
Fatigue ²	32	5	13	2
Musculoskeletal and connective tissue disorders				
Musculoskeletal Pain ³	19	2	16	1
Metabolism and Nutrition				
Decreased appetite	17	0	7	0
Respiratory, thoracic and mediastinal disorders				
Cough ⁴	12	0	8	0
Dyspnea ⁵	11	2	10	2

Graded per NCI CTCAE v5.0

¹ Includes diarrhea and colitis

² Includes fatigue and asthenia.

³ Includes arthralgia, arthritis, back pain, bone pain, musculoskeletal chest pain, musculoskeletal discomfort, musculoskeletal pain, myalgia, neck pain, non-cardiac chest pain, and pain in extremity.

⁴ Includes cough, productive cough, and upper-airway cough syndrome.

⁵ Includes dyspnea and dyspnea exertional.

Clinically relevant adverse reactions in < 10% of patients who received ZEPZELCA in combination with intravenous atezolizumab included pneumonia, phlebitis, extravasation resulting in skin necrosis, hypersensitivity, and increased creatine phosphokinase.

Table 4 summarizes the laboratory abnormalities in IMforte.

Table 4: Select Laboratory Abnormalities ($\geq 20\%$) That Worsened from Baseline in Patients with ES-SCLC Who Received ZEPZELCA in Combination with Intravenous Atezolizumab in IMforte

Laboratory Abnormality	ZEPZELCA with Atezolizumab N = 242		Atezolizumab N = 240	
	All Grades (%)	Grade 3 or 4 (%)	All Grades (%)	Grade 3 or 4 (%)
Hematology				
Decreased lymphocytes	55	17	31	11
Decreased platelets	54	15	15	3
Decreased hemoglobin	51	13	12	3
Decreased neutrophils	36	18	7	4
Chemistry				
Increased alkaline phosphatase	29	1	14	0
Decreased sodium	27	4	30	5
Increased ALT	25	3	18	2
Increased AST	24	3	22	1
Decreased calcium	24	3	8	1
Increased creatinine	21	3	14	0

Graded per NCI CTCAE v5.0

Metastatic Small Cell Lung Cancer (SCLC) (Study B-005)

The safety of ZEPZELCA was evaluated in a cohort of 105 patients with previously treated SCLC in Study B-005 [see *Clinical Studies (14)*]. Patients received ZEPZELCA 3.2 mg/m² intravenously every 21 days. All patients in this study received a pre-specified anti-emetic regimen consisting of a corticosteroid and serotonin antagonist. Patients could receive G-CSF for secondary prophylaxis (i.e., after patients had an initial decrease in WBC), but not primary prophylaxis. Among patients who received ZEPZELCA, 29% were exposed for 6 months or longer and 6% were exposed for greater than one year.

Serious adverse reactions occurred in 34% of patients who received ZEPZELCA. Serious adverse reactions in $\geq 3\%$ of patients included pneumonia, febrile neutropenia, neutropenia, respiratory tract infection, anemia, dyspnea, and thrombocytopenia.

Permanent discontinuation due to an adverse reaction occurred in two patients (1.9%) who received ZEPZELCA. Adverse reactions resulting in permanent discontinuation in $\geq 1\%$ of patients who received ZEPZELCA, which included peripheral neuropathy and myelosuppression.

Dosage interruptions due to an adverse reaction occurred in 30.5% of patients who received ZEPZELCA. Adverse reactions requiring dosage interruption in $\geq 3\%$ of patients who received ZEPZELCA included neutropenia, and hypoalbuminemia.

Dose reductions due to an adverse reaction occurred in 25% of patients who received ZEPZELCA. Adverse reactions requiring dosage reductions in $\geq 3\%$ of patients who received ZEPZELCA included neutropenia, febrile neutropenia and fatigue.

The most common adverse reactions, including laboratory abnormalities, ($\geq 20\%$) were leukopenia, lymphopenia, fatigue, anemia, neutropenia, increased creatinine, increased alanine aminotransferase, increased glucose, thrombocytopenia, nausea, decreased appetite, musculoskeletal pain, decreased albumin, constipation, dyspnea, decreased sodium, increased aspartate aminotransferase, vomiting, cough, decreased magnesium and diarrhea.

Table 5 summarizes the adverse reactions in the SCLC cohort of Study B-005.

Table 5: Adverse Reactions ($\geq 10\%$) in Patients with SCLC Who Received ZEPZELCA in Study B-005

Adverse Reaction	ZEPZELCA (n=105)	
	All Grades ^{a,b} (%)	Grades 3-4 (%)
General disorders		
Fatigue	77	12
Pyrexia	13	0
Chest pain	10	0
Gastrointestinal disorders		
Nausea	37	0
Constipation	31	0
Vomiting	22	0
Diarrhea	20	4
Abdominal pain ^c	11	1
Musculoskeletal and connective tissue disorders		
Musculoskeletal pain ^d	33	4
Metabolism and nutrition disorders		
Decreased appetite	33	1
Respiratory, thoracic and mediastinal disorders		
Dyspnea	31	6
Cough ^e	20	0

Infections and infestations		
Respiratory tract infection ^f	18	5
Pneumonia ^g	10	7
Nervous system disorders		
Peripheral neuropathy ^h	11	1
Headache	10	1

^a Graded per NCI CTCAE 4.0.

^b No grade 5 adverse reactions were reported.

^c Includes abdominal pain, abdominal pain upper and abdominal discomfort.

^d Includes musculoskeletal pain, back pain, arthralgia, pain in extremity, musculoskeletal chest pain, neck pain, bone pain and myalgia.

^e Includes cough and productive cough.

^f Includes upper respiratory tract infection, viral upper respiratory tract infection, respiratory tract infection and bronchitis.

^g Includes pneumonia and lung infection.

^h Includes neuropathy peripheral, neuralgia, paresthesia, peripheral sensory neuropathy, hypoesthesia, and hyperesthesia.

Clinically relevant adverse reactions in < 10% of patients who received ZEPZELCA include dysgeusia, febrile neutropenia and pneumonitis.

Table 6 summarizes the laboratory abnormalities in Study B-005.

Table 6: Select Laboratory Abnormalities (≥ 20%) Worsening from Baseline in Patients with SCLC Who Received ZEPZELCA in Study B-005

Laboratory Abnormality	ZEPZELCA ^a (n=105)	
	All Grades ^b (%)	Grades 3-4 (%)
Hematology		
Decreased leukocytes	79	29
Decreased lymphocytes	79	43
Decreased hemoglobin	74	10
Decreased neutrophils	71	46
Decreased platelets	37	7
Chemistry		
Increased creatinine	69	0
Increased alanine aminotransferase	66	4
Increased glucose	52	5
Decreased albumin	32	1
Decreased sodium	31	7

Increased aspartate aminotransferase	26	2
Decreased magnesium	22	0

^a The denominator used to calculate the rate varied from 95 to 105 based on the number of patients with a baseline value and at least one post-treatment value.

^b Graded per NCI CTCAE 4.0.

6.2 Postmarketing Experience

The following adverse reactions have been identified during post-approval use of ZEPZELCA. Because these reactions are reported voluntarily from a population of uncertain size, it is not always possible to reliably estimate their frequency or establish a causal relationship to drug exposure.

General disorders and administration site conditions: Extravasation including tissue necrosis requiring debridement.

Musculoskeletal and Connective Tissue Disorders: Rhabdomyolysis.

Metabolism and nutrition disorders: Tumor lysis syndrome.

7 DRUG INTERACTIONS

7.1 Effect of Other Drugs on ZEPZELCA

Strong and Moderate CYP3A Inhibitors

Coadministration of ZEPZELCA with a strong or a moderate CYP3A inhibitor increases lurbinedin systemic exposure [*see Clinical Pharmacology (12.3)*], which may increase the incidence and severity of adverse reactions to ZEPZELCA.

Avoid grapefruit and Seville oranges during ZEPZELCA treatment, as these contain strong or moderate inhibitors of CYP3A.

Avoid coadministration of ZEPZELCA with strong or moderate CYP3A inhibitors. If coadministration cannot be avoided, reduce the dose of ZEPZELCA [*see Dosage and Administration (2.3)*].

Strong CYP3A Inducers

Avoid coadministration of ZEPZELCA with strong CYP3A inducers. Coadministration of ZEPZELCA with a strong CYP3A inducer may decrease lurbinedin systemic exposure, which may decrease the efficacy of ZEPZELCA [*see Clinical Pharmacology (12.3)*].

8 USE IN SPECIFIC POPULATIONS

8.1 Pregnancy

Risk Summary

Based on animal data and its mechanism of action [*see Clinical Pharmacology (12.1)*], ZEPZELCA can cause fetal harm when administered to a pregnant woman. There are no available data to inform the risk of ZEPZELCA use in pregnant women. Intravenous

administration of a single lurbinectedin dose (approximately 0.2 times the 3.2 mg/m² clinical dose) to pregnant rats during the period of organogenesis caused embryoletality (*see Data*).

Advise pregnant women of the potential risk to a fetus.

The estimated background risk of major birth defects and miscarriage for the indicated population is unknown. All pregnancies have a background risk of birth defect, loss, or other adverse outcomes. In the U.S. general population, the estimated background risk of major birth defects and miscarriage in clinically recognized pregnancies is 2 to 4% and 15 to 20%, respectively.

Data

Animal Data

In a reproductive toxicity study, administration of a single lurbinectedin dose of 0.6 mg/m² (approximately 0.2 times of the human dose of 3.2 mg/m²) to pregnant rats on Gestation Day 10 resulted in 100% post-implantation loss.

8.2 Lactation

Risk Summary

There are no data on the presence of lurbinectedin in human milk or its effects on the breastfed child or on milk production. Because of the potential for serious adverse reactions from ZEPZELCA in breastfed children, advise women not to breastfeed during treatment with ZEPZELCA and for 2 weeks after the last dose.

8.3 Females and Males of Reproductive Potential

ZEPZELCA can cause embryoletality at doses lower than the human dose of 3.2 mg/m² [*see Use in Specific Populations (8.1)*].

Pregnancy Testing

Verify the pregnancy status of females of reproductive potential prior to initiating ZEPZELCA.

Contraception

Females

Advise female patients of reproductive potential to use effective contraception during treatment with ZEPZELCA and for 6 months after the last dose.

Males

Advise males with a female sexual partner of reproductive potential to use effective contraception during treatment with ZEPZELCA and for 4 months after the last dose.

8.4 Pediatric Use

The safety and effectiveness of ZEPZELCA in pediatric patients have not been established.

8.5 Geriatric Use

ZEPZELCA with Intravenous Atezolizumab

Of the 242 patients with ES-SCLC treated with ZEPZELCA and atezolizumab in IMforte, 124 (51%) patients were 65 years of age and older, while 29 (12%) patients were 75 years of age and older. No overall differences in effectiveness were observed between older and younger patients. There was no overall difference in the incidence of serious adverse reactions in patients ≥ 65 years of age and patients < 65 years of age (33% vs. 29%, respectively). There was a higher incidence of Grade 3 or 4 adverse reactions in patients ≥ 65 years of age compared to younger patients (45% vs. 31%, respectively).

ZEPZELCA as a single agent

Of the 105 patients with SCLC administered ZEPZELCA in clinical studies, 37 (35%) patients were 65 years of age and older, while 9 (9%) patients were 75 years of age and older. No overall difference in effectiveness was observed between patients aged 65 and older and younger patients.

There was a higher incidence of serious adverse reactions in patients ≥ 65 years of age than in patients < 65 years of age (49% vs. 26%, respectively). The serious adverse reactions most frequently reported in patients ≥ 65 years of age were related to myelosuppression and consisted of febrile neutropenia (11%), neutropenia (11%), thrombocytopenia (8%), and anemia (8%) [see *Adverse Reactions (6.1)*]. There was a higher incidence of Grade 3 or 4 adverse reactions in patients ≥ 65 years of age compared to younger patients (76% vs. 50%, respectively).

8.6 Hepatic Impairment

Avoid administration of ZEPZELCA in patients with severe hepatic impairment (total bilirubin $> 3 \times$ ULN). If administration of ZEPZELCA cannot be avoided, reduce the dose [see *Dosage and Administration (2.4)*]. Monitor for increased adverse reactions in patients with severe hepatic impairment.

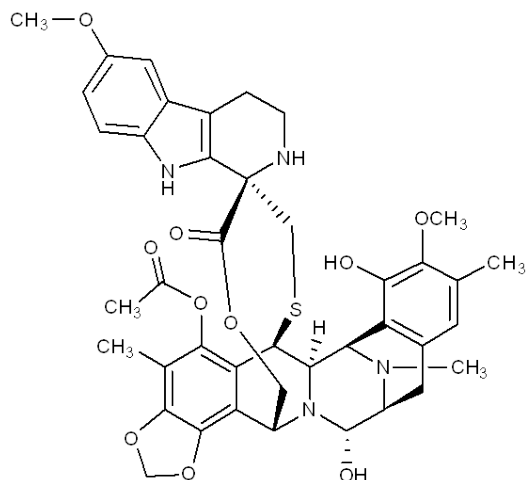
Reduce the dose of ZEPZELCA in patients with moderate hepatic impairment (total bilirubin > 1.5 to $3 \times$ ULN and any AST) [see *Dosage and Administration (2.4)*]. Monitor for increased adverse reactions in patients with moderate hepatic impairment.

No dose adjustment of ZEPZELCA is recommended for patients with mild hepatic impairment (total bilirubin \leq ULN and AST $>$ ULN, or total bilirubin 1 to $\leq 1.5 \times$ ULN and any AST) [see *Clinical Pharmacology (12.3)*].

11 DESCRIPTION

ZEPZELCA is an alkylating drug. The chemical name of ZEPZELCA (lurbinectedin) is (1'R,6R,6aR,7R,13S,14S,16R)-8,14-dihydroxy-6',9-dimethoxy-4,10,23-trimethyl-19-oxo-2',3',4',6,7,9',12,13,14,16-decahydro-6aH-spiro[7,13-azano-6,16-(epithiopropanooxymethano)[1,3]dioxolo[7,8]isoquinolino[3,2-b][3]benzazocine-20,1'-pyrido[3,4-b]indol]-5-yl acetate.

The molecular formula is $C_{41}H_{44}N_4O_{10}S$. The molecular weight is 784.87g/mol, and the chemical structure is:



ZEPZELCA for injection 4 mg is supplied as a lyophilized powder in a single-dose vial for reconstitution for intravenous use. The ZEPZELCA lyophilized formulation is comprised of 4 mg lurbinectedin, sucrose (800 mg), lactic acid (22.1 mg), and sodium hydroxide (5.1 mg). Before use, the lyophilizate is reconstituted by addition of 8 mL Sterile Water for Injection USP, yielding a solution containing 0.5 mg/mL lurbinectedin (the calculated concentration is 0.47 mg/mL based on the final volume of 8.5 mL).

12 CLINICAL PHARMACOLOGY

12.1 Mechanism of Action

Lurbinectedin is an alkylating drug that binds guanine residues in the minor groove of DNA, forming adducts and resulting in a bending of the DNA helix towards the major groove. Adduct formation triggers a cascade of events that can affect the subsequent activity of DNA binding proteins, including some transcription factors, and DNA repair pathways, resulting in perturbation of the cell cycle and eventual cell death.

Lurbinectedin inhibited human monocyte activity in vitro and reduced macrophage infiltration in implanted tumors in mice.

12.2 Pharmacodynamics

Lurbinectedin exposure-response relationships and the pharmacodynamic time-course for efficacy have not been fully characterized.

Increased incidence of Grade 4 neutropenia and Grade ≥ 3 thrombocytopenia were observed with increased lurbinectedin exposure.

Cardiac Electrophysiology

No large mean increase in QTc (i.e., > 20 ms) was detected at the recommended dose of 3.2 mg/m².

12.3 Pharmacokinetics

Following the approved recommended dosage, geometric mean (%CV) of plasma C_{max} and AUC_{0-inf} , were 107 $\mu\text{g/L}$ (79%) and 551 $\mu\text{g}\cdot\text{h/L}$ (94%), respectively. No accumulation of lurbinectedin in plasma is observed upon administrations every 3 weeks.

Distribution

The volume of distribution of lurbinectedin at steady state is 504 L (39%). Plasma protein binding is approximately 99%, to both albumin and α -1-acid glycoprotein.

Elimination

The terminal half-life of lurbinectedin is 51 hours. Total plasma clearance of lurbinectedin is 11 L/h (50%).

Metabolism

Lurbinectedin is metabolized by CYP3A in vitro.

Excretion

After a single dose of radiolabeled lurbinectedin, 89% of the radioactivity was recovered in feces (< 0.2% unchanged) and 6% in urine (1% unchanged).

Specific Populations

No clinically significant differences in the pharmacokinetics of lurbinectedin were identified based on age (18-85 years), sex, body weight (39-154 kg), or mild to moderate renal impairment (CL_{cr} 30 to 89 mL/min). The effects of severe renal impairment (CL_{cr} < 30 mL/min) on the pharmacokinetics of lurbinectedin have not been studied.

Hepatic Impairment

No clinically significant differences in the pharmacokinetics of lurbinectedin were identified for patients with mild hepatic impairment (total bilirubin \leq ULN and AST > ULN or total bilirubin 1 to 1.5 \times ULN and any AST) compared to that of patients with normal hepatic function.

No clinically significant differences in the pharmacokinetics of lurbinectedin were identified for patients with moderate hepatic impairment (total bilirubin > 1.5 to 3 \times ULN and any AST) who received a lurbinectedin dose of 1.6 mg/m^2 compared to that of patients with mild hepatic impairment who received a dose of 3.2 mg/m^2 .

No clinically significant differences in the pharmacokinetics of lurbinectedin were identified for patients with severe hepatic impairment (total bilirubin > 3 \times ULN) who received a lurbinectedin dose of 1.6 mg/m^2 compared to that of patients with mild hepatic impairment who received a dose of 3.2 mg/m^2 .

Drug Interactions Studies

Clinical Studies and Model-Informed Approaches

Effects of CYP3A Inhibitors on Lurbinectedin

Strong CYP3A inhibitors: Coadministration of itraconazole (200 mg once daily) increased the systemic exposure (AUC) of total lurbinectedin by 2.7-fold and unbound lurbinectedin by 2.4-fold.

Moderate CYP3A inhibitors: Coadministration of verapamil (80 mg every 8 hours) and erythromycin (500 mg every 6 hours) is predicted to increase lurbinectedin AUC by 2.3-fold and 2.1-fold, respectively.

Weak CYP3A inhibitors: Coadministration of fluvoxamine (150 mg every 12 hours) is predicted to increase lurbinectedin AUC by 1.3-fold.

Effects of CYP3A Inducers on Lurbinectedin

Coadministration of bosentan (a moderate CYP3A inducer) decreased systemic exposure (AUC) of total lurbinectedin by 20% and unbound lurbinectedin by 19%. These changes are not considered clinically relevant.

In vitro Studies

Cytochrome P450 (CYP) Enzymes: Lurbinectedin is not an inhibitor of CYP1A2, CYP2B6, CYP2C8, CYP2C9, CYP2C19, CYP2D6, CYP2E1, or CYP3A4.

Lurbinectedin is not an inducer of CYP1A2 or CYP3A4.

Transporter Systems: Lurbinectedin is a substrate of MDR1, but is not a substrate of OATB1P1, OATP1B3, OCT1, or MATE1.

Lurbinectedin inhibits MDR1, OATP1B1, OATP1B3, and OCT1 but not BCRP, BSEP, MATE1, OAT1, OAT3, or OCT2.

13 NONCLINICAL TOXICOLOGY

13.1 Carcinogenesis, Mutagenesis, Impairment of Fertility

Carcinogenicity testing of lurbinectedin has not been performed. Lurbinectedin is genotoxic to mammalian cells in the presence and absence of metabolic activation. Lurbinectedin was not mutagenic in vitro in a bacterial reverse mutation (Ames) assay.

Fertility studies with lurbinectedin were not performed. There were no findings in reproductive organs in general toxicology studies in rats, dogs, or monkeys; however, the highest doses and exposures in these studies were all at levels lower than those at the human dose of 3.2 mg/m².

14 CLINICAL STUDIES

14.1 Extensive-Stage Small Cell Lung Cancer

The efficacy of ZEPZELCA in combination with intravenous (IV) atezolizumab was evaluated in IMforte (NCT05091567), a randomized, multicenter, open-label study in patients with first-line extensive-stage small cell lung cancer (ES-SCLC). Patients were eligible if their disease had not progressed after completion of four cycles of atezolizumab, carboplatin and etoposide (induction treatment) and their Eastern Cooperative Oncology Group (ECOG) performance status was 0 or 1. The trial excluded patients with CNS metastases, history of autoimmune disease, or administration of systemic immunosuppressive medications within 1 week prior to enrollment. Unless contraindicated, primary prophylaxis with granulocyte colony-stimulating factor (G-CSF) was mandated for patients assigned to the ZEPZELCA with atezolizumab arm.

The trial randomized 483 patients who had not experienced disease progression following the completion of 4 cycles of intravenous atezolizumab with carboplatin and etoposide 1:1 to one of the following treatment arms:

- ZEPZELCA 3.2 mg/m² IV with atezolizumab 1200 mg IV once every 3 weeks until disease progression or unacceptable toxicity, or
- Atezolizumab 1200 mg IV once every 3 weeks until disease progression or unacceptable toxicity

Randomization was stratified by ECOG performance status prior to randomization (0 vs. 1), lactate dehydrogenase (LDH) (\leq ULN vs. $>$ ULN) prior to randomization, presence of liver metastases prior to initial study enrollment (yes vs. no), and prior receipt of prophylactic cranial irradiation (yes vs. no).

The major efficacy outcome measures were overall survival (OS) and progression-free survival (PFS) by Independent Review Facility (IRF) per RECIST v1.1.

A total of 483 patients were randomized, including 242 to the ZEPZELCA with atezolizumab arm and 241 to the atezolizumab arm. The median age was 66 years (range 35 to 85); 63% male; 82% White, 13% Asian, 0.8% were Black or African American; 7% were of Hispanic or Latino ethnicity; and 98% were current or previous smokers. Baseline ECOG performance status was 0 (43%) or 1 (57%).

Efficacy results are presented in Table 7 and Figures 1 and 2.

Table 7: Efficacy Results from IMforte

	ZEPZELCA with Atezolizumab N=242	Atezolizumab N=241
Overall Survival¹		
Deaths (%)	113 (47%)	136 (56%)
Median, months	13.2	10.6
(95% CI)	(11.9, 16.4)	(9.5, 12.2)
Hazard ratio ² (95% CI)	0.73 (0.57, 0.95)	
p-value ^{3,6}	0.0174	
Progression-Free Survival^{1,4,5}		
Number of events (%)	174 (72%)	202 (84%)
Median, months	5.4	2.1
(95% CI)	(4.2, 5.8)	(1.6, 2.7)
Hazard ratio ² (95% CI)	0.54 (0.43, 0.67)	
p-value ^{3,7}	< 0.0001	
¹ Measured from the time of randomization ² Stratified by ECOG performance status, LDH level, presence of liver metastases and prior receipt of prophylactic cranial irradiation ³ Based on the two-sided stratified log-rank test ⁴ As determined by IRF ⁵ per RECIST v1.1 (Response Evaluation Criteria in Solid Tumors v1.1) ⁶ Compared to the allocated alpha of 0.0313 (two-sided) for this interim OS analysis. ⁷ Compared to the allocated alpha of 0.001 (two- sided) for this final PFS analysis. CI=confidence interval		

Figure 1: Progression Free survival Curve in IMforte

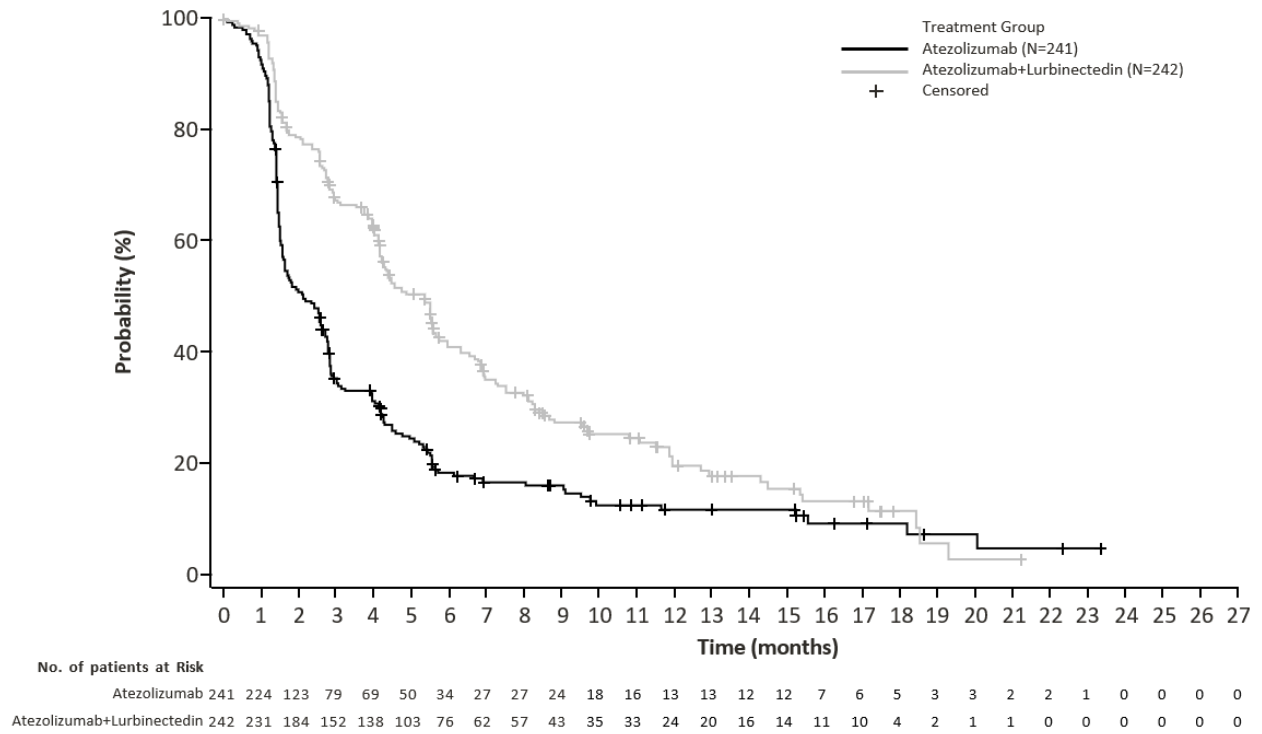
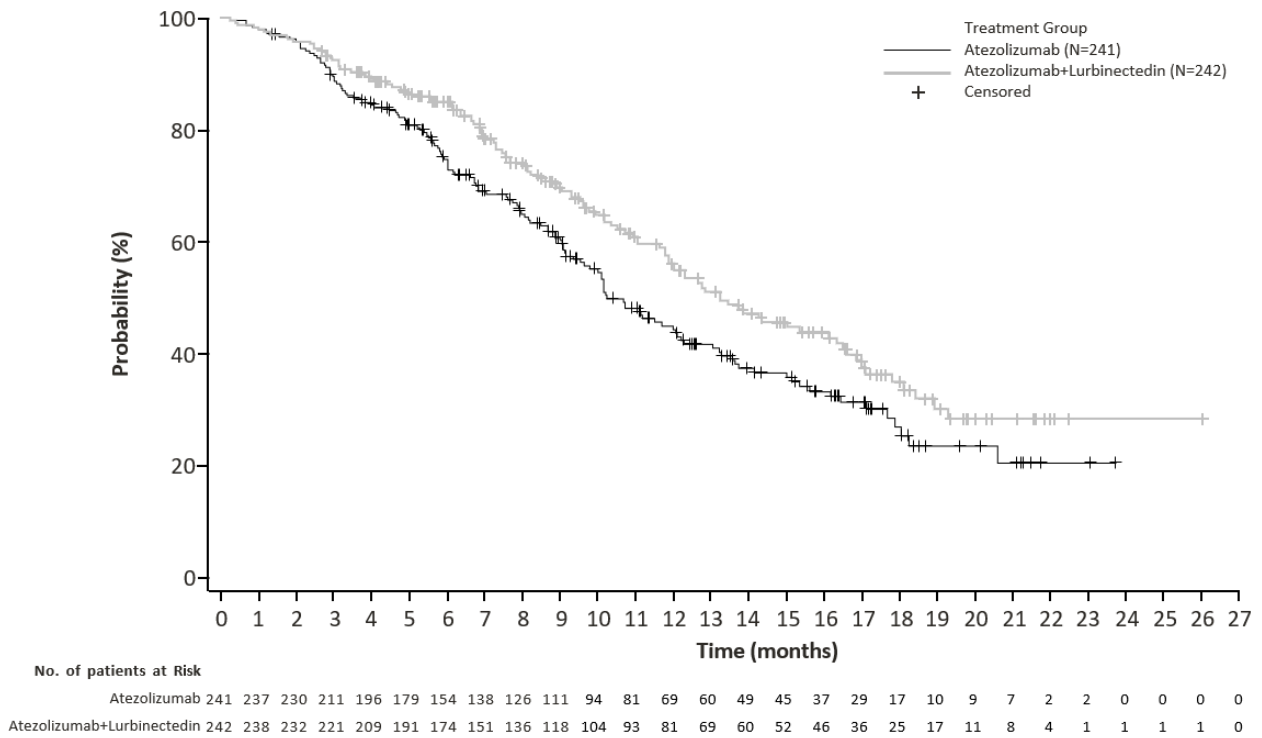


Figure 2: Kaplan-Meier Plot of Overall Survival in IMforte



14.2 Metastatic Small Cell Lung Cancer

PM1183-B-005-14 (Study B-005; NCT02454972) is a multicenter, open-label, multi-cohort trial evaluating ZEPZELCA as a single agent in patients with advanced or metastatic solid tumors. A cohort of patients with small cell lung cancer (SCLC) with disease progression on or after platinum-based chemotherapy received ZEPZELCA 3.2 mg/m² by intravenous infusion every 21 days (one cycle). Patients received a median of 4 cycles of ZEPZELCA (range 1 to 24 cycles). The trial excluded patients with central nervous system (CNS) involvement, grade ≥ 3 dyspnea, daily intermittent oxygen requirement, hepatitis or cirrhosis, and immunocompromised patients. Tumor assessments were conducted every 6 weeks for the first 18 weeks and every 9 weeks thereafter. The major efficacy outcome measure was confirmed investigator-assessed overall response rate (ORR). Additional efficacy outcome measures included duration of response (DoR), and an Independent Review Committee (IRC) assessed ORR using Response Evaluation Criteria in Solid Tumors (RECIST v1.1).

A total of 105 patients with SCLC who progressed on or after platinum-based chemotherapy were enrolled. The median age was 60 years (range: 40 to 83) with 65% of patients < 65 years and 35% of patients ≥ 65 years, and 60% were male. The majority (75%) of the patients were White, 1% were Asian, 1% were Black and 23% were not reported. Baseline ECOG performance status was 0 or 1 in 92% of patients, and 92% were former/current smokers. All patients received at least one line of platinum-based chemotherapy (range 1-2 lines), and prior radiotherapy had been administered to 71% of patients. Eight patients (8%) had prior immunotherapy in addition to platinum-based chemotherapy. Sixty patients (57%) had platinum-sensitive SCLC, defined as recurrence or progression ≥ 90 days after the last dose of platinum-containing therapy (chemotherapy free interval [CTFI] ≥ 90 days). The remaining 45 patients had platinum-resistant SCLC, defined as recurrence or progression < 90 days after the last dose of platinum-containing therapy (CTFI < 90 days).

Table 8 summarizes investigator-assessed and independent review committee assessed key efficacy measures in all patients and in platinum-resistant and platinum-sensitive subgroups.

Table 8: Efficacy Results in SCLC Cohort of Study B-005

Investigator Assessed Response^a	ZEPZELCA All Patients (n=105)	ZEPZELCA CTFI < 90 days (n=45)	ZEPZELCA CTFI ≥ 90 days (n=60)
Overall Response Rate (95% CI)	35% (26%, 45%)	22% (11%, 37%)	45% (32%, 58%)
Complete response	0%	0%	0%
Partial response	35%	22%	45%
Duration of Response			
Median in months (95% CI)	5.3 (4.1, 6.4)	4.7 (2.6, 5.6)	6.2 (3.5, 7.3)
% with ≥ 6 months ^b	35%	10%	44%
Independent Review Committee Assessed Response^a	All Patients (n=105)	CTFI < 90 days (n=45)	CTFI ≥ 90 days (n=60)
Overall Response Rate (95% CI)	30% (22%, 40%)	13% (5%, 27%)	43% (31%, 57%)
Complete response	0%	0%	0%
Partial response	30%	13%	43%
Duration of Response			
Median in months (95% CI)	5.1 (4.9, 6.4)	4.8 (2.4, 5.3)	5.3 (4.9, 7.0)
% with ≥ 6 months ^b	25%	0%	31%

CI: confidence interval, CTFI: chemotherapy free interval.

^a Confirmed overall response rate.

^b Based on observed duration of response.

15 REFERENCES

1. "OSHA Hazardous Drugs." OSHA. <http://www.osha.gov/SLTC/hazardousdrugs/index.html>

16 HOW SUPPLIED/STORAGE AND HANDLING

How Supplied

ZEPZELCA (lurbinectedin) for injection is supplied as a sterile, preservative-free, white to off-white lyophilized powder in a single-dose clear glass vial. Each carton (NDC 68727-712-01) contains 4 mg in one single-dose vial.

Storage and Handling

Store refrigerated at 2°C to 8°C (36°F to 46°F).

ZEPZELCA is a hazardous drug. Follow applicable special handling and disposal procedures¹.

17 PATIENT COUNSELING INFORMATION

Advise the patient to read the FDA-approved patient labeling (Patient Information).

Myelosuppression

Advise patients that ZEPZELCA can cause myelosuppression. Inform patients about the signs and symptoms of myelosuppression and to immediately contact their healthcare provider if signs or symptoms occur [see *Warnings and Precautions (5.1)*].

Hepatotoxicity

Advise patients that ZEPZELCA can cause hepatotoxicity and to contact their healthcare provider immediately if signs or symptoms occur [see *Warnings and Precautions (5.2)*].

Extravasation Resulting in Tissue Necrosis

Advise patients that administration of ZEPZELCA through a central venous catheter is recommended because extravasation of ZEPZELCA can cause skin and soft tissue injury, including necrosis requiring debridement. Advise patients to contact their healthcare provider immediately for signs or symptoms of extravasation. The time to onset of necrosis after extravasation may vary [see *Warnings and Precautions (5.3)*].

Rhabdomyolysis

Advise patients that rhabdomyolysis has been reported with the use of ZEPZELCA and to contact their healthcare provider immediately for signs and symptoms of rhabdomyolysis [see *Warnings and Precautions (5.4)*].

Embryo-Fetal Toxicity

- Advise pregnant women and females of reproductive potential of the potential risk to a fetus. Advise females to inform their healthcare provider of a known or suspected pregnancy [see *Warnings and Precautions (5.5)*, *Use in Specific Populations (8.1)*].
- Advise females of reproductive potential to use effective contraception during treatment with ZEPZELCA and for 6 months after the last dose [see *Use in Specific Populations (8.3)*].
- Advise males with female partners of reproductive potential to use effective contraception during treatment with ZEPZELCA and for 4 months after the last dose [see *Use in Specific Populations (8.3)*].

Lactation

Advise women not to breastfeed during treatment with ZEPZELCA and for at least 2 weeks after the last dose [see *Use in Specific Populations (8.2)*].

Drug Interactions

Advise patients to inform their healthcare providers of all concomitant medications, herbal and dietary supplements. Advise patients to avoid grapefruit products and Seville oranges during treatment with ZEPZELCA [see *Drug Interactions (7.1)*].

Distributed by:
Jazz Pharmaceuticals, Inc.

Palo Alto, CA 94306

Under license from Pharma Mar, S.A.

Protected by U.S. Patent No. 7,763,615

PATIENT INFORMATION
ZEPZELCA® (zep zel' kah)
(lurbinectedin)
for injection

What is ZEPZELCA?

ZEPZELCA may be used to treat adults with a kind of lung cancer called small cell lung cancer (SCLC):

- ZEPZELCA may be used in combination with atezolizumab or atezolizumab and hyaluronidase-tqjs as maintenance treatment when your lung cancer:
 - is a type called “extensive-stage”, which means it has spread or grown, **and**
 - has not progressed after first treatment with atezolizumab or atezolizumab and hyaluronidase-tqjs and the chemotherapy medicines carboplatin and etoposide.
- ZEPZELCA may be used when your lung cancer:
 - has spread to other parts of the body (metastatic), **and**
 - you have received treatment with chemotherapy that contains platinum, and it did not work or is no longer working.

It is not known if ZEPZELCA is safe and effective in children.

Before receiving ZEPZELCA, tell your healthcare provider about all of your medical conditions, including if you:

- have liver or kidney problems.
- are pregnant or plan to become pregnant. ZEPZELCA can harm your unborn baby.

Females who are able to become pregnant:

- Your healthcare provider should do a pregnancy test before you start treatment with ZEPZELCA.
- You should use effective birth control (contraception) during treatment with and for 6 months after your last dose of ZEPZELCA.
- Tell your healthcare provider right away if you become pregnant or think that you are pregnant during treatment with ZEPZELCA.

Males with female partners who are able to become pregnant should use effective birth control during treatment with and for 4 months after your last dose of ZEPZELCA.

- are breastfeeding or plan to breastfeed. It is not known if ZEPZELCA passes into your breastmilk. Do not breastfeed during treatment with ZEPZELCA and for 2 weeks after your last dose of ZEPZELCA. Talk to your healthcare provider about the best way to feed your baby during treatment with ZEPZELCA.

Tell your healthcare provider about all the medicines you take, including prescription and over-the-counter medicines, vitamins, and herbal supplements. Certain other medicines may affect how ZEPZELCA works. Know the medicines you take. Keep a list of them to show your healthcare provider and pharmacist when you get a new medicine.

How will I receive ZEPZELCA?

- ZEPZELCA is given by an intravenous (IV) infusion into a vein over 60 minutes.
- ZEPZELCA is usually given every 21 days.
- Before each treatment with ZEPZELCA, you may receive medicines to help prevent nausea and vomiting or make it less severe.
- Your healthcare provider will decide how long you will continue treatment with ZEPZELCA.
- Your healthcare provider may do certain tests during your treatment with ZEPZELCA to check you for side effects, and to see how well you respond to the treatment.

What should I avoid while using ZEPZELCA?

- Avoid eating or drinking grapefruit, Seville oranges, or products that contain grapefruit juice and Seville oranges during treatment with ZEPZELCA.

What are the possible side effects of ZEPZELCA?

ZEPZELCA can cause serious side effects, including:

- **Low blood cell counts.** Low blood counts including low neutrophil counts (neutropenia) and low platelet counts (thrombocytopenia) are common with ZEPZELCA, and can also be severe. Some people with low white blood cell counts may get fever, or an infection throughout the body (sepsis), that can cause death. Your healthcare provider should do blood tests before you receive each treatment with ZEPZELCA to check your blood cell counts.

Tell your healthcare provider right away if you develop:

- fever or any other signs of infection
- tiredness
- unusual bruising or bleeding
- pale colored skin

- **Liver problems.** Increased liver function tests are common with ZEPZELCA and can also be severe. Your healthcare provider should do blood tests to check your liver function before you start and during treatment with ZEPZELCA.

Tell your healthcare provider right away if you develop symptoms of liver problems including:

- loss of appetite
- nausea or vomiting
- pain on the right side of your stomach-area (abdomen)

- **Skin damage at or near the infusion site.** ZEPZELCA can cause damage and death of tissue cells if it leaks into the tissues around your infusion site. You may need to have surgery to remove any dead tissue. Tell your healthcare provider right away if you see any fluid leaking at or around the catheter during your infusion, or if you notice any redness, swelling, itching or discomfort at the infusion site at any time.

- **Severe muscle problems (rhabdomyolysis).** Treatment with ZEPZELCA may increase the level of an enzyme in your blood called creatine phosphokinase (CPK). Your healthcare provider should do blood tests to check your CPK levels before you start and during treatment with ZEPZELCA. Tell your healthcare provider if you have severe muscle pain or weakness.

Your healthcare provider may temporarily stop treatment, lower your dose, or permanently stop ZEPZELCA if you develop serious side effects during treatment with ZEPZELCA.

The most common side effects of ZEPZELCA given alone include:

- tiredness
- low white and red blood cell counts
- increased kidney function blood test (creatinine)
- increased liver function blood tests
- increased blood sugar (glucose)
- nausea
- decreased appetite
- muscle and joint (musculoskeletal) pain
- low level of albumin in the blood
- constipation
- trouble breathing
- low levels of sodium and magnesium in the blood
- vomiting
- cough
- diarrhea

The most common side effects of ZEPZELCA given with atezolizumab include:

- low white and red blood cell counts
- nausea
- tiredness or weakness

These are not all of the possible side effects of ZEPZELCA. Call your doctor for medical advice about side effects. You may report side effects to FDA at 1-800-FDA-1088.

General information about the safe and effective use of ZEPZELCA.

Medicines are sometimes prescribed for purposes other than those listed in a Patient Information leaflet. If you would like more information, talk with your healthcare provider. You can ask your pharmacist or healthcare provider for information about ZEPZELCA that is written for health professionals.

What are the ingredients in ZEPZELCA?

Active ingredient: lurbinectedin

Inactive ingredients: sucrose, lactic acid and sodium hydroxide.

Distributed by: Jazz Pharmaceuticals, Inc.

Palo Alto, CA 94306

Under license from Pharma Mar, S.A.

ZEPZELCA is a registered trademark of Pharma Mar, S.A.

For more information, go to www.ZEPZELCA.com or call 1-800-520-5568.

This Patient Information has been approved by the U.S. Food and Drug Administration.

Revised: 10/2025