



**KELCHNER**

Oil & Gas Field Services

FAST | RIGHT | SAFE



For more than 60 years,  
Kelchner has been the  
industry leader in  
civil construction.

---

We've grown to become one  
of the **top 20** largest  
civil construction firms  
in the country.\*

\*According to a survey by ENR  
(Engineering News-Record)

***We deliver the fastest,  
most reliable and safest  
work, every time.***

**That's how we define high  
performance, in our everyday  
business, for every project  
we complete.**



# The **KELCHNER** Difference

FAST | **RIGHT** | SAFE

It's **our people** who truly define us. Start to finish, we operate as a team, bringing an unprecedented level of dedication and attention to detail to every project.

Jobs get completed correctly and safely the first time, on time.



# Energy Services

---

Our high-performance culture means hands-on expertise from a leader in the industry.

When it comes to providing a full spectrum of **Oil and Gas Field services**, our commitment and experience are unmatched.



Completed well pad prior to mobilizing the drill rig, December 11th, 2011





# Energy Field Services

---

- Well Pad Construction
- Impoundment Construction
- Soil Stabilization for Well Pads
- Full-Depth Reclamation (FDR)
- Roadway Construction & Maintenance
- Underground Utilities, Drainage & Piping
- Roustabout Services

FAST | RIGHT | SAFE

# Pre- Planning

---

Because of the short durations and often accelerated schedules, pre-planning is crucial.

- Pre-Bid Site Visits
- Pre-Construction Investigation
- Transition
- Communication

FAST | **RIGHT** | SAFE

## Pre- Bid Site Visits

---

- No different than any other civil site, having a good understanding of the proposed scope can not be fully grasped without a visit to the site.
- At this point, it is imperative that the contractor begins to visualize the pad construction and develop a strategy to accomplish this goal Fast, Right, and Safe.
- In most cases, a soils report has not been completed. Contractors must rely on their instincts and experience.

FAST | **RIGHT** | SAFE



# Pre- Construction Topo

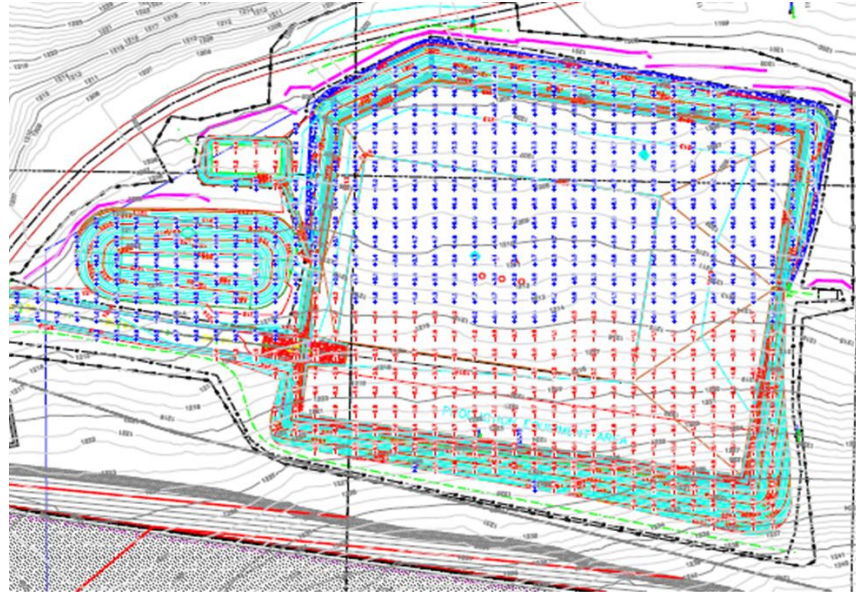
---

- Once a project is awarded, Kelchner takes a physical survey of the site to establish a true existing grade.
- This will eliminate inaccurate data due to old topographic maps or false information produced by aerial topographic survey.
- Kelchner then takes this information and analyzes the difference in per plan existing grade and actual existing grade.
- Once the analysis is complete, quantities are adjusted and that information is passed along to the project manager and the crew.

FAST | **RIGHT** | SAFE

# Pre- Construction Topo

---



FAST | **RIGHT** | SAFE

# Well Pad and Lease Road Construction

---

- Erosion and Sediment Control
- Stripping Topsoil
- Fill and Compaction
- Soil Stabilization
- Finish Work
- *CONSTANT COMMUNICATION*



FAST | **RIGHT** | SAFE

# Lease Roads

---

- Lease roads can make or break a site
- A structurally sound lease road will allow uninterrupted site access during construction, production and completion.
- Well pads are relatively consistent in size and shape.
- The only consistency in a lease road is the width. After that, all bets are off!



FAST | **RIGHT** | SAFE

# Well Pads

---

- Though each well pad is unique, most have a certain amount of similar characteristics.
- Most are rectangular in shape and are relatively flat.
- What is beneath that rectangle is what challenges contractors every day.
  - Rock
  - Mud
  - Sand
  - Water



FAST | **RIGHT** | SAFE



# Well Pads- Rock

---



FAST | **RIGHT** | SAFE

# Well Pads- Mud

---



FAST | **RIGHT** | SAFE

# Well Pads- Water

---



FAST | **RIGHT** | SAFE

# Erosion and Sediment Control

---

- Wetland Protection
- Filter Sock
- Sediment Traps



FAST | **RIGHT** | SAFE



# Stripping Topsoil

---

- Varying depths of topsoil are found on every site
- Some sites have significantly different topsoil depths from one side of the site to the other
- Adaptability and good communication enable us to modify our game plan and adjust to differing site conditions
- Preconstruction investigation (i.e. test pits) aid Kelchner in recognizing unforeseen conditions.



FAST | **RIGHT** | SAFE



# Place Fill and Compaction

---

Literally, the foundation of every well pad. We take this stage very serious!



FAST | **RIGHT** | SAFE

# Pad Completion

---

Finally, a site is stabilized using seed and mulch.



FAST | **RIGHT** | SAFE

# Pad Completion

---

The use of GPS guided equipment allows us to place stone fast and efficient.



FAST | **RIGHT** | SAFE

# Well Pad Stabilization

---

Stabilizing a well pad can provide two primary functions

- Remediation treatment to in situ soils that are producing an undesirable subgrade
- Value Engineering application to strengthen the subgrade to reduce Current Construction Costs as well as Lifecycle Construction Costs.

FAST | **RIGHT** | SAFE



# Well Pad Stabilization

---

Mechanical Modification using shot rock to stabilize a saturated subgrade.

Rig would arrive within 24 hours of this photo being taken.



FAST | **RIGHT** | SAFE



# Well Pad Stabilization

---

In addition to Mechanical Modification, Kelchner also performs Chemical Modification through Lime and Cement Stabilization.

Pictured is a site prior to Cement Stabilization.



FAST | **RIGHT** | SAFE

# Well Pad Stabilization

---

During Stabilization



FAST | **RIGHT** | SAFE

# Well Pad Stabilization

---

After Stabilization



FAST | **RIGHT** | SAFE

# Challenges

---

- Rigs won't wait!
- Sometimes this calls for an accelerated schedule with extended working hours.
- It is our priority to complete well pad FAST, RIGHT, and SAFE
- We will do whatever it takes to simultaneously achieve all three.

FAST | **RIGHT** | SAFE

# Challenges – Added Resources

---

Kelchner will often add additional resources on a project to meet or exceed the client's schedule.



FAST | **RIGHT** | SAFE

## Challenges – Added Shifts

---

When a site can not support additional resources, extended working hours might be appropriate.



FAST | **RIGHT** | SAFE



# **We think safe – *therefore we work safe.***

---

Safety is more than a promise – it's our way of life:

- Ongoing education programs
- Mandatory training sessions
- On-site implementation

It's simple. A productive, cost-efficient project is a 100% safe project.

---

**Safety – it's our highest priority and our most valuable asset.**




Collect. Verify. Connect.

DALLAS CALGARY SYDNEY LONDON LOS ANGELES NEW YORK

# Committed to communication – *from start to finish.*

---

Constant, comprehensive communication throughout any project – clients are consistently updated on the work we are performing.

- 
- **Entire Chain** – Conversations both up and down the line across the entire project hierarchy
  - **Standard Procedure** – Ongoing, thorough communication is standard procedure
  - **Weekly Updates** – Written updates provided weekly by our Project Management staff

“ Contractor and employees are committed to producing a quality product in an efficient manner with safety being first and foremost... performs above and beyond their scope... always responsive.

**Contractor is extremely reliable...  
a valuable asset to the site.** ”

FAST | RIGHT | SAFE

---

That's our promise.

Recent Contractor review: 3.99 out of 4

Kelchner was ranked **No. 1** of **300+** contractors performing work on this \$2B+ project for **four straight quarterly reviews.**

# **KELCHNER**





**KELCHNER**

**Headquarters:**

Springboro, OH

---

**Regional Offices:**

Carrollton, OH, Alva, OK  
& Clarkesville, TN